

BIXOLON 3inch Thermal Printer

SRP-350II Product Guide



Aug. 2010

Introduction

SRP-350II only takes strong points of BIXOLON 350 Series.



SRP-350II is a successor of the best selling model SRP-350. BIXOLON SRP-350II is a 3inch thermal receipt printer to provide all you need.

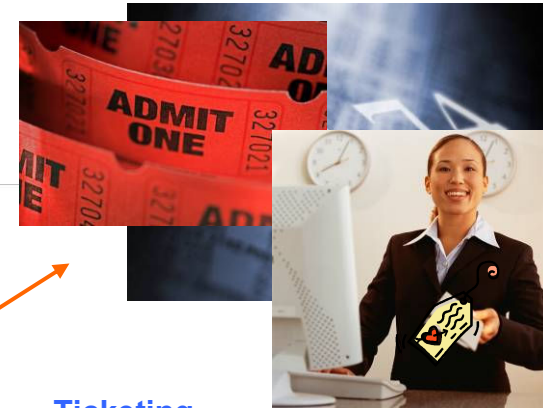
The biggest benefit from SRP-350II is improved printing speed. Not only **Text printing speed**, but also **Image printing speed became up to 200mm/sec**. Smart Windows driver and other various drivers make BIXOLON SRP-350II thermal receipt printer even more attractive and special. Quicker speed and better reliability, you can expect from a leading manufacturer.

The SRP-350II thermal receipt printer offers simplicity for operator with Easy-paper-loading and ease of USB 2.0 connectivity with interchangeable interfaces and industry standard drivers. The modern design and small footprint enhance any environment.

SRP-350II Applications to



Retail
-Coupon and Receipt printing



Ticketing
-Automatic ticketing, Parking ticketing



Hospitality
-Pubs, Restaurant, Accommodation service receipt printing



Lottery
-Kiosk ticket printing, Barcode printing

Product Overview

1. Saving your precious TIME!

Image printing speed **200mm/sec**

2. Better reliability

3. USB 2.0

4. Smart Windows / Mac Driver support

5. SRP-350II PSP (POS Software Package)

6. VMSSM (Virtual Memory Switch Manager)

SRP-350II Hardware Highlights

1. Save your Valuable TIME everyday.

200mm/sec Image Printing Speed !

100% Faster than BIXOLON previous model SRP-350.

			SRP-350	SRP-350II
Speed	180dpi	Image	100mm/sec	200mm/sec
		Text	150mm/sec	200mm/sec



Refer to page12 for specification.

2. Confidence in its Reliability, SRP-350II

	SRP-350	SRP-350II
Printer Unit	37 million lines	70 million lines
Auto-cutter	1.5 million lines	1.8 million lines

3. USB 2.0 High speed (480Mbps) UPGRADED!



Refer to page12 for specification.

BIXOLON Software Highlights

1. **SRP-350II PSP (POS Software Package)** Launcher Available

1) Intelligent Interface Auto-installer

*Automatic searching for Serial/Parallel/USB and Ethernet

Step 1 : Port Setting Method Port Setting Wizard 1.0

- Select the printer model

SRP-350II

- Select the port setting option.

- ☒ Serial/Parallel/USB Auto Search and Configuration
- ☐ Wired Ethernet Auto Search and Configuration
- ☐ Manual Select and Configuration
- ☐ Default Configuration

* Selecting Default Configuration will skip Step 2.

Back Next Exit

Copyright(c) 2008 BIXOLON CO., LTD. All Rights Reserved.

Step 2 : Auto Search Select Port Setting Wizard 1.0

Serial / Parallel / USB Auto Port Searching...

Port Searching Range

- Serial : COM1~COM9
- Parallel : LPT1~LPT4
- USB : Pnp

** Caution : Bit length, parity, stop bit and flow control in serial are set to default.
(Bit length:8, parity:none, stop bit:1, flow control:DTR/DSR)

Searching for ports could take up to 1 minute.

Search Status : Port Searching Complete!

Search Result

Port: USB <-> SRP-350II

Back Next Exit

Copyright(c) 2008 BIXOLON CO., LTD. All Rights Reserved.

Step 3 : Port Setting Verification Port Setting Wizard 1.0

Port Information Verify

Current Selected Port information

Port : USB

Baudrate : 0

Selected Printer : SRP-350II

Test Print

Based on current port information, Driver will be installed with the provided port setting.

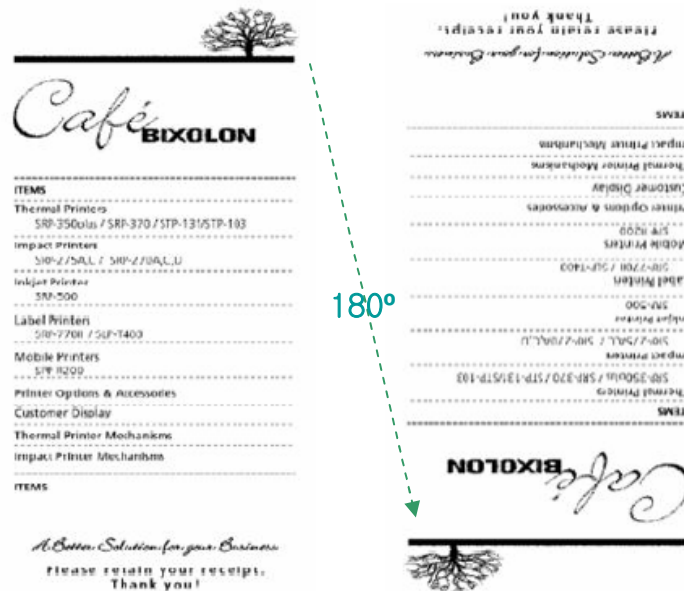
Click the "Next" button to install the windows driver

Back Next Exit

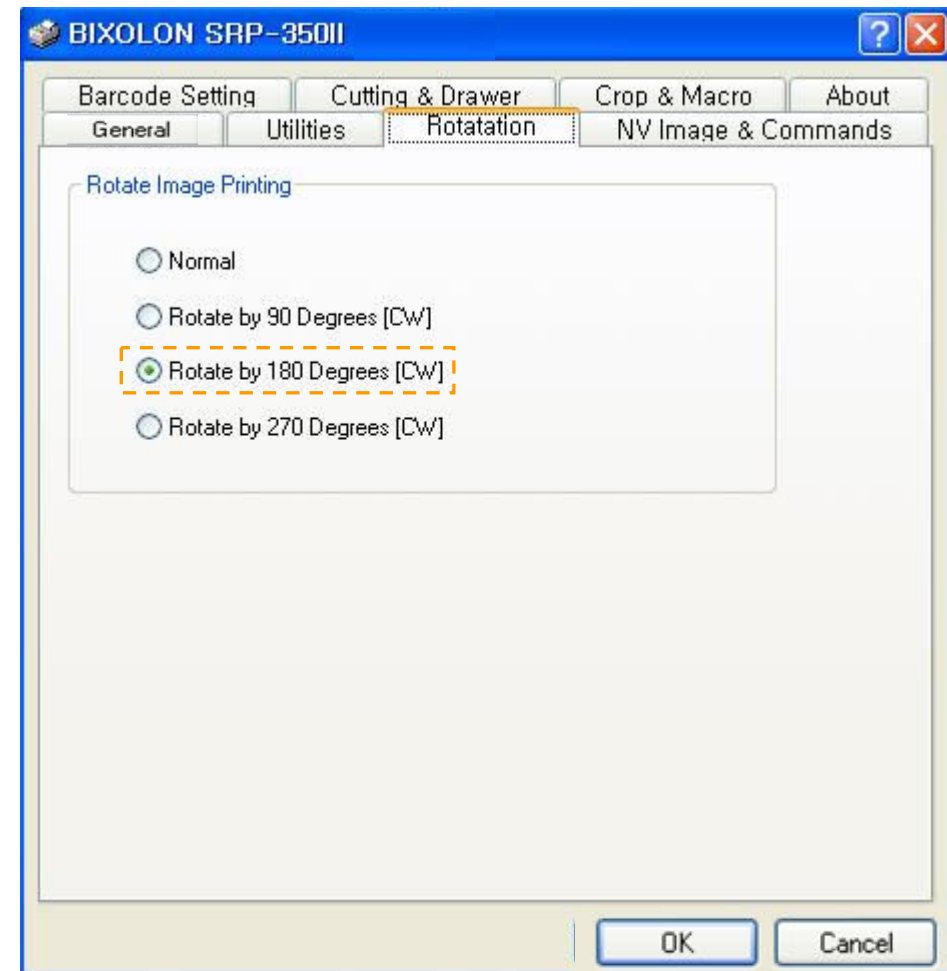
Copyright(c) 2008 BIXOLON CO., LTD. All Rights Reserved.

2. Windows Driver

1) Reverse Printing (Rotation)

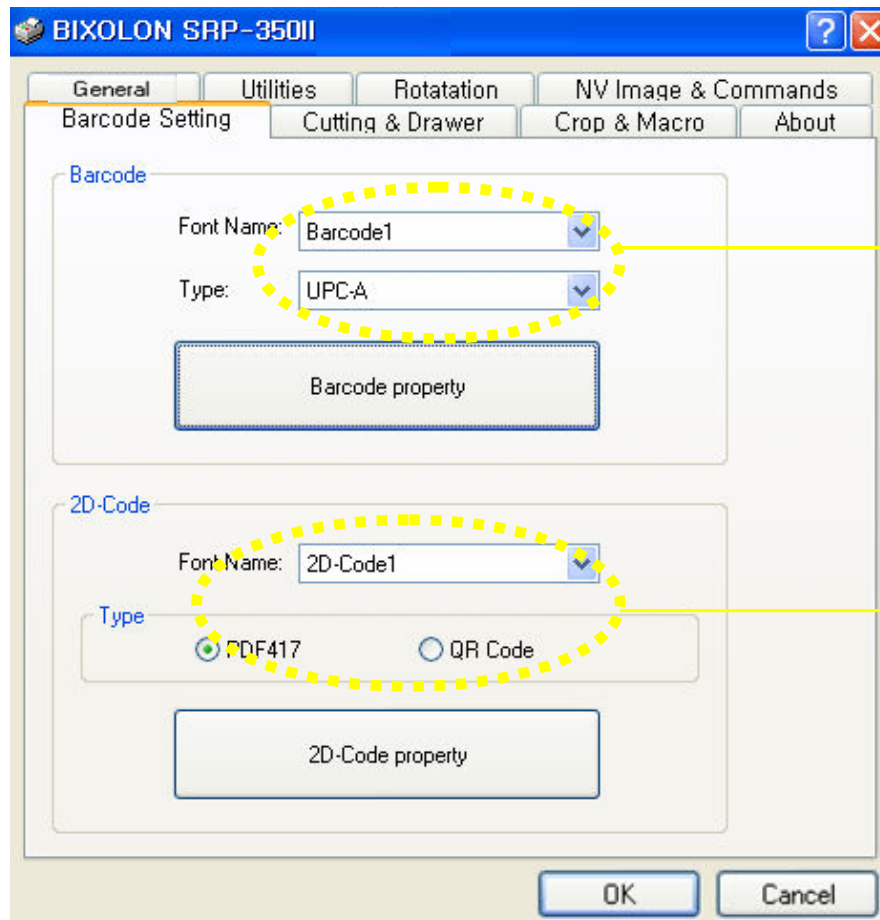


<Rotate by 180 Degrees>



2. Windows Driver

2) Barcode Setting



1D: EAN-13,EAN-8,Code39,Code93,
Code128,ITF,Coda Bar,
UPC-A,UPC-E

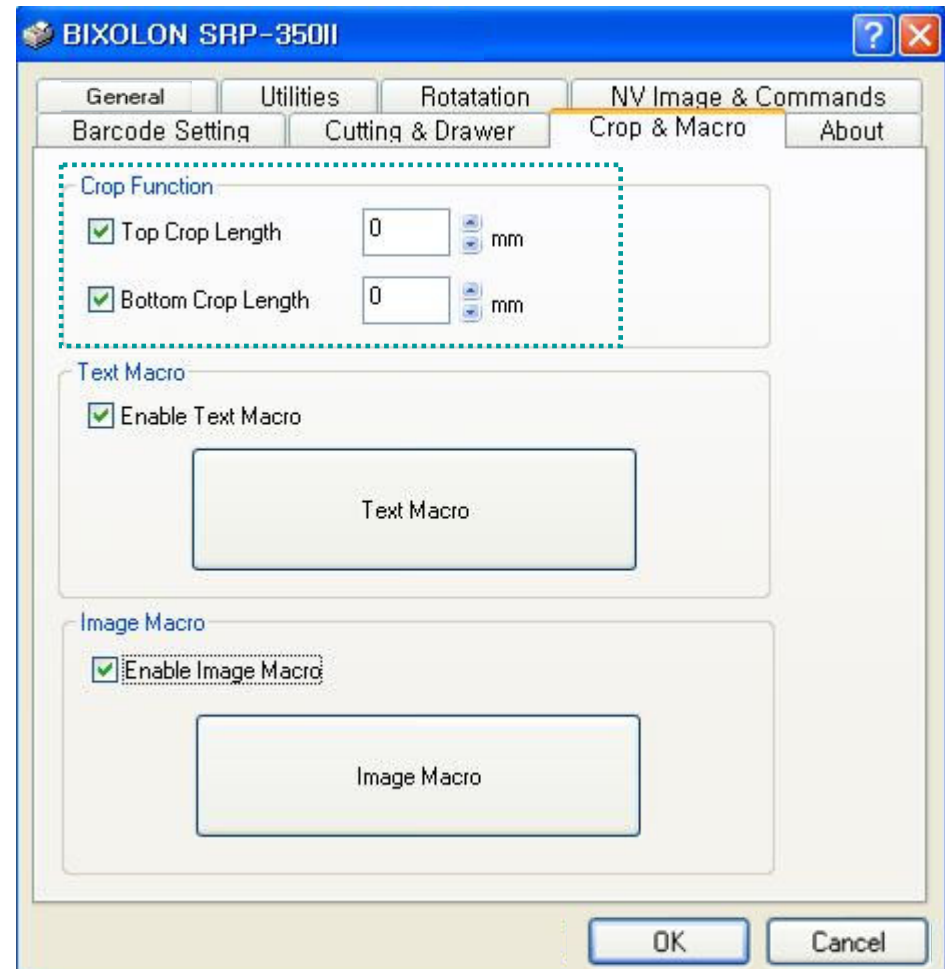
2D: PDF417,QR Code

2. Windows Driver

3) Margin Crop (Paper saving function)



Save your Paper and the Earth !

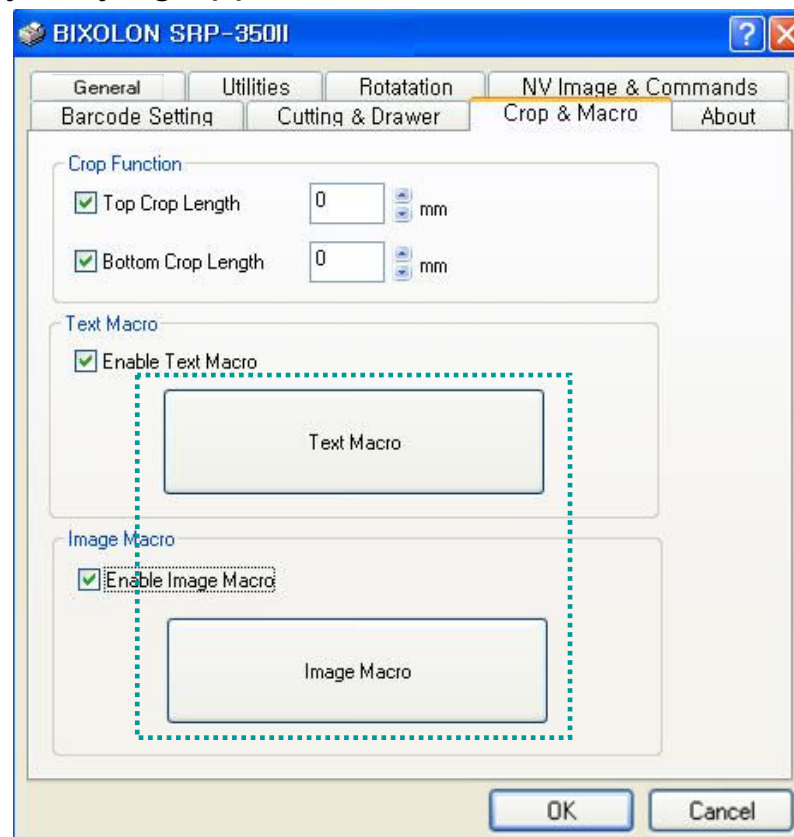


2. Windows Driver

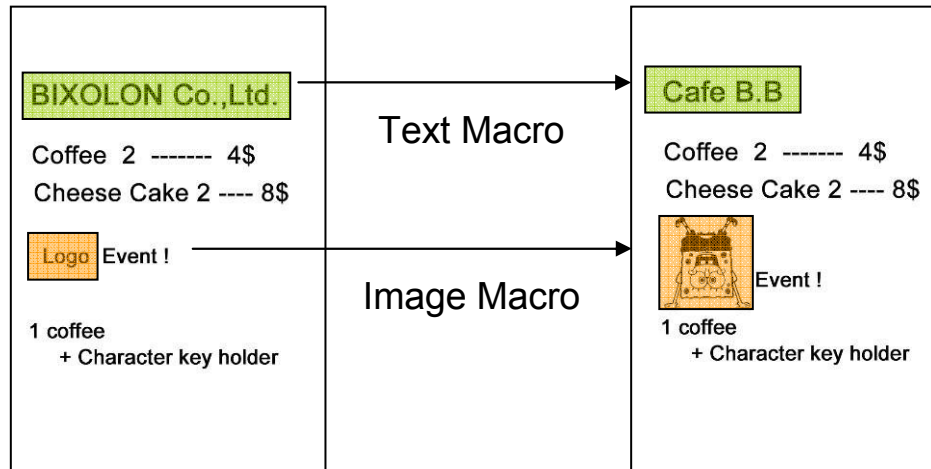
4) Text & Image Macro

Simply convert certain words.

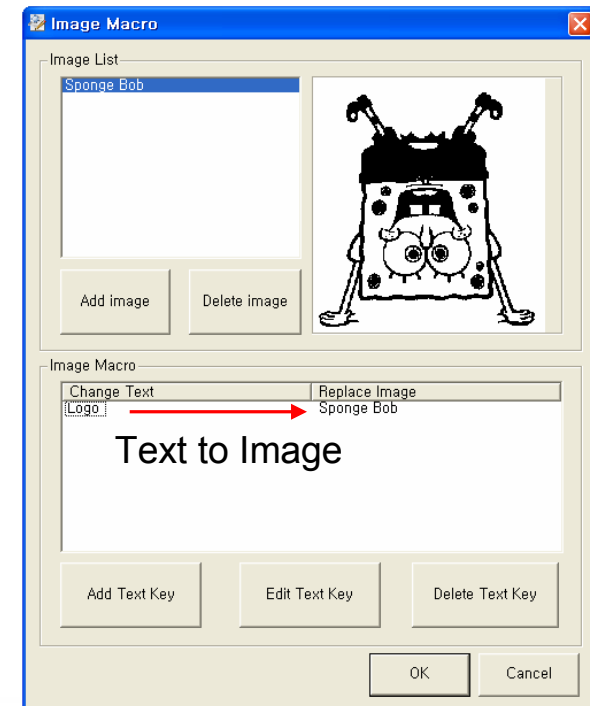
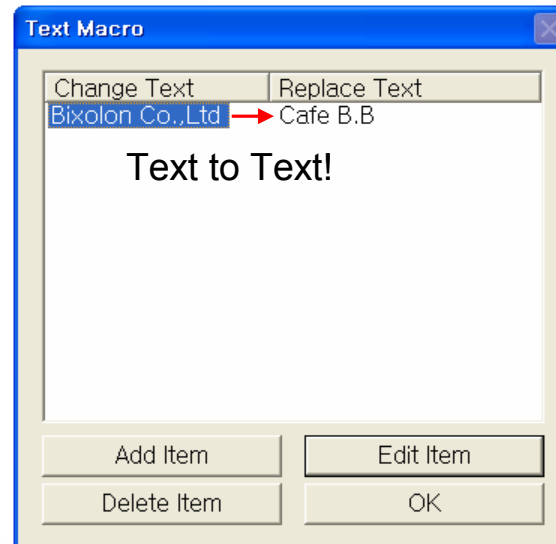
Satisfy all constantly varying applications.



4) Text & Image Macro



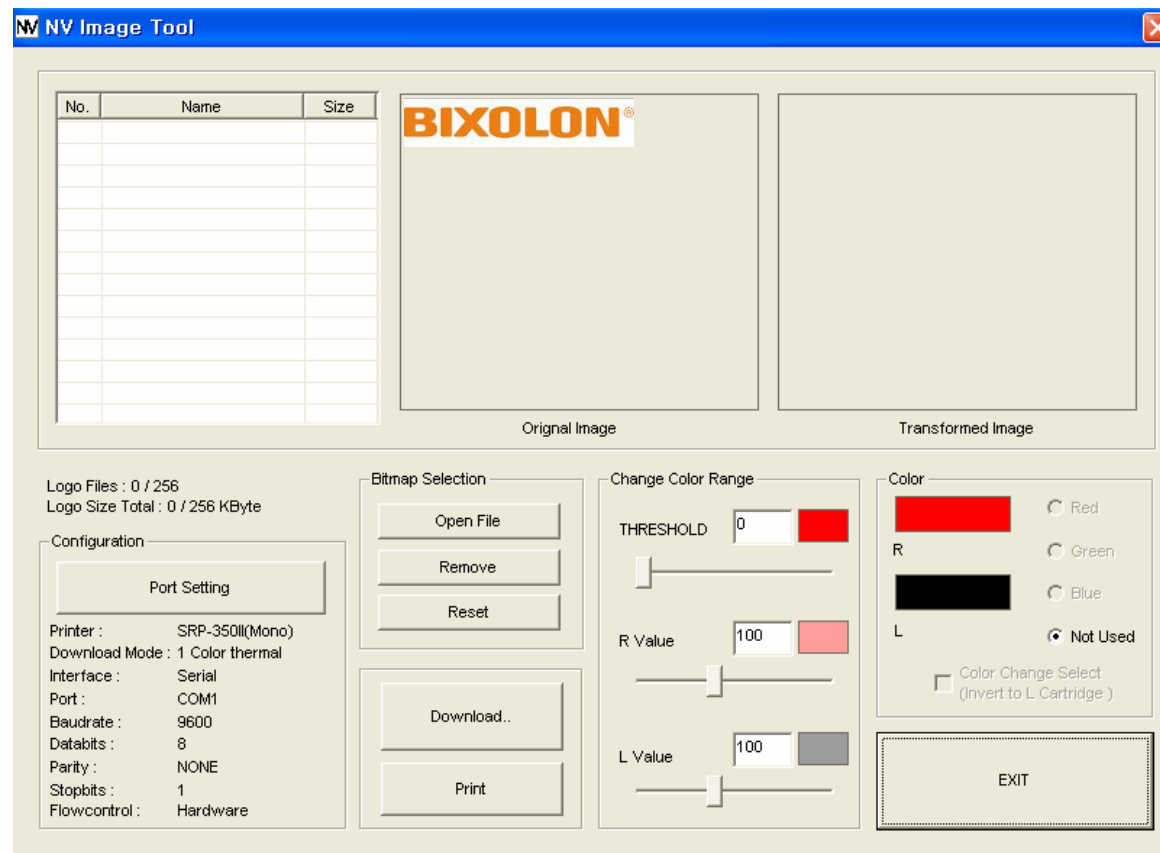
To meet your taste !



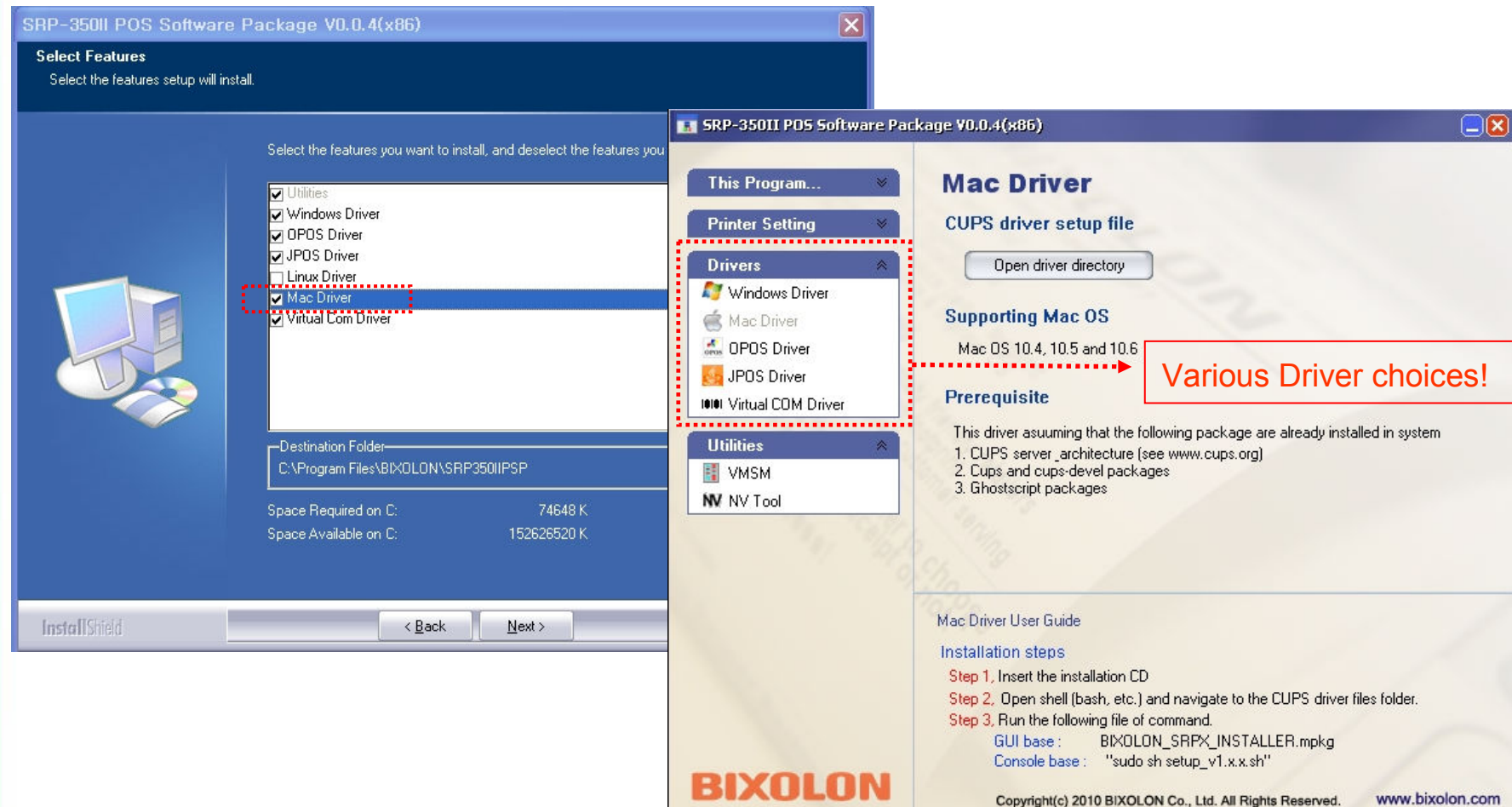
2. Windows Driver

5) NV Image management

Exposure your company Logo & Customized image often and easily!



3. Mac Driver (Mac OS X V10.4, 10.5, 10.6) Support!



4. **VMSM (Virtual Memory Switch Manager) Available**

1) Run Manager and Command Test Editor

Setting a printer with BIXOLON Software effectively.

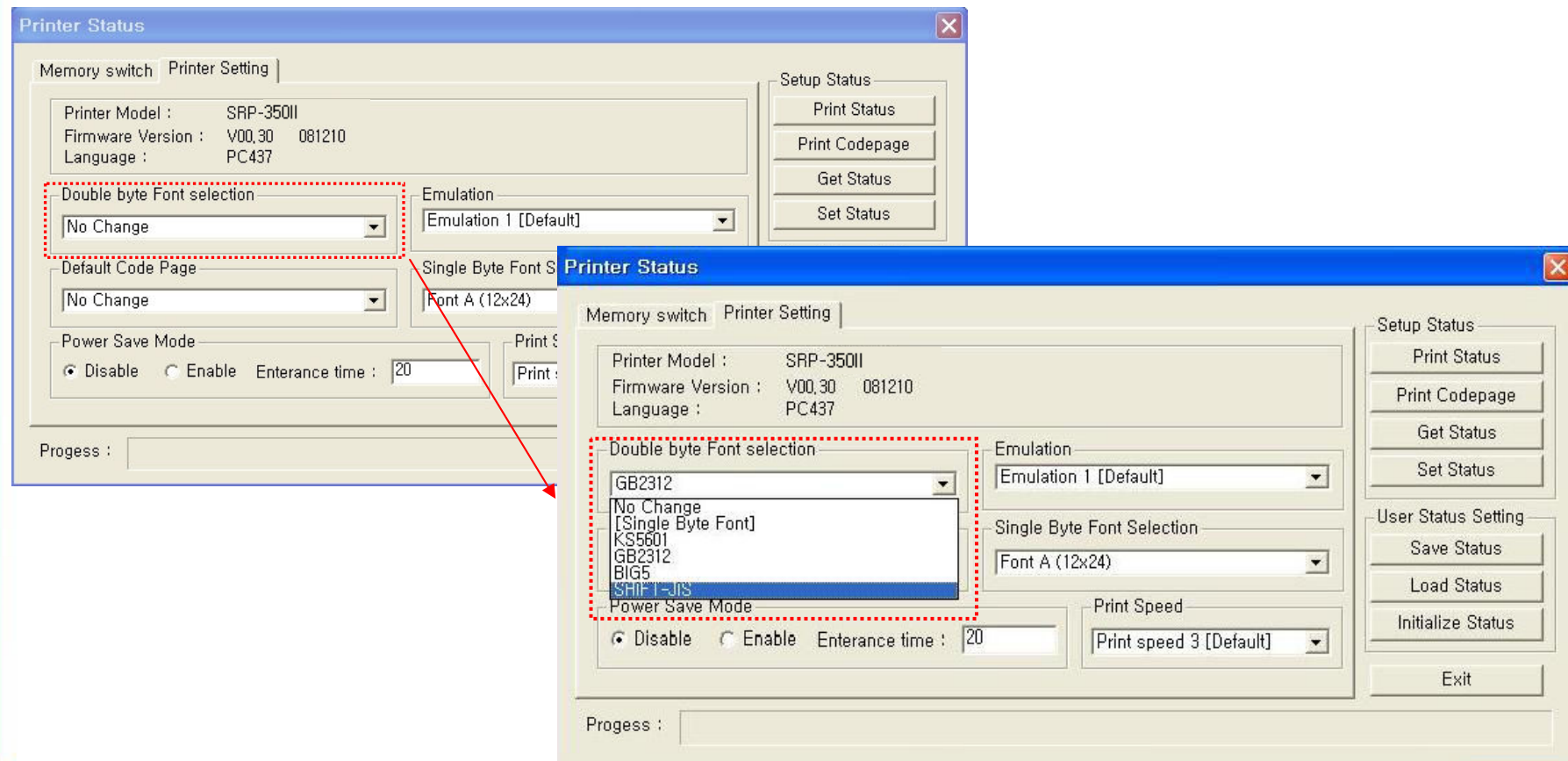
- Code page
- Emulation
- Print speed

The screenshot shows the 'Printer Status' window with the 'Printer Setting' tab selected. The window is divided into several sections. On the left, under 'Memory switch', there are fields for 'Printer Model : SRP-350II', 'Firmware Version : V00.30 081210', and 'Language : PC437'. Below these are two dropdown menus: 'Double byte Font selection' (set to 'No Change') and 'Default Code Page' (set to 'No Change'). The 'Default Code Page' dropdown is highlighted with a red dashed border. To the right of these are two more dropdown menus: 'Emulation' (set to 'Emulation 1 [Default]') and 'Single Byte Font Selection' (set to 'Font A (12x24)'). Below the 'Double byte Font selection' dropdown is a 'Power Save Mode' section with radio buttons for 'Disable' (selected) and 'Enable', and a text field for 'Entrance time : 20'. To the right of this is a 'Print Speed' dropdown menu set to 'Print speed 3 [Default]', which is also highlighted with a red dashed border. On the far right, there is a 'Setup Status' section with buttons for 'Print Status', 'Print Codepage', 'Get Status', and 'Set Status'. Below that is a 'User Status Setting' section with buttons for 'Save Status', 'Load Status', and 'Initialize Status'. At the bottom right is an 'Exit' button. At the bottom left, there is a 'Progress :' label followed by a progress bar.

4. **VMSM (Virtual Memory Switch Manager) Available**

2) **Double byte Font support!**

KS5601/GB2312/BIG5/SHIFT-JIS



Options & Accessories

1. SMPS Built-in Cover

-You can save the space and prevent the SMPS from liquid by using it.



RSB-350

2. Wall Mount

-Wall Mount is to install a printer on the wall to avoid the tight counter space.



RWM-350

3. Splash Proof Cover

-Splash Cover is to prevent liquids and dust



RSC-350

4. BIXOLON Melodist

-BIXOLON Melodist alarm the information to the noisy places.



RMB-100

5. Vertical Stand

-Vertical Stand with high space efficiency.



RVS-350

*SRP-350 Series Interface Card Compatibility.

Model	Serial	Parallel	USB	Ethernet
SRP-350	IFA-S	IFA-P	IFA-U	IFA-EP
SRP-350II	IFA-S	IFG-P	IFG-U	IFA-EP
SRP-350plus	IFA-S	IFG-P	N/A	IFA-EP
SRP-350plusII	IFA-S	IFG-P	N/A	IFA-EP

SRP-350plus ↔ SRP-350II ↔ SRP-350plusII



We are always pleased to have your interests and any other inquires.

sales@bixolon.com