



**Better performance and  
More versatility**

# SLP-D420

*The new label printer, SLP-D420 is a direct thermal label printer, a succeeding model of SRP-770II that was highly successful in the market, and the performance of this desktop label printer has been much improved. The printing speed is 6 inches per second, triple on-board interfaces including Serial+Parallel+USB are provided as standard features, vector fonts are supported with the upgraded firmware, and it includes the advantage of automatic recognition of programming languages such as SLCS, EPL II, and ZPL II for greater compatibility with the products of other companies. Additionally, users can design custom labels with the label design programs that comes with the printer without additional costs which was developed by BIXOLON's in-house technology. A function to save power has been added to the SLP-D420, and the product can save operating costs of the users and it is an environment-friendly product built to protect nature.*

## HIGHLIGHTS

- Enhanced Hardware
  - Faster printing speed (6 inches per second)
  - Triple interface on board standard
  - High resolution of printing (Optional 300 dpi)
  - Larger memory capacity (4MB flash & 8MB SDRAM)
- Upgraded Firmware
  - Vector font supported (Scalable font)
  - Multiple programming languages recognized automatically (SLCS, EPLII, ZPLII)
  - 23 Code pages supported (standard firmware)
- User Friendly Software
  - Windows barcode font supported
  - Label design software program included
- Environmental Eco Friendly Features
  - Lower power consumption
  - Power save mode
- Value Added Features
  - Wide range of media roll supported
  - Intelligent leap-over™ \*
  - External paper supplier for bigger roll size available (Option)
  - Heavy duty auto cutter available

*\* Intelligent leap-over™: Detects empty label and automatically leaps to the next label*



SLP-D420  
(Standard Type)

SLP-D420D  
(Peeler Type)

SLP-D420C  
(Auto-cutter Type)



## PRODUCT FEATURES

### Convenient connectivity in an all-in one interface

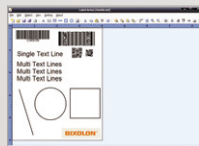
The SLP-D420 features an advanced controller board, all-in-one triple interface card, compact design, sleek appearance, fast printing of up to 6 inches per second, higher output capacity with 4MB flash memory and 8MB SDRAM for greater printing performance.



Standard all-in-one : Serial+Parallel+USB  
Optional all-in-one : Serial+Ethernet+USB

### User friendly software program

Enhance efficiency and control with BIXOLON'S label creator and barcode design software. A powerful Windows Driver, Z-Driver and Unified label printer utility program are included to deliver additional performance.



### Multiple programming languages supported

Standard firmware supports the popular emulations and recognizes ZPLII, ELP II and SLCS programming languages.

### Easy label roll replacement

The SLP-D420 can be used by 200mm media roll with external paper supplier.

A user friendly design ensures efficient loading for proper alignment and supports labels from 6mm in height to as small as 25mm in width and a maximum width of 116mm



Media roll holder



External paper supplier

### Value added features

- Wide range of media roll (minimum label height 6mm)
- Intelligent leap-over™ \*
- External paper supplier and peeler (Option)

\* Intelligent leap-over™ : Detects empty label and automatically leaps to the next label



Intelligent leap-over™

## SPECIFICATIONS

### PRINT

- PRINTING METHOD : Direct thermal
- PRINTING SPEED : 6 inches per second (152mm per second)
- RESOLUTION : 203 dpi(standard), SLP-D423 : 300 dpi(optional)
- CHARACTER SIZE(WXH) :  
0 (09 X 15), 1 (12 X 20), 2 (16 X 25), 3 (19 X 30), 4 (24 X 38),  
5 (32 X 50), 6 (48 X 76), 7 (22 X 34), 8 (28 X 44), 9 (37 X 58),  
Korean a 16 X 16 (ASCII: 9 X 15), Korean b 24 X 24(ASCII:16 X 25),  
Korean c 20 X 20(ASCII:12 X 20), Korean d 26 X 26(ASCII:16 X 30),  
Korean e 20 X 26(ASCII:16 X 30), Chinese (24 X 24)
- CHARACTER SET : Alphanumeric Character : 95  
Extended Character : 128 X 23 pages  
International Character : 32  
Resident bitmap Fonts : 10, True Type Font
- BARCODES :  
1D : EAN-8, EAN-13, Code39, Code93, Code128, I 2 of 5, ITF,  
Coda Bar, UPC-A, UPC-E, IMB  
2D : PDF417, QR Code, MaxiCode, Data Matrix

### PAPER

- WIDTH : 25~116mm
- PAPER ROLL DIAMETER : ID-25.4~38.1mm/OD-Max.130mm
- SUPPLY METHOD : Easy Paper Loading

### RELIABILITY

- PRINTER UNIT : 20 million lines
- HEAD : 50 Km
- AUTO CUTTER(Optional) : 0.3 million cuts

**INTERFACE** : RS232C, IEEE1284, USB, Ethernet(internal/external)

**RECEIVE BUFFER** : 256 Kbytes

**NV IMAGE** : 64 Kbytes

**EMULATION** : SLCS, EPL II, ZPL II

**DRIVER** : Windows Driver, Z Driver(zoom)

**SENSOR** : Transmissive sensor, Reflective sensor, Head Open sensor

**POWER SUPPLY (SMPS)** : AC 100~240V / DC 24V, 2.92A

**DIMENSIONS** : 194 X 243 X 171 (W X L X H mm)

**OPERATING TEMPERATURE** : 0 ~ 45°C

\*SLCS : BIXOLON SAMSUNG Language Command Set

**BIXOLON®** www.bixolon.com

This publication contains product descriptions without obligation.  
All features and specifications are subject to change without notice. September 2010

#### BIXOLON Headquarters

Address #A-5F, Digital Empire Building, 980-3,  
Yeongtong-dong, Yeongtong-gu, Suwon-si,  
Gyeonggi-do, 443-702, Korea  
Tel +82 (0) 31 218 5500 Fax +82 (0) 31 218 5589  
E-mail sales@bixolon.com

#### BIXOLON America Inc.

Address 3171 Fujita St Torrance,  
CA 90505  
Tel +1 858 764 4580 Fax +1 310 257 6869  
E-mail sales@bixolonusa.com

#### BIXOLON Europe GmbH

Address Tiefenbroicher Weg 35,  
40472 Düsseldorf  
Tel +49 211 68 78 54 0 Fax +49 211 68 78 54 20  
E-mail sales@bixolon.de

#### BIXOLON Dongguan

Address #5 Luyi 2 Road, Tangxia Town,  
Dongguan City, Guangdong Province, P.R.China  
Tel +86 769 8262 0704 Fax +86 769 8262 0703  
E-mail sales@bixolon.com