

Empower the Bar Code

Quick Guide for Backup_Restore Utility.exe

PT-60 / PT-61 / PT-90 Series Mobile Computer

DOC NO. UM-PT805-05

Feb. 2011

Version 1.01

TABLE OF CONTENTS

1. INTRODUCTION	2
1.1 WARNING MESSAGE	3
2. APPLICATION ENVIRONMENT	4
3. EXECUTING BACK UP	6
4. EXECUTING RESTORE	9

1. Introduction

It is necessary to have power supplied to the memory module (namely, Random Access Memory, RAM) to maintain all data and settings stored in it. When the power of a Windows CE based equipment fails, normally, all data and configuration settings, per explained above, will be lost. Then, when the power is back on, the equipment will execute “cold-boot” to bring the equipment back to default status.

To help Windows CE equipment (namely, Argox mobile computers) users sustaining important application related data files and configuration settings, **Backup_Restore Utility** was developed.

Backup_Restore Utility is an easy to use and simple software utility. It can, when needed, backup and restore critical information like register key of this Windows CE equipment and data files (only file types which can be duplicated) stored in this Windows CE equipment. Also, version ID of **Backup_Restore Utility** will be displayed at the right bottom corner of the main screen.

Backup_Restore Utility can establish or restore back up data files in the following locations of this Windows CE equipment :

1. PT-60/61 Series Mobile Computer :

- Flash Disk – File folders in Flash ROM of this equipment
- SD_MMC – SD card as extension memory of this equipment

2. PT-90 Series Mobile Computer :

- User Application – File folders in Flash ROM of this equipment
- Storage Card – SD card as extension memory of this equipment

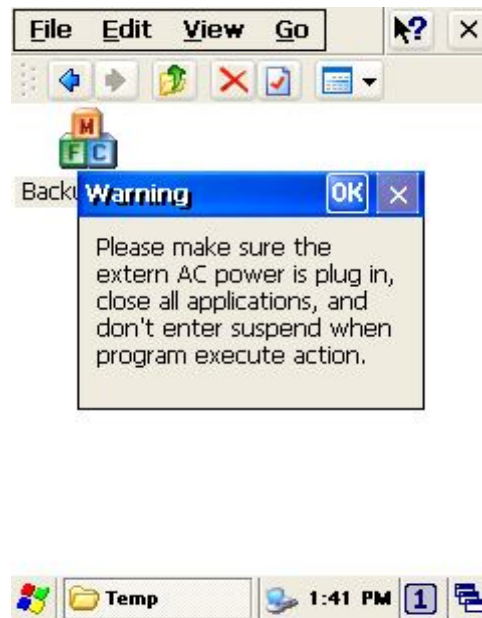
Backup_Restore Utility can back up or restore the following two types of data files :

- File System – All file folders and data files except Flash Disk 、 User Application 、 SD card
- Registry – Windows CE register key in the system

Backup_Restore Utility can select Run INI item, after executing restore and warm-boot, the system will retrieve data (i.e. “os.ini” 、 “scan.ini” and “wlan.ini”) from specified file folders to configure the mobile computer accordingly.

1. 1 Warning Message

A warning message window will be prompt when double-clicking [*Backup_Restore Utility.exe*](#) to open this utility. Please refer to the picture below for details.



Warning Message Window

This warning message reminds user to:

1. Plug in external AC power supply;
2. Close all other application windows;
3. Do not enter "suspend mode" when application program is being executed.

Then, when this warning message window been acknowledged (select "OK") and closed, main screen of [*Backup_Restore Utility.exe*](#) will be opened.

2. Application Environment

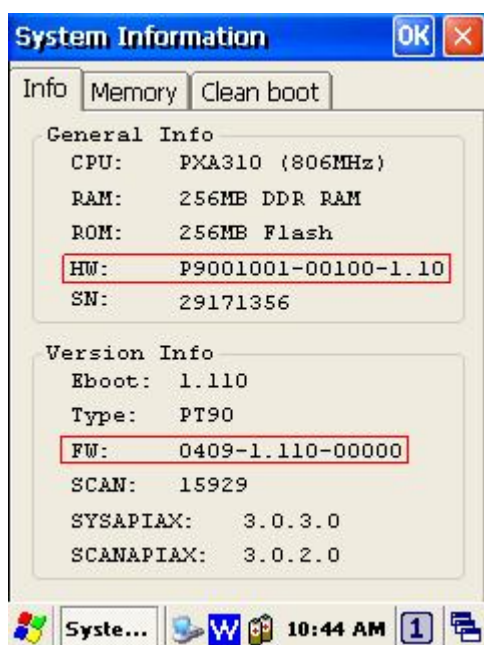
Argox mobile computers, i.e. PT-90 series, PT-60/61 series, can all be supported by **Backup_Restore Utility**. Differentiated by hardware and language versions, restore can not be processed if the hardware or language version is different.

When **Backup_Restore Utility** is used on older version PT-60 series mobile computers, after executing restore and warm-boot, the system will retrieve data (i.e. “os.ini” and “scan.ini”) compulsorily from specified file folders to configure the mobile computer accordingly.

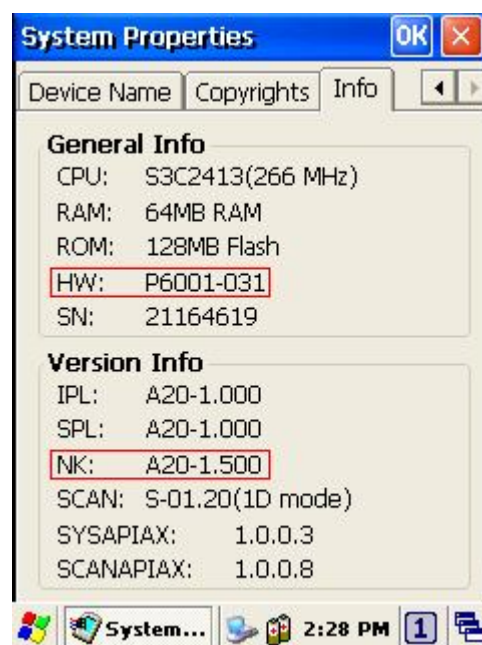
On the other hand, if **Backup_Restore Utility** is used on new version mobile computers, the configuration settings will be initiated normally.

The following table gives clear version indications to identify if the target mobile computer is categorized as new version.

Products	HW Version	NK (FW) Version
PT60	P6001-00x ~ P6001-03x	Axx-1.20x (or beyond)
PT61	P6001-04x ~ P6001-06x	Axx-1.00x (or beyond)
PT90	P90010xx-xxxx-x.xx	xxxx-1.11x-xxxxx (or beyond)



PT90 Terminal Information Window



PT60 Terminal Information Window

Backup_Restore Utility can retrieve data to configure after executing restore and warm-boot.

But, user must complete the following action before executing warm-boot :

1. PT-60/61 Series Mobile Computer :

- Move “os.ini” 、 “scan.ini” and “wlan.ini” to Flash Disk folder (Not need all)

2. PT-90 Series Mobile Computer :

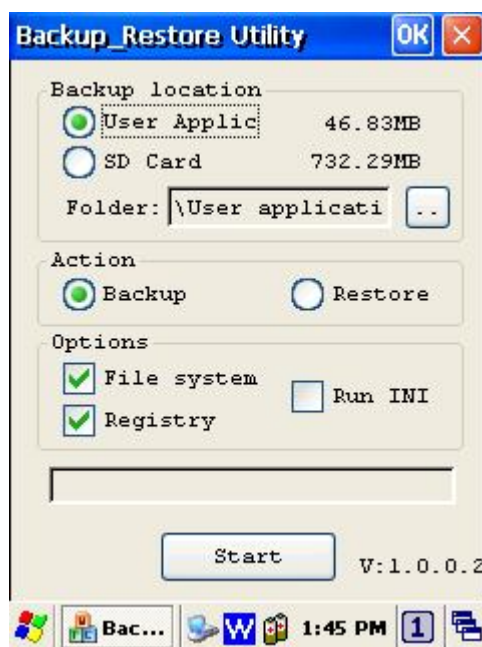
- Move “os.ini” 、 “scan.ini” and “wlan.ini” to User Application folder (Not need all)
- Move “AutoSetup.exe” to User Application folder

”AutoSetup.exe” only PT-90/9230 Series do apply, version 3.0.0.3 or beyond, the configuration settings will be initiated normally.

If active profile is specified, the setting for that profile will active when device startup. In this situation, the “wlan.ini” setting file will be ignored. The active profile setting may include performance setting.

3. Executing Back Up


After entering **Backup_Restore Utility** main screen, back up settings will be made via the screen as below :




Back Up Setting Screen Display

User can select the following different location to establish back up file folder :

1. PT-60/61 Series Mobile Computer :

- Flash Disk – using internal Flash Disk file folder
- SD_MMC – using external optional SD card
-  -- selecting one specific file holder from Flash Disk or SD card

2. PT-90 Series Mobile Computer :

- User Application – using internal User Application file folder
- Storage Card – using external optional SD card
-  -- selecting one specific file holder from User Application or SD card

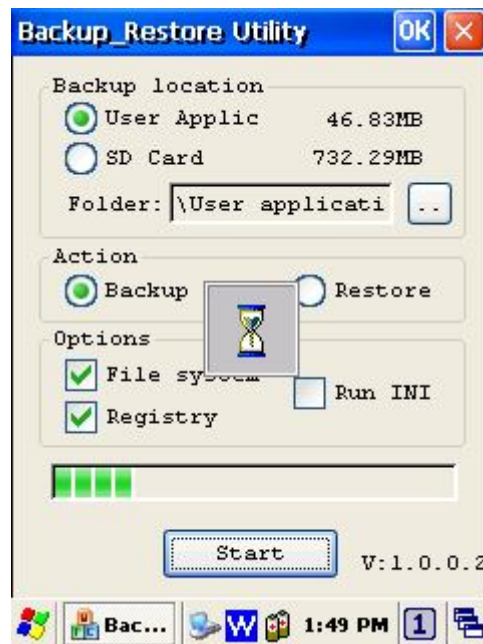
As **Backup_Restore Utility** will back up all file folders and data files in the mobile computer excluding Flash Disk, User Applications, SD card.

Due to only limited file types can be duplicated and stored (please refer to Section 1), therefore, the actual back up file size will be smaller than the total data file size.

If user changes the back up file holder location selection, the execution path will be changed as well. This design gives the convenience to the user so the user will always know the back up file location. Also, user can select if File System or Registry (or both) needs to be duplicated and stored. However, at least one of these two types (File System or Registry) needs to be selected to continue the back up process.

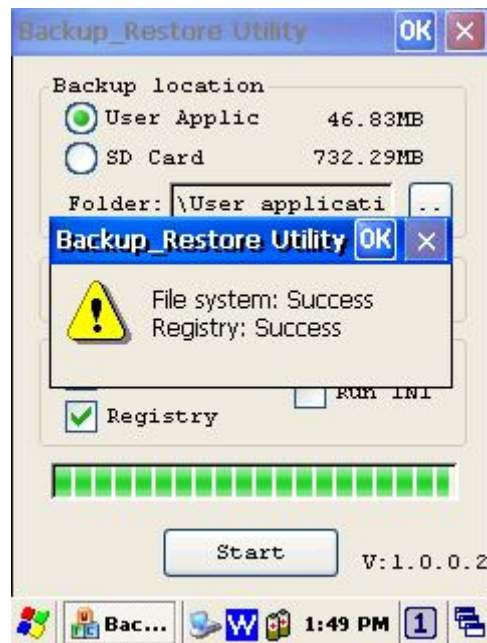
User can select Run INI, after executing restore and warm-boot, the system will retrieve data (i.e. “os.ini”、 “scan.ini” and “wlan.ini”) from specified file folders to configure the mobile computer accordingly. But, don’t only select Run INI item, Run INI must match Registry.

After clicking on the “Start” button, back up process will be started and the green bar will indicate the progress accordingly.



Back Up Screen Display

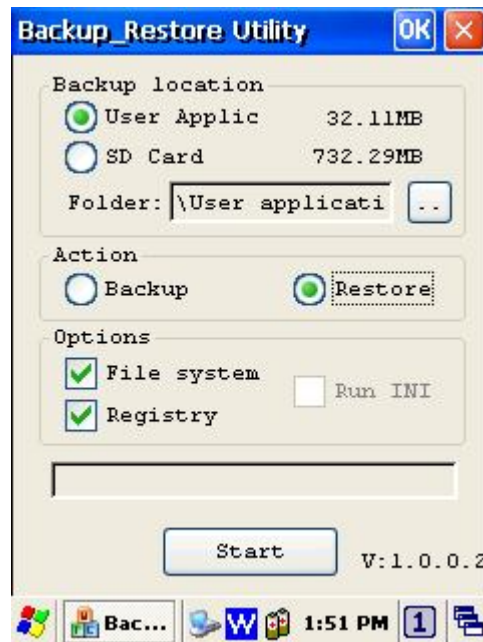
When the back up process is completed, a message window as shown below will be popped up indicating if the process is successful or failed.



Back Up Complete Message Screen

4. Executing Restore


After entering **Backup_Restore Utility** main screen, restore settings will be made via the screen as below :




Restore Setting Screen Display

User can select the following different folder to restore file :

1. PT-60/61 Series Mobile Computer :

- Flash Disk – using internal Flash Disk file folder
- SD_MMC – using external optional SD card
-  -- selecting one specific file folder from Flash Disk or SD card

2. PT-90 Series Mobile Computer :

- User Application – using internal User Application file folder
- Storage Card – using external optional SD card
-  -- selecting one specific file holder from User Application or SD card

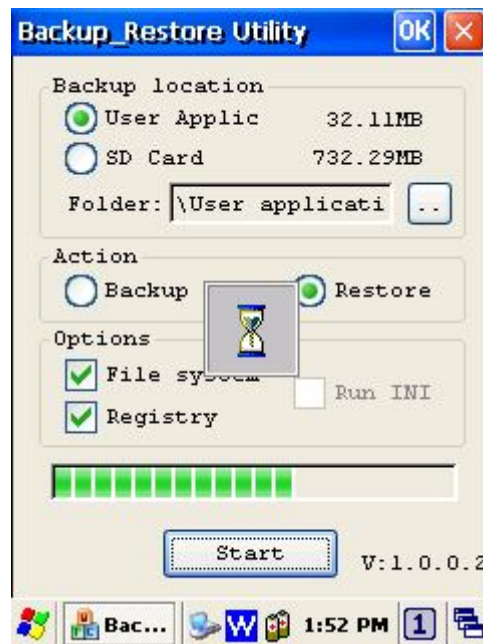
If user changes the restore file folder location selection, the execution path will be changed as well. This design gives the convenience to the user so the user will always know the restore file location. Also, user can select if File System or Registry (or both) needs to be restored. However, at least one of these two types (File System or Registry) needs to be selected to continue the restore process.

User can't select Run INI, the Run INI item decides for back up file folder.

After clicking on the “Start” button, restore process will be started and the green bar will indicate the progress accordingly.

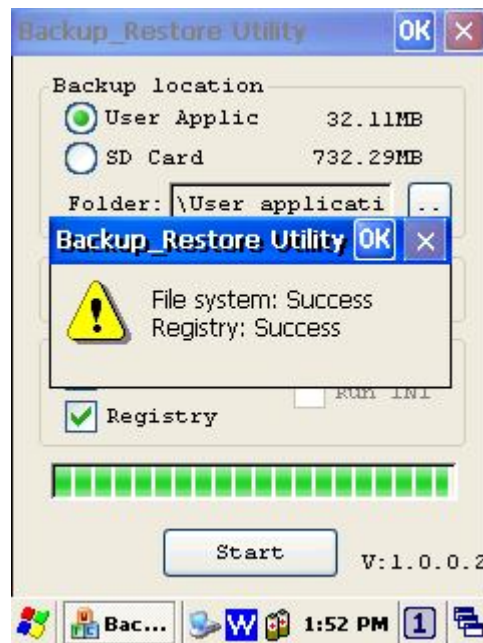
Before restore process been executed, **Backup_Restore Utility** will check the hardware and language version. If any of these two versions is found not match, the restore process will be terminated.

If Run INI item is true and equipment is PT-90 Series, **Backup_Restore Utility** will check “AutoSetup.exe” in User Application folder. If “AutoSetup.exe” isn't found, the restore process will be terminated.



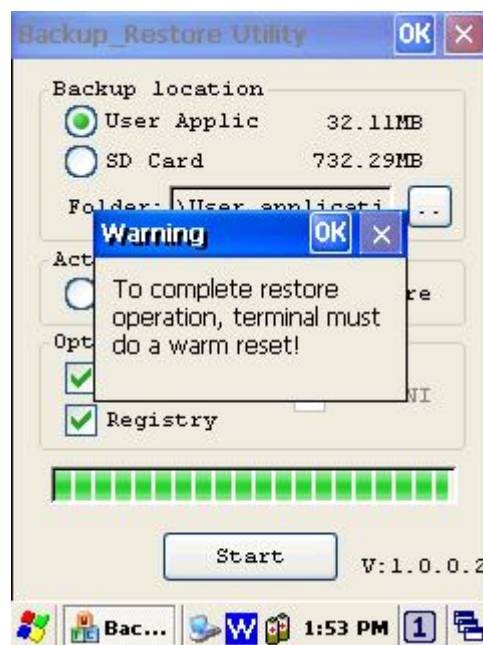
Restore Screen Display

When the restore process is completed, a message window as shown below will be popped up indicating if the process is successful or failed.



Restore Complete Message Screen

When clicking on “OK”, another message window will be popped up to alert user to perform “warm-boot” to complete the restore operation (as shown in picture below).



Warm-Boot Instruction Screen Display