

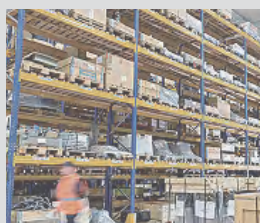


## C7X Android Intelligent Handheld Tablet



CILICO C7X is an Android-based industrial tablet computer with a 7-inch high-definition LCD screen. It is easy to operate. It also has excellent visual effects. 7200mA super large capacity lithium battery allows it to standby one week. C7X can be used for one-dimensional/two-dimensional barcode scanning, UHF RFID reading and writing, NFC and other Internet of Things functions. It supports 4G communication, dual-frequency Wi-Fi, Bluetooth, GPS positioning, etc. which ensures the efficiency and stability of users' mobile data acquisition. C7X is designed with rounded lines and equipped with industrial protective armor to ensure that the equipment has strong industrialization and aesthetics. It is widely used in power meter reading, Government-public utilities, financial management, manufacturing, ticket, traceability, medical treatment, logistics express, merchant supermarket retail, e-commerce payment and other industries. It sells well in more than 70 countries and regions, such as Europe, the United States and the Middle East.

### Vertical application



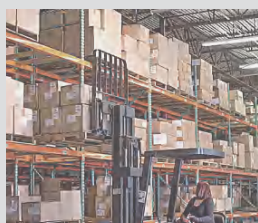
Warehouse inventory



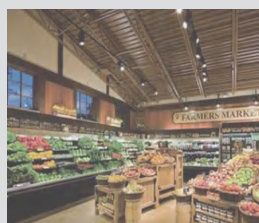
Intelligent patrol inspection



Manufacturing



Warehousing logistics



Retail business

# C7X Specifications

## Basic Parameters

Size	188×99 ×19mm(L×W×H)
Weight	406g (including battery)
Display	7.0 inch IPS screen, Resolution: 1280*720
Touch panel	Capacitive
Backlight	LED Backlight
Battery	Li-polymer,7200mAh,3.7V Uptime:more than 10hours    Standby time:100 hours
Card slot	2 SIM card slots, 2 PASM card slots(optional) 1 Micro SD card slot(Maximum 128G)
Communication interface	Type-c, Support OTG
Network connections	4G/3G/2G, Wi-Fi, GPRS, Bluetooth
Notification	Warning Tone,Multi-color LED,Vibration
Keyboard	On-screen Keyboard+3 Virtual Keys: Back, Home, Menu
Audio-frequency	Microphone, Loudspeaker and Receive
Physical Keys	Power, left scan, right scan, volume+, volume -
Headset	Support 3.5mm headset jack
Power adaptor	Input:100-240V,50/60Hz 300mA    Output:5V,2A

## Performance Parameter

CPU	Octa-core 2.0GHz
OS	Android 11 with GMS
Memory	3GB RAM/32GB ROM      4GB RAM/64GB ROM

## Working environment

Operating temperature	-10°C to 50°C
Humidity	5% to 95% (non-condensation)
Drop specification	Within operating temperature range, it can withstand several drops from 1.0m height to the concrete ground
Roll specification	300 times of 1.6 feet / 0.5 m rolls; higher than IEC roll standard
Vibration	4g SPK Sine (5Hz to 2KHz); 0.04g2/Hz randomness (20Hz to 2KHz); 60 minutes per axle, 3 axles
Electrostatic protection	+/- 10kv air discharge    +/-6kv contact discharge

## Wireless Communication

WWAN	GSM/GPRS/WCDMA/CDMA/TD-SCDMA/TDD-LTE/FDD-LTE
WIFI	WIFI frequency: 2.4GHz & 5GHz    WIFI protocol:802.11a/b/g/n/ac
GPS	GPS\BDS\GLONASS
Bluetooth	Bluetooth 5.0

## Data Collection

Scanning engine	Zebra/Honeywell scanning engine
Supported 1D barcode types	UPC/EAN,Bookland EAN,UCC Coupon Code,ISSN EAN, Code 128,GS1-128,ISBT 128, Code 39,Trioptic Code 39, Code 32, Code 93, Code 11, Interleaved 2 of 5,Discrete 2 of 5,Codabar,MSI,Chinese 2 of 5,Korean 3 of 5,Matrix 2 of 5,Inverse 1D,GS1 DataBar,Composite Codes. etc
Supported 2D barcode types	PDF417, MicroPDF417, Data Matrix, Data Matrix Inverse, Maxicode, QR Code, MicroQR, QR inverse, Aztec, Aztec Inverse, Postal Codes: US Postnet, US Planet, UK Postal, Australian Postal, Japan Postal, Netherlands KIX Code, USPS 4CB/One/Intelligent Mail, UPS FICS Pstal. etc
Camera	Front camera: 5 MP Rear camera: 13 MP, auto-focusing Rear camera flash; support flashlight

## Internet of things function

NFC	Operating frequency: 13.56MHZ Support protocol: MifareClassic (MF1) NDEF, NfcV (15693) Ultralight (MF0), IsoDep(Quasi CPU MF3), IsoDep (CPU) Reading distance: 0-5cm (depending on the type of card)
RFID	Operating frequency: CN: 920-925MHz US: 902-928MHz EU: 865-868MHz JP: 916-921MHz(w LBT) JP: 916-923MHz Support protocol: ISO18000-6C/EPC C1G2 Reading distance: 0.8m (depending on the label)
Security PSAM	Supporting ISO7816 standard, supporting 2 PSAM cards(optional)
Sensors	Light sensor, distance sensor, gravity acceleration sensor, geomagnetic transmission sensor, Hall sensor (optional)

## Others

Certification	CE/CCC/UN38.3/RoHS
Accessories	Power Adapter/USB cable/ battery/ protective cover tempered glass screen protector/ hand-strap /stylus (optional)

**Head office:** 4th Floor, HuixinIBC Building A, Zhangba 1st Road, Hi-tech Zone, Xi'an, Shaanxi, China

**Shenzhen branch:** 2nd Floor, Building A, Runfeng industrial park, Gushu, Xixiang Street, Bao'an District, Shenzhen, China

**E-mail:** contact@cilico.com

+86 29-8860 5865

+86 755-2912 0504



www.cilico.com