



**IPX2 Class Certified
EXTREME Performance**



Eco-friendly printer

SRP-F310

The SRP-F310 is a thermal printer based on the technical power of BIXOLON POS printers that is widely recognized in the market for its credibility and performance. It supports a printing speed of 270mm/sec and 180dpi/203dpi resolution and is a waterproof printer that acquired IPX 2 Class. The SRP-F310 is suitable for kitchens, restaurants and all the other applications that require a waterproof function and has the advantage of supporting various interfaces.

HIGHLIGHTS

- Liquid-Barrier™ front exit printer
 - IPX 2 certified
 - Downpour water resistance
 - Water resistant up to 15 degree from vertical
- All in one plus™ Interfaces
 - Ethernet + USB port + USB + Serial or Parallel all in one!
 - Ethernet interface on board standard
 - **USB host port on board for WLAN dongles standard**
 - High speed (480 Mbps) USB 2.0 on board standard
 - Interchangeable interface card ; Serial or Parallel
- **Fastest BIXOLON receipt printer ever- 270mm/second**
 - Optimized mechanical components and software to enable fast and stable printing
 - Improved CPU (333 MHz) and Larger memory (256k byte)
- Larger paper roll diameter up to 105mm
 - Reduces paper changes by 50% with support for 105mm rolls
- **Optional BIXOLON Interactive Linker**
 - Programmable choice using 4 buttons
 - Receipt on demand printing / Cash drawer open / Printing stop / Signal back to host POS etc..
- Built-in Power Supply
 - An ideal design for compact counters and highly traffic cashier desks
- User-convenience design
 - Click-in, Click-out cover for easy maintenance (Dip Switch / SMPS / Main Board)
 - Easy replacement of TPH and Auto-Cutter
 - Adjustable paper width guide (80mm or 83mm)
- Ergonomic design front control panel
 - Additional front angle for ergonomic design
 - High-gloss front panel to allow easy LED status check
 - Three LEDs, Paper / Power / Error
- Eco-friendly printer
 - Smallest margin (Auto-Cutter <-> TPH : 9mm) reduces unused paper
 - PowerSaver™ with BIXOLON Windows driver
- **Full featured BIXOLON POS Software Package (PSP)**
 - 1) Smart unified Windows driver
 - Advanced design tool included Image Rotate, Reverse printing and Text Macro / Margin crop
 - 2) Intelligent Interface auto-installer
 - Automatic setting for interfaces even Serial baud rate
 - 3) Advanced Utility
 - Font Artist™
 - Water-mark tool

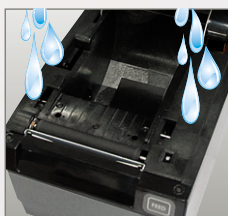
PRODUCT FEATURES

Liquid-Barrier™ front exit printer

SRP-F310 is a front exit type receipt printer adapting structure for preventing liquid infiltration and certified under the electrical protection level, IPX2 Class. Its design components include an exterior cover as well as dual layers on both sides of the printer which discharge liquid preventing it from infiltrating inside. In addition, it is designed with an outlet at the bottom of the printer for liquid that may seep inside through the cover open button.



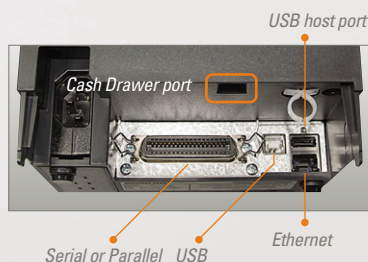
Water ventilation



Dual layers for water protection

All in one plus™ interfaces

SRP-F310 features a powerful interface that goes beyond your imagination of what you are looking for in a receipt printer. It includes USB 2.0 On board for fast data transfer and USB host port for the use of WLAN dongle* and Ethernet, which is sold separately at a high price. The four interfaces are provided as a built-in feature. Selectable Interfaces are Serial and Parallel.



* WLAN dongle : SRP-F310 is compatible with WLAN adapters using the Ralink RT73 chipset. WLAN USB adapters using chipsets other than Ralink RT73 won't work when they are connected to SRP-F310.

Optional BIXOLON Interactive Linker

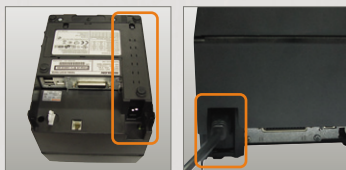
BIXOLON Interactive Linker is an advanced printer option that allows users to add commands to four customizable buttons. For instance, they can assign such BIXOLON Interactive Linker based programs as "Receipt on Demand", "Cash Drawer Open", "Printing Stop" and "Signal Back to Host" to each button to accommodate their needs.



Optional BIXOLON Interactive Linker

Built-in power supply

The power adapter is elegantly integrated into the compact printer housing. Consequently, messing around with cables is avoided which is ideal at space-limited POS terminals or highly frequented cash desks.



Ergonomic design front control panel

BIXOLON SRP-F310 is designed in a pentagon shape with separate angles for the control panel unlike existing front exit type receipt printers. This ergonomic design allows users to check the printer status more conveniently and eliminates the need to open a drawer to check the status for those who keep the printer in a drawer.



High-gloss front panel with three LEDs



IPX2 Class Certified

SPECIFICATIONS

PRINT

- PRINTING METHOD : Direct thermal
- PRINTING SPEED : 270mm/sec
- RESOLUTION : Standard : 180dpi(7dot/mm)
Optional(SRP-F312) : 203dpi(8dot/mm)
- CHARACTER SIZE : Font A: 12 X 24
Font B: 9 X 17
Font C: 9 X 24
Korean/ Chinese: 24 x 24
- CHARACTERS PER LINE :
Font A : 42 / Font B : 56 / Font C : 56
- CHARACTER SET : Alphanumeric Character : 95
Extended Character : 128 X 34 pages
International Character : 32
- BARCODES :
1D : EAN-13, EAN-8, Code 39, Code 93, Code 128, ITF, Coda Bar, UPC-A, UPC-E
2D : PDF417, QR Code

PAPER

- WIDTH : 80/83mm
- PAPER ROLL DIAMETER : Max Ø 105mm
- PAPER LOADING : Easy Paper Loading

RELIABILITY

- PRINTER UNIT : 70 million lines
- TPH : 150 Km
- AUTO CUTTER : 1,800,000 cuts

INTERFACE : USB 2.0 and USB host Port for WLAN dongle and Ethernet on board, RS-232C, IEEE1284

RECEIVE BUFFER : 4 Kbytes

NV IMAGE MEMORY : Mono: 256 Kbytes
Color: 256 Kbytes

USER DEFINE BUFFER : 12 Kbytes

EMULATION : ESC/POS™

DRIVER : Windows Driver, OPOS Driver, JPOS Driver, Linux CUPS Driver, Mac Driver

SENSOR : Paper Near End Sensor, Paper End Sensor, Cover Open Sensor

DRAWER PORT : 2 ports

POWER SUPPLY (SMPS) : AC 100~240V / DC 24V, 2.5A

DIMENSIONS : 154 X 203 X 148 (W X L X H mm)

WEIGHT (g) : 2,000
(lbs) : 4.4

OPERATING TEMPERATURE : 0 to 45°C, 10 to 80% RH
(non-condensing)

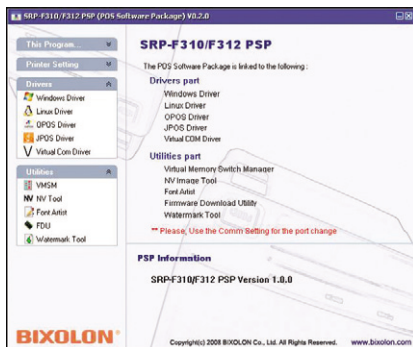
POS Printer Software

PSP (POS Software Package)

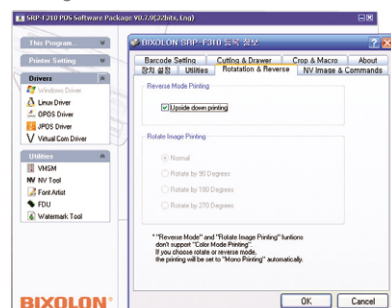
The BIXOLON PSP, new revolutionary POS printer software, has been released. BIXOLON offers a PSP that is different from existing solutions along with the newly launched thermal receipt printer SRP-F310 that has also been released with the introduction of new technologies, which is a total software package that integrates various utility tools such as Virtual Memory Switch Manager (VMSM), NV Tool, Font Artist™, and Watermark tool in addition to the various drivers in one software package so that not only simple data but also custom-style receipts can be printed by introducing many new functions while the inconvenience that users previously experienced during software installation has been removed.

1. Windows Driver

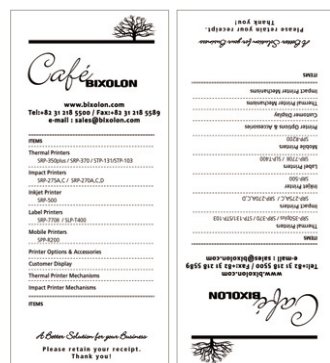
Now the users of BIXOLON printers can change the various settings of the printers using various convenient functions with the Windows driver only. Until now, the POS was perceived as a product that could not be easily handled by general users and that can be accessed only by professional POS engineers when there is a need for various changes. However, the POS printer is not a difficult product anymore. Any user can change the various settings easily with the BIXOLON PSP.



• Image Rotate



The image can be rotated by 90, 180 and 270 degrees in the direction set by the users. With this capability of rotating the image in the printing direction set by the users, images can easily be rotated with various applications' software.



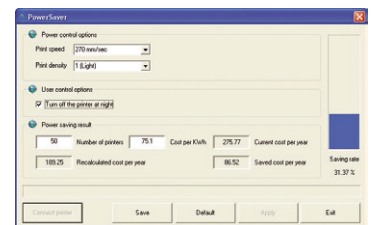
Reverse Printing

• Text Macro

Text macro is a convenient function that allows users to change the telephone numbers or addresses by modifying the properties of the Windows driver without changing the POS application.

• PowerSaver™

Users can reduce power consumption through the settings of the printer. Users can check how much power can be saved immediately by setting various functions of the printer directly to prevent unnecessary power use. This function will reduce maintenance costs for users, and the savings in power consumption contribute to preservation of the environment.



• Margin Crop (Top/Bottom)

Users can adjust the side and top and bottom margins of the paper and cut them down to units of millimeters using the convenient top and bottom crop function, and prevent unnecessary waste of paper.

• Barcode (1D/2D) Setting

Users can set 1D and 2D bar codes with this function. Type of barcode, width and height as well as HRI font can be changed.

• Logo Printing

Users can insert a logo at the desired position on the receipt. This is a convenient function to print the logo by entering the logo number of the image saved with NV Image Tool in the position of StartDoc, StartPage, EndPage, EndDoc.

• Customer Paper Size

Besides the preset printer paper, users can add custom paper size.

• High Speed Image Printing

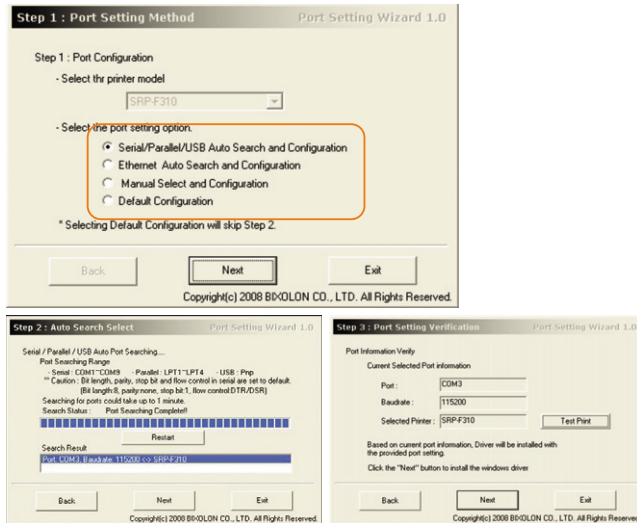
Previously, the image printing speed was slower than text printing, but image printing speed is now improved through the development of the Windows driver where a high speed algorithm is applied, and users can experience a fast image printing speed.

* The time taken to print image data is reduced by 70% compared to the existing driver.

Besides, there is a convenient function to execute utility programs easily from the "Properties" window of the Windows driver through the Utility Link (Font Artist, NV Tool, VMSM, Watermark).

2. Interface Auto Installer (Serial / Parallel / USB / Ethernet)

The interface setting may be one of the areas where users experience the greatest difficulties during the installation for using the existing printers. Port setting and Install/Add Windows driver can be done using "Port Setting Wizard", and the automatic/manual/default values can be very conveniently installed depending on the installation method. Unlike the existing method, just selecting the type of the interface will search and automatically display even the baud rate in case of Serial setting, and network setting values are automatically searched in case of Ethernet interface, which is a very useful function in installation.

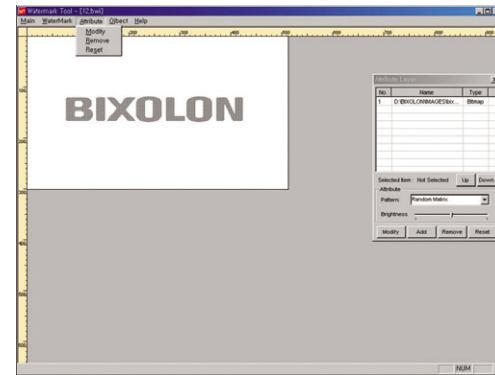


3. Utility

BIXOLON PSP comes with various Utility tools such as NV Image Tool, VMISM, Watermark Tool, Font Artist, and Net Configuration Tool in addition to the Windows driver. A receipt is not a simple means of printing the price of the product anymore, but it is used as a means of promotion. Sometimes coupons and barcodes are printed, and receipts are used as a promotion medium by inserting the company logo on the receipt. The functions to download user fonts and to design, save, and use custom fonts can be implemented with BIXOLON PSP.

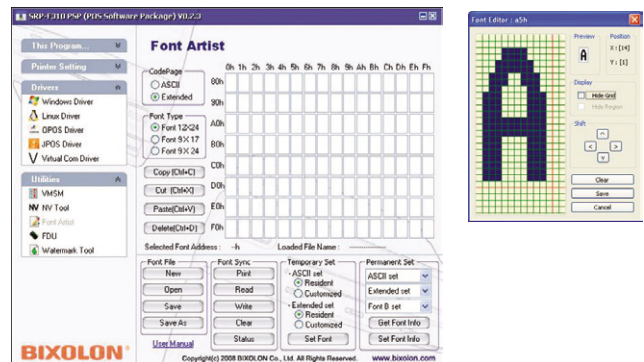
• Watermark Tool

Many users of the receipt printers use a receipt roll paper that has a pre-printed image and print the text on top of it in order to insert the images. In order to eliminate this type of inconvenience, Watermark Tool function was added to the PSP so that the watermark can be printed and it can be controlled in various ways through the various functions of text rotation, image location alignment, various patterns, and brightness settings. The function to define the objects including image, rectangle, circle and line is supported, and users can design receipts easily with the added function for editing the properties of each object along with image overlap function.



• Font Artist™

This utility tool that provides a function to create and edit custom fonts is provided. Besides the basic device fonts, users can download and use custom fonts, or edit the existing fonts. Users can redesign the shape of the fonts in the font editor dialog box by selecting the address and clicking the cell to edit. Users can check the designed fonts through the preview window while editing so that users can easily design the font and develop users' own fonts.



This publication contains product descriptions without obligation. All features and specifications are subject to change without notice. October 2010

BIXOLON®

BIXOLON Headquarters

Address #A-5F, Digital Empire Building, 980-3, Yeongtong-dong, Yeongtong-gu, Suwon-si, Gyeonggi-do, 443-702, Korea
Tel +82 (0) 31 218 5500 Fax +82 (0) 31 218 5589
E-mail sales@bixolon.com

BIXOLON America Inc.

Address 3171 Fujita St Torrance, CA 90505
Tel +1 858 764 4580 Fax +1 310 257 6869
E-mail sales@bixolonusa.com

BIXOLON Europe GmbH

Address Tiefenbroicher Weg 35, 40472 Düsseldorf
Tel +49 211 68 78 54 0 Fax +49 211 68 78 54 20
E-mail sales@bixolon.de

BIXOLON Dongguan

Address #5 Luyi 2 Road, Tangxia Town, Dongguan City, Guangdong Province, P.R.China
Tel +86 769 8262 0704 Fax +86 769 8262 0703
E-mail sales@bixolon.com