

BIXOLON Mobile Printer

SPP-R200 Presentation

Compact yet Rugged, SPP-R200



BIXOLON®

Compact yet Rugged, SPP-R200



BIXOLON Mobile Printer the SPP-R200 is an extremely small and lightweight direct thermal mobile printer for receipts / tickets and labels. It is a professional receipt printer that is the perfect choice wherever mobility is required such as bars, restaurants, home delivery services or similar. It offers the highest operational comfort with its one-handed operation and easy-paper-loading.

The SPP-R200 is a prudent choice for any mobile receipt printing application where you need fast on-demand printing with speeds up to 80mm per second (3.15inches/sec). The SPP-R200 also utilizes a long-life Lithium-ion battery with an 8 hour continuous operation life. (stand-by: 14 hours, Users are available to use up to 10 paper rolls(Φ40mm) with one battery charge)

The optional magnetic card reader integrated into the printer allows credit cards to be processed immediately at the point of transaction, increasing the customer's sense of security since the credit card does not leave their sight.

A. Rugged design and Small size

- Damage-resistance to multiple drops of up to 1.2 meters (4 feet)
- Rubber over-molding

B. Faster printing speeds : Max. up to 80mm/sec, 3.15 inch/sec

C. Long lasting Lithium-ion Battery (7.4V, 1200mAh)

- Operation hours : 8 hours
*Users are available to use up to 10 paper rolls(Φ40mm) with one battery charge
- Stand-by : 14 hours

D. Customer oriented software tools

- Firmware downloads (with cable or without cable)
Bluetooth firmware download support
- Font downloads
- NV Image tool (Logo download)

E. Easy-to-use

- One touch cover open and easy paper loading
- 4 step battery indicator and connectivity status
- Simple to change the mode from **Receipt** to **Label** (VMSM or Feed button)



Mobile POS / Retail



Hospitality



Parking Citations



- Onboard Transportation
- Field Repair / Installation
- Warehouse
- Utility billing / Meter Reading etc...



Deliveries

1. Design

A. Rugged design

- Damage-resistance to multiple drops of up to 1.2 meters (4 feet)
- Damage-resistance material for printer housing
- Rubber over-molding to prevent from damage to weak points of the printer



B. Small and lightweight design

- 79.5mm (W) x 126.7mm (L) x 43.6mm (H)
(3.1" x 5.0" x 1.7")
- 0.65lbs (293g) including paper roll, battery



Handheld size

A. Fast Printing Speed

- **Max. 80mm/sec**, 3.15 inch/sec
- Optimized mechanical components and software to enable fast and stable printing
- Extensive CPU & Memory for printing complex barcodes and fonts
 - CPU : 32-bit RISC
 - Flash Memory : 16 Mbit (NV Image: 256KByte)
 - RAM : 64 Mbit (SDRAM)
 - Buffer : 128 KByte
 - Barcodes : 1D- Codabar, ITF, UPC A, UPC E, CODE 39, CODE 93, Code 128, EAN 8, EAN 13, EAN 18
2D- QR Code, Maxi Code, PDF417, Data Matrix

3. Battery life

A. Long lasting Lithium-ion battery (7.4V 1,200mAh)

- Operation hours: 8 hours

(*Users are available to use up to 10 paper rolls(Φ40mm) with one battery charge)

- Standby hours: 14 hours

B. Battery status indicator (Low battery alarm support)

- 4 step indicator for battery left and connectivity status

Battery Status



Full (3 LEDs)



(2 LEDs)



(1 LED)



Low battery alarm

C. Smart battery management

(Monitors battery for longer life and performance)

- Sleep or Auto Power OFF Mode
- Sleep or Auto Power OFF time can be set by Virtual Memory Switch Manager

4-1. Utilities (Total Management Utility) **BIXOLON®**

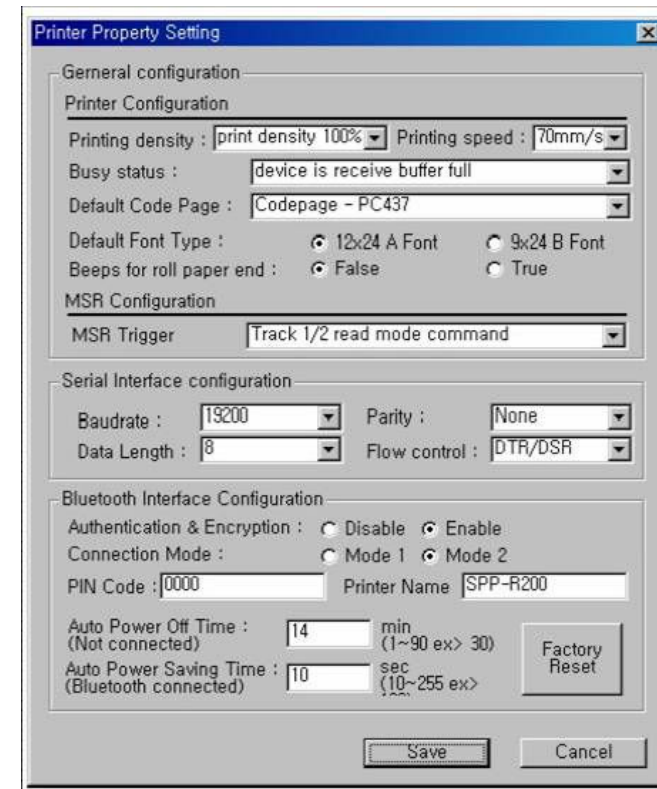
A. Customer oriented software tools provided

- Virtual Memory Switch Manager (VMSM *) to desired settings

- User-defined fonts type and size
- Default code page
- Printing Density (Value range: 80 ~ 130%)
- Printing Speed (Speed mode: 50mm/sec, 80mm/sec)
- Beeps for Roll Paper End
- MSR Trigger
- Auto Power Off Time (0 ~ 90 minutes)
- Auto Power Saving Time (10 ~ 255 seconds)
- Default Interface
- Authentication Encryption
- Bluetooth connection Mode
- PIN Code and Printer Name (Max value is 12 digit or alphabet)

* VMSM (Virtual Memory Switch Manager): VMSM software helps customers change Dip Switch by virtually, no need to be change physically.

Virtual Memory Switch Manager



The screenshot shows the 'Printer Property Setting' dialog box with the following sections and settings:

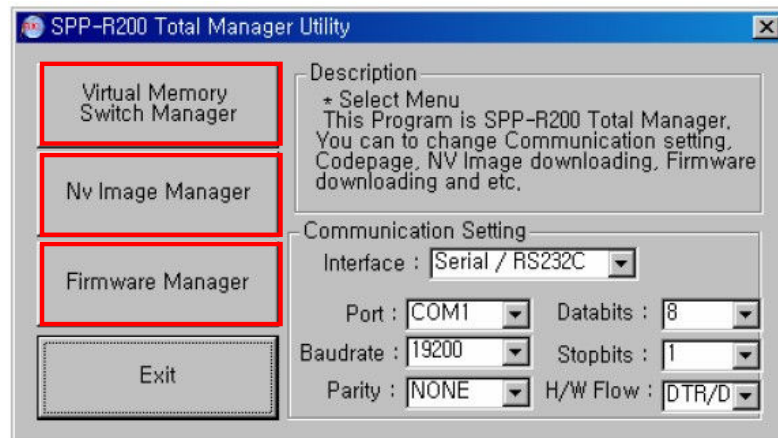
- General configuration**
 - Printer Configuration**
 - Printing density: print density 100%
 - Printing speed: 70mm/s
 - Busy status: device is receive buffer full
 - Default Code Page: Codepage - PC437
 - Default Font Type: ☒ 12x24 A Font, ☐ 9x24 B Font
 - Beeps for roll paper end: ☒ False, ☐ True
 - MSR Configuration**
 - MSR Trigger: Track 1/2 read mode command
- Serial Interface configuration**
 - Baudrate: 19200
 - Parity: None
 - Data Length: 8
 - Flow control: DTR/DSR
- Bluetooth Interface Configuration**
 - Authentication & Encryption: ☐ Disable, ☒ Enable
 - Connection Mode: ☐ Mode 1, ☒ Mode 2
 - PIN Code: 0000
 - Printer Name: SPP-R200
 - Auto Power Off Time (Not connected): 14 min (1~90 ex> 30)
 - Auto Power Saving Time (Bluetooth connected): 10 sec (10~255 ex> 30)
 - Buttons: Factory Reset, Save, Cancel

4-2. Utilities (Total Management Utility) **BIXOLON®**

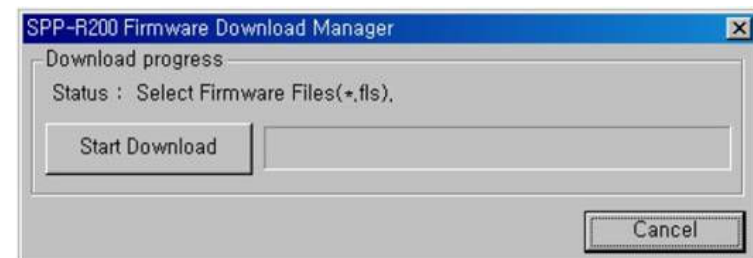
B. Customer oriented software tools provided

- **NV Image Manager**
 - For Logo download (Update available)
- **Firmware Manager for printer and Bluetooth interface**
 - For firmware download (Update available)

Total Management Utility



Firmware Manager



5-1. User conveniences

A. Various Interface Communication and Interface Capabilities

- Serial (RS-232C)/USB
- Bluetooth with high communication speed (115,200 bps)

Interface
cable connector



B. Intuitive LEDs



Bluetooth disconnected



Bluetooth connected



Error – Cover open (light-on)
Out of paper (blinking)

C. One touch cover open & Easy paper loading



One touch cover open



Easy paper loading

5-2. User conveniences

D. Simple to change the mode from Receipt to Label

- Using the Feed button or VMSM, the user can easily change the printing mode from Receipt to Label or from Label to Receipt



**Available Receipt and Label with
no hardware change !**



E. Portable device suited for outdoor usage

Belt Strap (Default)



**Comfortably wear the printer via
Belt Strap or Leather Case**

Leather Case (Optional)



6. Magnetic Stripe Reader (MSR)

A. Magnetic Stripe Reader (MSR)

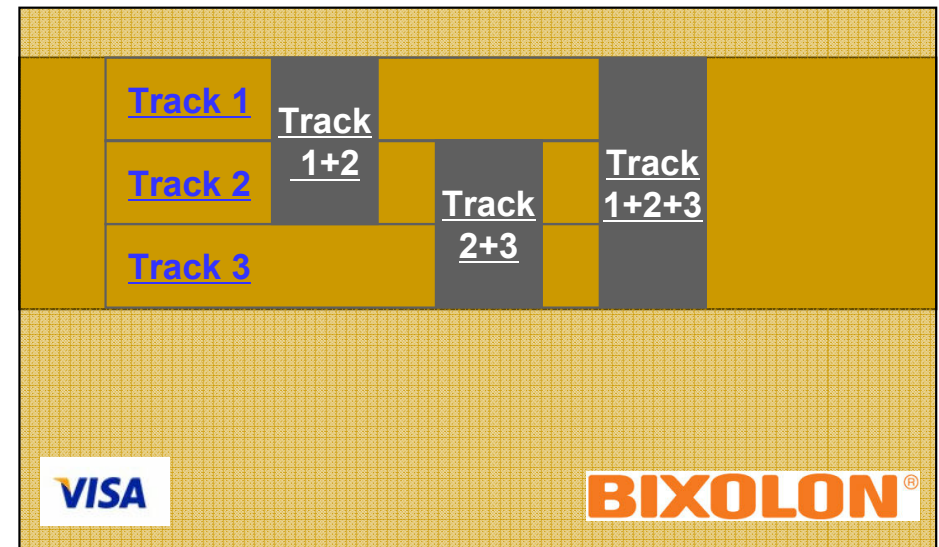
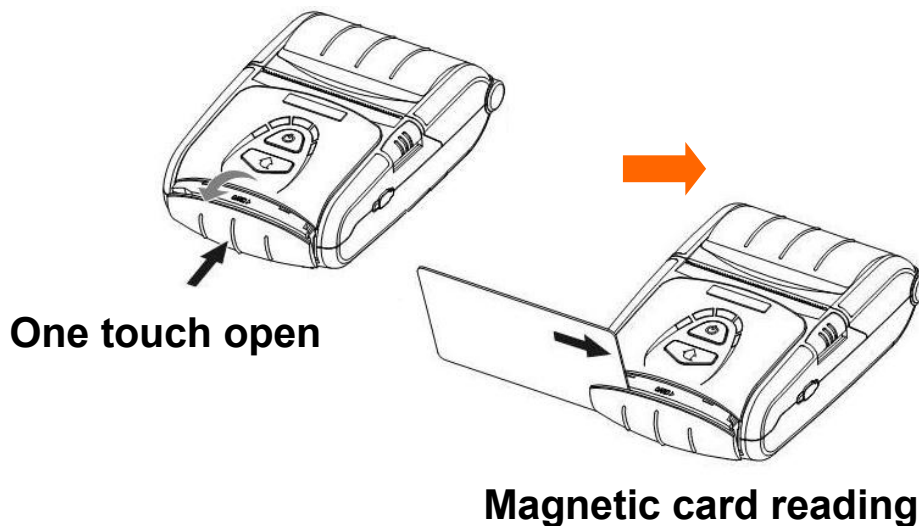
- One touch open (Patent applied)
- All track conditions supported by Virtual Memory Switch Manager

Manager

Single track (1st or 2nd or 3rd),

Dual track (1st/2nd track or 2nd/3rd track)

Triple track (1st/2nd/3rd track)



Magnetic stripe tracks

7. Options

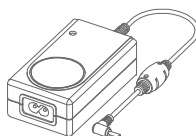
A. Standard (In a Box)



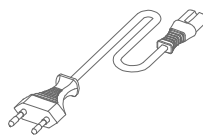
Printer



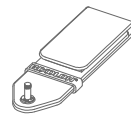
Battery



Battery
Charger



Power
Cord



Belt
Strap



Installation
Guide CD



Paper

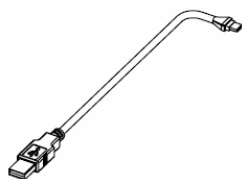


User
Manual

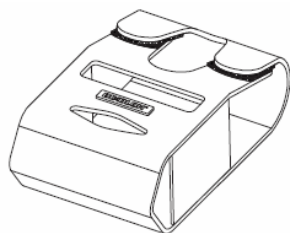


Cleaning
Pen

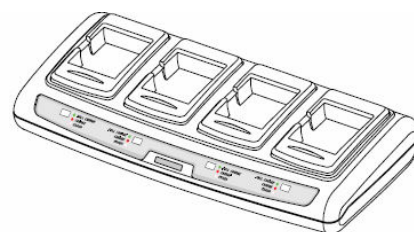
B. Optional accessories



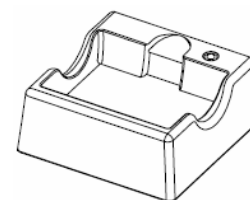
Interface
cable



Leather Case



Quad Charger



Battery Holder



Cigarette
Lighter Jack
Charger

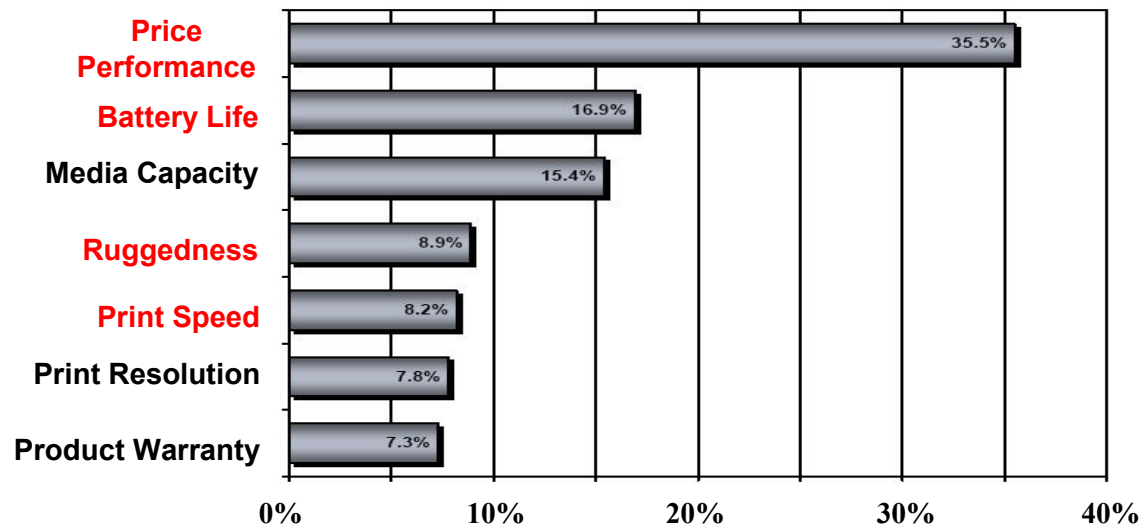


Spare
Battery

8. Product selection Criteria

SPP-R200 has excellent qualities such as **Longer battery life**, **Superior Ruggedness**, **High printing speed** with **Reasonable price**.

※ Channel Respondents' Impression of Most Important Printer Selection Criteria
(Percent of Respondents Offering Mobile Printers)








Referred from VDC, Mobile Transaction Printers research 2006

9. Specification

Item		Description	Item		Description
Print	Print method	Direct thermal	Reliability	TPH	50 km
	Print speed	Max.80 mm/sec (3.15inch/sec)		Battery	500 cycles rechargeable
	Resolution	203 dpi (8dot/mm)		Drop	Multiple drops of up to 1.2 meters (4 feet)
	Paper supply method	Easy paper loading	Connectivity	Interface	Serial/USB, Bluetooth
	Character size	Font A : 12×24 Font B : 9×24	Battery charger	Input	Voltage : 100 ~ 240 VAC Current : 0.5A (Max. at 110VA)
	Character per line	Font A : 32 Font B : 42		Output	Voltage : 8.4 VDC Current : 0.8A
	Character sets	Alphanumeric character : 95 Extended graphic : 128×30 pages International character : 32	Battery	Type	Lithium-ion
	Barcodes	1D: Codabar, ITF, UPC A, UPC E, CODE39, CODE93, CODE128, EAN8, EAN13, EAN18 2D: QR Code, Maxi Code, PDF417, Data Matrix		Output	Voltage : 7.4 VDC Capacity : 1200 mAh
	Emulation	BXL/POS		Charging time	2.5 Hrs
	Drivers	WinCE 4.2, WinCE 5.0 (Customized Driver Supported)	Dimension	Printer	79.5mm x 126.7mm x 43.6mm (3.1" x 5.0" x 1.7")
	Sensor	Paper end sensor, Rear cover open switch	Weight	Printer	Printer : 184g (0.41lbs) Printer+battery : 236g (0.52lbs) Printer+battery+paper roll : 293g (0.65lbs) Shipping : Approximately 1000g (2.2lbs)
	Cutter type	Manual cutter			
Paper Roll	Paper type	Thermal paper	Accessories	Default	Battery, Battery Charger, Belt Strap
	Width	58 ± 0.5 mm (2.28" ± 0.2")		Option	Interface cable, Leather Case, Spare Battery, Battery Cradle, Cigar Jack Charger, Quad Charger
	Diameter	Max. ø40 mm (1.57")			

10. Comparison Table

	BIXOLON SPP-R200	Epson TM-P60	Zebra MZ220	Citizen CMP-10	Fujitsu FTP- 628WSL110/120
					
Printing method	Direct Thermal	Direct Thermal	Direct Thermal	Direct Thermal	Direct Thermal
Print resolution (dpi)	203	203	203	203	203
Max print speed (mm/sec, inch/sec)	80 / 3.15	80 / 3.15	76.2 / 3	49.8 / 1.96	40 / 1.58
Media width (mm)	58	58	50.8	58	58
Max Print Area - Width (mm)	48	?	48	48	48
Media max roll size (mm)	Φ40	Φ51	Φ47.8	Φ50	Φ36
CPU	32 bit	-	32 bit	8 bit	32 bit
Battery	1200mAh, Lithium-ion	2200mAh, Lithium-ion	1500mAh, Lithium-ion	2000mAh, Lithium-ion	3.7VDC, Lithium-ion
MSR	Option	No	No	Option	No
Memory - RAM	64 Mbit (SDRAM)	-	8 Mbit (SRAM)	1 Mbit (SRAM)	?
Interface	Serial/USB, Bluetooth	RS232, Bluetooth, IrDA, WLAN	USB, Bluetooth, IrDA, WLAN	RS232, Bluetooth, IrDA	RS232, Bluetooth, IrDA
Drop test (feet)	4	-	4	?	-
Size (W x L x H) (mm)	79.5 x 126.7 x 43.6	159 x 103 x 65	80.8 x 167.6 x 57.4	90 x 116 x 51	84 x 136.5x 30
Weight (g)	286	670	320	329	275

BIXOLON Mobile Printer

SPP-R200

- Thank you -