

APPLICATION MANUAL



Applications for

M3 GREEN, T and POS

Version : 1.0.0

Release Date : January 28, 2011

www.m3mobile.co.kr

APPLICATION MANUAL

Table of Contents

TABLE OF CONTENTS	2
VERSION INFORMATION	3
CHAPTER 1. STARTUP GUIDE.....	4
1.1 StartUp.inf	4
1.2 M3.ini	5
CHAPTER 2. SCANNER(SOFTWARE DECODER)	9
2.1 M3ScanTest.exe.....	9
2.2 ScanEmul.exe	16
2.3 Helpful Tips	20
CHAPTER 3. SCANNER(HARDWARE DECODER)	21
3.1 M3ScanTest.exe.....	21
3.2 ScanEmul.exe	26
CHAPTER 4. IMAGER.....	30
4.1 M3ScanTest.exe.....	30
4.2 ScanEmul.exe	44
4.3 TestCam.exe	48
CHAPTER 5. CAMERA	50
5.1 M3P CameraTest.exe (M3 GREEN only)	50
5.2 TestCam.exe (M3 T only)	51
CHAPTER 6. RFID	52
6.1 TestStataion.exe.....	52
6.2 Helpful Tips	52
CHAPTER 7. APPCENTER.....	53
7.1 AppCenter	53

APPLICATION MANUAL

Flash Disk Version Information



VERSION INFORMATION

Ver 1.0.0 (20110127)

MODULE	PROGRAM	VERSION	DATE
StartUp	McStart.exe	Ver 1.0.8	2011-01-14
SCANEER (Software Decoder)	M3ScanTest.exe	Ver 3.0.0	2010-06-21
	ScanEmul.exe	Ver 3.6.1	2011-01-03
	KScanBar.dll	Ver 1.6.2	2011-01-03
	Decoder	Ver 1.6.1	2010-12-24
	Firmware	Ver 2.0	2009-01-14
SCANEER (Hardware Decoder)	M3ScanTest.exe	Ver 2.2.1	2011-01-03
	ScanEmul.exe	Ver 2.2.1	2011-01-03
	KScanBar.dll	Ver 2.2.0	2010-11-24
IMAGER	M3ScanTest.exe	Ver 2.1.0	2010-04-22
	ScanEmul.exe	Ver 2.1.0	2010-04-22
	TestCam.exe	Ver 2.0.1	2010-12-29
	M3MobileImager.dll	Ver 2.1.0	2010-11-08
CAMERA (GREEN)	TestCam.exe	Ver 2.0.1	2011-01-17
	M3P_Camera.dll	Ver 1.6.3	2011-01-07
CAMERA (T)	TestCam.exe	Ver 2.0.2	2011-01-26
	M3P_Camera.dll	Ver 2.0.2	2010-12-28
RFID	TestStation.exe	Ver 1.0.2	2010-09-30
	CAP20_Mobile.dll	Ver 2.0	2007-01-26
AppCenter	M3AppCenterCe.exe	Ver 1.0.6	2011-01-17

APPLICATION MANUAL



CHAPTER 1. STARTUP GUIDE

Product	Model	Type	OS	Note
GREEN T	MC-6X00S	StartUp	Windows CE 5.0	In StartUp folder
	MC-6700S	StartUp	Windows CE 5.0	In StartUp folder

1.1 StartUp.inf

In StartUp.inf, user can write commands to copy, move or delete files, or to create folder, shortcut to a specific application or registry values. Moreover, DLL register, unregister and auto run of an executable file is also possible.

Here is an example of CopyFile.

```
CopyFile=/H "\Flash Disk\Scanner\KScanBar.dll" "\Pages\KScanBar_TEST.dll"
```

This command will copy KScanBar.dll which is located in \Flash Disk\Scanner folder to \Pages folder and rename it to KScanBar_TEST.dll after hard reset (/H command, /S is used for soft reset).

For all commands (copy, delete, etc.), user can select when to execute the command; after hard reset or soft reset. In addition, for copy and move commands, user can rename the file as shown in the above example.

Command structure and example is described below:

```
// CopyFile=[execute type] [path to original file] [path to copy]
Eg: Example shown above.
// MoveFile=[execute type] [path to original file] [path to move]
Eg: MoveFile=/s "\My Documents\a.cab" "\Flash Disk\a.cab"
//DeleteFile=[execute type] [path to the file to delete]
Eg: DeleteFile=/H "\Flash Disk\a.lnk"
//CreateFolder=[execute type] [path to the folder to create]
Eg: CreateFolder=/h "\My Documents\hardreset"
//ShortCut=[execute type] [path to original file] [path to the quick link]
Eg: ShortCut=/s "\Flash Disk\a.exe" "\My Documents\a.lnk"
//RegSetValue=[execute type] [data type (string, dword, etc)] [[path] : value]
Eg: RegSetValue=/s string [HKEY_CURRENT_USER\MCSSetting\Scanner]test : "test"
Eg: RegSetValue=/s dword [HKEY_CURRENT_USER\MCSSetting\Scanner]intTest : 68
```

APPLICATION MANUAL



1.2 M3.ini

If you open M3.ini file with Notepad, you will see the following lines at the top of the page. These lines show compatible devices and version information.

```
// WinCE
// Ver 1.0.8 Build:2011.01.14 Copyright 2011 M3Mobile, Inc. All Right reserved.
```

If not commented separately, '0' represents disable and '1' represents enable.

```
[SCANNER]
Install=1
EmulAutoON=1
1D_ExeFile=\Flash Disk\Scanner\M3ScanTest.EXE
1D_EmulFile=\Flash Disk\Scanner\ScanEmul.exe
2D_ExeFile=\Flash Disk\Imager\M3ScanTest.EXE
2D_EmulFile=\Flash Disk\Imager\ScanEmul.exe
```

Setting Install value to '1' will create Shortcut of scanner test program about 1D_ExeFile or 2D_ExeFile at desktop.

```
[CAMERA]
Install=1
1D_ExeFile=\Flash Disk\Camera\TestCam.exe
2D_ExeFile=\Flash Disk\Imager\TestCam.exe
```

Setting Install value to '1' will create Shortcut of camera program about 1D_ExeFile or 2D_ExeFile at desktop.

```
[APPCENTER]
AutoOn=0
ExeFile=\Flash Disk\AppCenter\M3AppCenterCe.exe
```

Setting Install value to '1' will start AppCenter automatically after soft/hard reset.

<pre>[WLAN] Install=1 AutoON=0</pre>	<pre>[BT_INIT] Install=0 AutoON=0</pre>
--------------------------------------	---

Setting Install value to '1' will enable WLAN and bluetooth of the below menu of desktop. Setting Install value to '1' will start WLAN and bluetooth automatically after soft/hard reset.

APPLICATION MANUAL



```
// Type      - 0:MC6300S, 1:MC6400S, 2:MC6500S, 3:MC6100S, 4:MC6700S, 5:MC8800S
// Scanner   - 0:Opticon Scanner, 1:Symbol scanner, 2: Intermec scanner,
                3: HHP Scanner
// Display OFF Mode(M3Green Only) - 0:Default, 1: shot(sleep), long(display
off),                2: shot(display off), long(sleep)
[DEVICE_TYPE]
Type=0
Scanner=0
LCDMode=0
```

It is important to set device type correctly to make it work properly. For example, if you are using MC6300 with Intermec scanner, set Type=0 and Scanner=2.

```
// M3GREEN
// Left Up and Down key can be configured as one of following seven
functionalities.
// Install : 0(disable), 1(enabled)
// FKeyTray : 0(Task bar UI Hide), 1(Task bar UI View)
// FMode: 0(Default: numeric key), 1(Enable Hot Keys: 1, 2, 3, 4 => F1, F2, F3,
F4)
// Function : 0=Default 1=VK_ESCAPE 2=VK_F20 3=VK_F21 4=VK_F22(S Button)
5=VK_F23(C Button) 6=FKey 7=SIP
[M3GREEN_LEFT_SIDE_KEY]
Install=1
FKeyTray=1
FMode=0
LSideDown=6
LSideUp=1
```

For M3 Green, key customization can be done in M3.ini. Setting Install value to '1' will start user-defined key automatically after soft/hard reset.

APPLICATION MANUAL



```
// M3T
// 0=Default 1= SIP ON/OFF 2=Kor/Eng 3=Windows Key 4=VK_F20 5=VK_F22 6=VK_F23
// 7=Space 8=Back Space 9=Tab 10=Enter(VK_RETURN) 11=Up 12=Down 13=Left 14=Right
// 15=ESC 16=Internet Explorer 17=Command Prompt 18=Wordpad 19=Media Player
// 20=Task Manager
[M3T_SIDE_KEY]
Install=0
Camera=0
Scanner=0
VolUp=0
VolDown=0
// Select one '1. phone version' or '2. no phone version'
// 1. Phone Version
LeftSoft=0
RightSoft=0
// 2. No phone version
F1=0
F2=0
F3=0
F4=0
```

For M3 T, key customization can also be done in M3.ini. Setting install value to '1' will start user-defined key automatically after soft/hard reset. Key customization is as above. For example, to perform the Space function with Camera button, set the camera value as '7'. Note that M3 T keypad is divided into including Phone and excluding Phone keypads. Thus, it is divided into LeftSoft and RightSoft for Phone version and F1, F2, F3 and F4 for No phone version.

```
//Change the StartPage of Internet Explorer.
// Install : 0(disable), 1(enabled)
[IE]
Install=0
StartPage=http://www.google.com/
```

This option sets the internet homepage. Setting install value '1' will apply setting after soft/hard reset.

```
// Change the desktop background image.
// Install : 0(disable), 1(enabled)
// Desktop : Path to the image file
[WALLPAPER]
Install=0
Tile=0
Desktop=\Flash Disk\Startup\7.bmp
```

This option sets the wallpaper. Setting install value '1' will set the image in desktop path as wallpaper image.

```
// Enables the Keypad LED.
// Install : 0(disable), 1(enabled)
[KEYPAD_LED]
Install = 0
```

This option controls LED lighting of keypad. Setting install value '1' will enable the LED lighting and '0' will disable it.

APPLICATION MANUAL



```
// Automatic restore after Hardware reset with a help of MS-Backup.exe.  
// ExeFile : Program Path  
// Reset : 0 -> no reset after restore, 1 -> reset after restore  
// Type : 0 -> restore all data, 1 -> restore only PIMS data  
[RESTORE]  
Install=0  
ExeFile=\Flash Disk\xPIMS\MS-Backup.exe  
Type=0  
Reset= 0
```

This option restores backup data of device using MS-Backup.exe program when hardware reset. Setting install value '1' will restore data after hard reset. ExeFile inputs the path of MS-Backup.exe program to restore. Type '0' restores all data and type '1' restores only PIMS data. And Reset determines whether to perform soft reset after restoration.

APPLICATION MANUAL



CHAPTER 2. SCANNER(SOFTWARE DECODER)

Product	Model	Type	OS	Note
GREEN	MC-6X00S	Software Decoder	WinCE 5.0	1D Scanner
T	MC-6700S	Software Decoder	WinCE 5.0	1D Scanner
POS	MC-8800S	Software Decoder	WinCE 5.0	1D Scanner

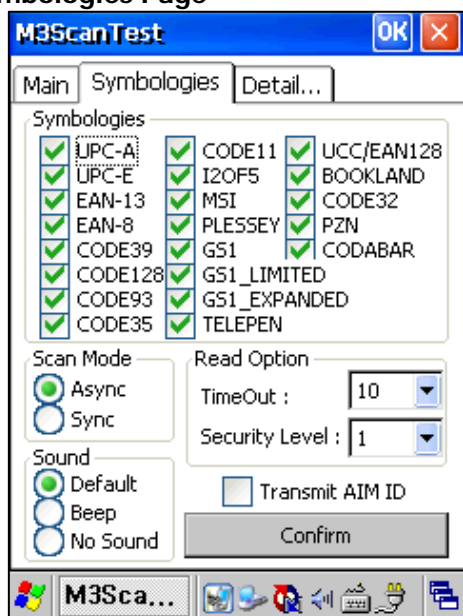
2.1 M3ScanTest.exe

1. Main Page



- **BarCode Type and data is displayed as list**
- **Scan button** : Start scanning
- **Scan Cancel** : Stop scanning
- **Clear List** : Clear the scan result in the list box
- **Information button** : Displays firmware, dll, decoder versions
- M3ScanTest version is indicated at the bottom.

2. Symbolologies Page

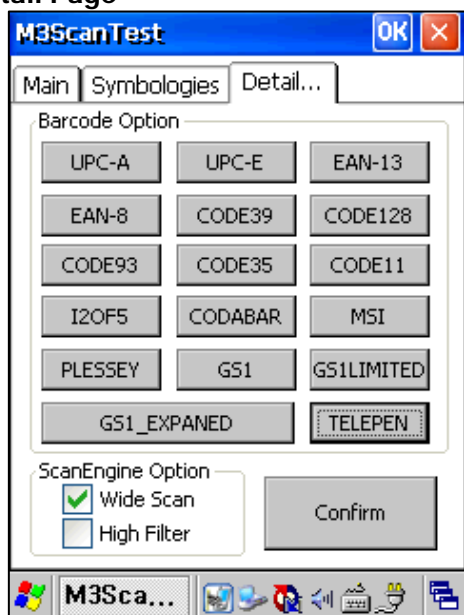


- **Symbology and Scan option configuration**
- Enable or disable 21 different types of barcode
- **Scan Mode**
 - **Async** : Emits beam while the scan button is pressed. Limited by the TimeOut.
 - **Sync** : Emits beam for TimeOut period.
- **Read Option**
 - **TimeOut** : Beam emitting duration
 - **Security Level** : Determines how many successful read(s) confirm the result. Ex) 2 means it needs to successfully read the barcode twice to output the result
 - **AIM ID** : Add AIM ID of the barcode at the front of the data.
- **Sound**
 - **Default** : default sound after a successful scan
 - **Beep** : Beeps after a successful scan
 - **No Sound** : No sound after a successful scan

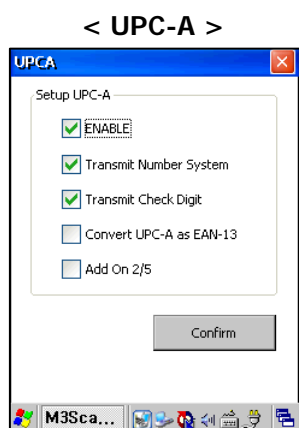
APPLICATION MANUAL



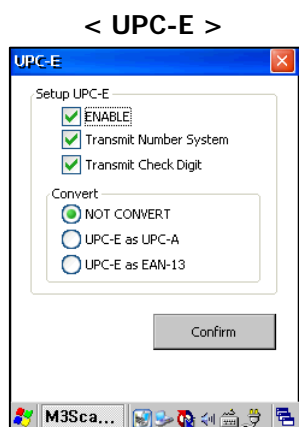
3. Detail Page



- **Advanced configuration for each barcode**
- Enter advanced settings for each barcode type by click on them
- **ScanEngine Option**
 - **Wide Scan** : Controls the width of the beam.
 - **High Filter** : Improved filter of scan engine. Improves accuracy but slows decoding.



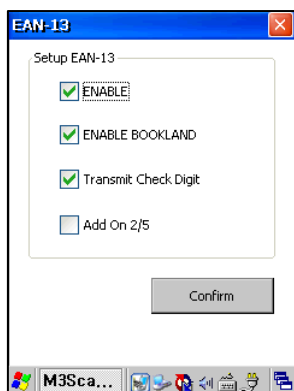
- **ENABLE** : Enable barcode decoding
- **Transmit Number System** : Front most number output option
- **Transmit Check Digit** : Check digit output option
- **Convert UPC-A as EAN-13** : Converts UPC-A to EAN13 by adding '0' at the front
- **Add On 2/5** : Option to read two consecutive barcodes when UPC-A types have neighboring additional barcodes (2 and 5 spaces)



- **ENABLE** : Enable barcode decoding
- **Transmit Number System** : Front most number output option
- **Transmit Check Digit** : Check digit output option
- **Convert option**
 - **NOT CONVERT** : Does not convert barcodes
 - **UPC-E as UPC-A** : Convert to UPC-A by inserting '0' in the data
 - **UPC-E as EAN-13** : Convert to EAN-13 by adding '0' at the front and in the middle of data

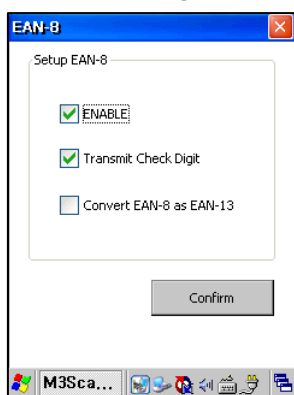
APPLICATION MANUAL

< EAN-13 >



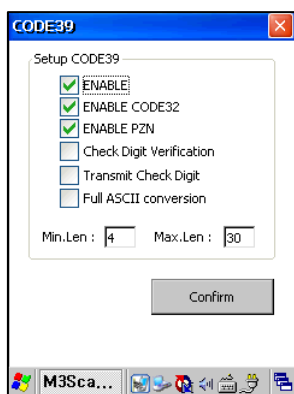
- **ENABLE** : Enable barcode decoding
- **ENABLE BOOKLAND** : Enable BOOKLAND_EAN barcodes. When unchecked, it will read BOOKLAND_EAN type as simple EAN-13
- **Transmit Check Digit** : Check digit output option
- **Add On 2/5** : Option to read two consecutive barcodes when EAN-13 types have neighboring additional barcodes (2 and 5 spaces)

< EAN-8 >



- **ENABLE** : Enable barcode decoding
- **Transmit Check Digit** : Check digit output option
- **Convert EAN-8 as EAN-13** : convert to EAN-13 by adding five zeros at the front of the data

< Code39 >



- **ENABLE** : Enable barcode decoding
- **ENABLE CODE32** : Enable code32 barcodes. When unchecked, it will read code32 type as simple code39
- **ENABLE PZN** : Enable PZN barcodes. When unchecked, it will read PZN type as simple code39
- **Check Digit Verification** : Only decodes the barcode with check digit
- **Transmit Check Digit** : Check digit output option
- **Full ASCII Conversion** : Outputs the letters when letters are included in the data
- **Min / Max Length** : Minimum and maximum length of the readable data

APPLICATION MANUAL



< Code128 >

- **ENABLE** : Enable barcode decoding
- **ENABLE UCC/EAN-128** : Enable UCC/EAN-128 barcodes. When unchecked, it will read UCC/EAN-128 type as simple code128
- **Function ASCII** : Allows the user to insert data for supported types of code128 barcodes
- **Min / Max Length** : Minimum and maximum length of the readable data

< Code93 >

- **ENABLE** : Enable barcode decoding
- **Min / Max Length** : Minimum and maximum length of the readable data

< Code35 >

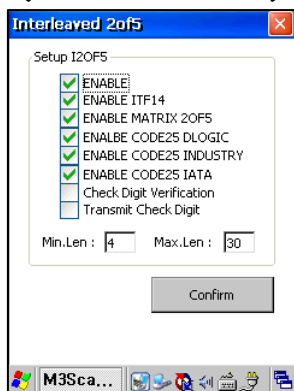
- **ENABLE** : Enable barcode decoding

< Code11 >

- **ENABLE** : Enable barcode decoding
- **Transmit Check Digit** : Check digit output option
- **Check Digit Verification** : Only decodes the barcode with check digit(s)
- **Min / Max Length** : Minimum and maximum length of the readable data

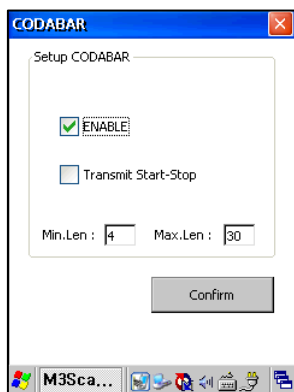
APPLICATION MANUAL

< I2OF5 > (Interleaved 2 of 5)



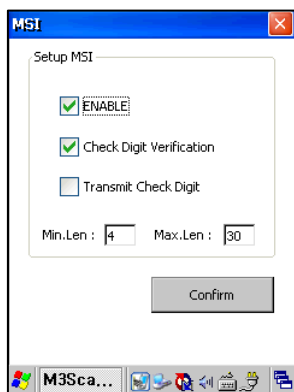
- **ENABLE** : Enable barcode decoding
- **ENABLE ITF14** : Enable ITF14 barcodes
- **ENABLE MATRIX 2OF5** : Enable MATRIX 2OF5 barcodes
- **ENABLE DATALOGIC** : Enable DATALOGIC barcodes
- **ENABLE INDUSTRY** : Enable INDUSTRY barcodes
- **ENABLE IATA** : Enable IATA barcodes
- **Check Digit Verification** : Only decodes the barcode with check digit
- **Min / Max Length** : Minimum and maximum length of the readable data

< CODABAR >



- **ENABLE** : Enable barcode decoding
- **Transmit Start-Stop** : Outputs start-stop bit of Codabar type barcodes
- **Min / Max Length** : Minimum and maximum length of the readable data

< MSI >



- **ENABLE** : Enable barcode decoding
- **Check Digit Verification** : Only decodes the barcode with check digit
- **Transmit Check Digit** : Check digit output option
- **Min / Max Length** : Minimum and maximum length of the readable data

APPLICATION MANUAL



< PLESSEY >

- **ENABLE** : Enable barcode decoding
- **Check Digit Verification** : Only decodes the barcode with check digit
- **Transmit Check Digit** : Check digit output option
- **Min / Max Length** : Minimum and maximum length of the readable data

< GS1(RSS-14) >

- **ENABLE** : Enable barcode decoding

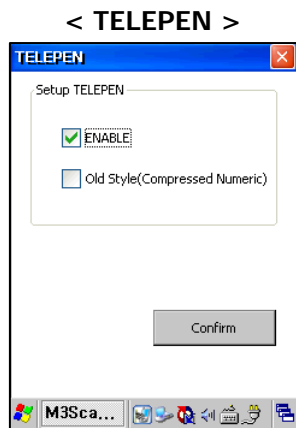
< GS1_LIMITED >

- **ENABLE** : Enable barcode decoding

< GS_EXPANDED >

- **ENABLE** : Enable barcode decoding

APPLICATION MANUAL



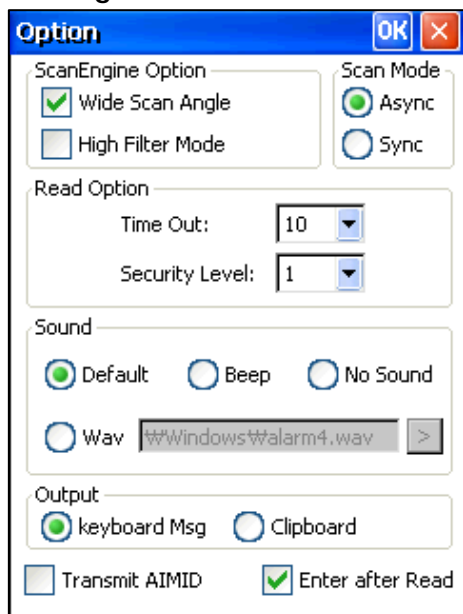
- **ENABLE** : Enable barcode decoding
- Old Style (Compressed Numeric)

APPLICATION MANUAL



2.2 ScanEmul.exe

1. Option Page



- **Reading Option**
 - **Wide Scan Angle:** Controls the width of the beam
 - **High Filter Mode:** Improved filter of scan engine. Improves accuracy but slows decoding.
- **SyncMode**
 - **Async :** Emits beam while the scan button is pressed. Limited by the TimeOut.
 - **Sync :** Emits beam for TimeOut period
- **Scan Mode**
 - **Time Out :** Beam emitting duration
 - **Security Level :** Determines how many successful read output the result.
Ex) 2 means it needs to successfully read the barcode twice to output the result
- **Sound**
 - **Default :** default sound after a successful scan
 - **Beep :** Beeps after a successful scan
 - **No Sound :** No sound after a successful scan
 - **Wav :** user defined wav sound
- **Output**
 - **keyboard Msg :** Outputs the result as keyboard type
 - **Clipboard :** Outputs the result to clipboard
- **Read after Enter :** Send VK_RETURN message after read
- **Transmit AIMID :** Output AIM ID of the barcode

APPLICATION MANUAL

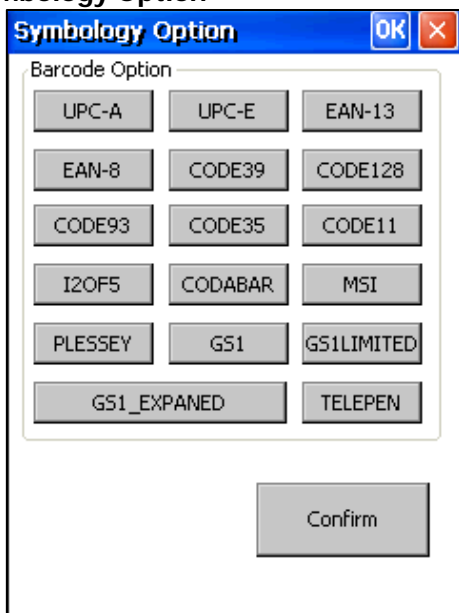


2. Symbolologies Page



- Enable or disable 21 different types of barcode

3. Symbology Option



- Advanced configuration for each barcode
- Enter advanced settings for each barcode type by click on them

APPLICATION MANUAL



4. Prefixes / Suffixes

The 'Prefixes/Suffixes' dialog box has a blue title bar with 'OK' and 'X' buttons. It contains two input fields for 'Prefix' and 'Suffix', each preceded by a barcode icon. Below these are two checkboxes: 'Vertical Tab' and 'Horizontal Tab'. At the bottom is a section titled 'Escape Sequences' containing a list of codes and their functions:
• \n : New line
• \r : Carriage return
• \b : Backspace
• \t : Vertical tab
• \w :
• [f1] : function key (f1 ~ f9) use prefix
There is also a checkbox for 'delay after prefix' followed by a numeric input field and the unit 'sec'. 'OK' and 'Cancel' buttons are at the bottom right.

- **Prefix** : Enter data or command at the front of barcode data
- **Suffix** : Enter data or command at the end of barcode data
- **Vertical Tab** : Enables Vertical tab only even in Skip Escape mode
- **Horizontal Tab** : Enables Horizontal tab only even in Skip Escape mode
- Cannot enter commands if clipboard output is used

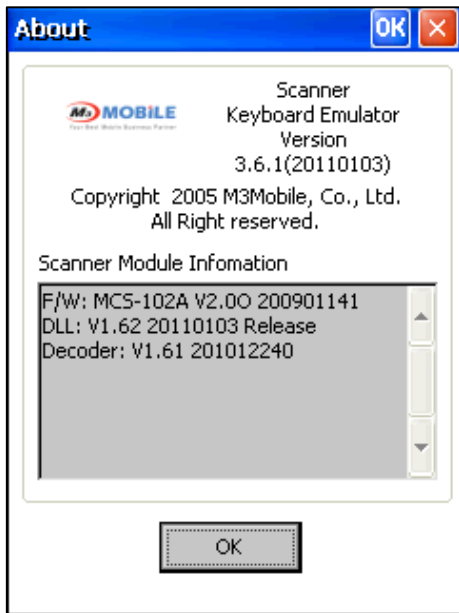
5. Button Setting

The 'Button Settings' dialog box has a blue title bar with 'OK' and 'X' buttons. It features three dropdown menus, all currently set to 'None'. Below the dropdowns is a text label: '3 side buttons and navigation keys on the PDA are used to initiate the scanner'. At the bottom are 'OK' and 'Cancel' buttons.

- Support up to 3 keys
- Can use the 4 side keys

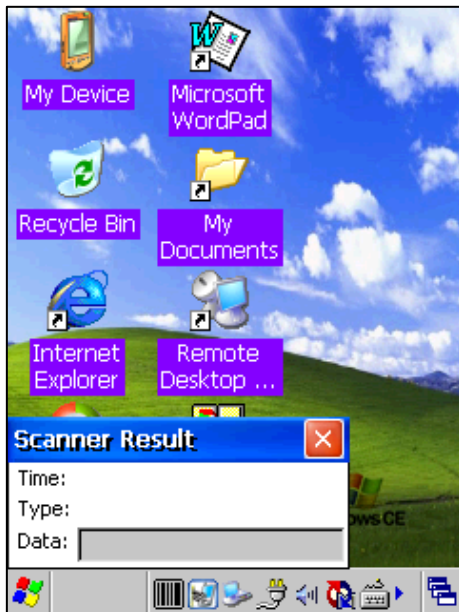
APPLICATION MANUAL

6. About



- Shows versions of
 - ScanEmul
 - Firmware
 - Decoder
 - DLL

7. Result Window



- Displays
 - Decoded data
 - Barcode Type
 - Time taken

8. Symbology Advance Settings in ScanEmul

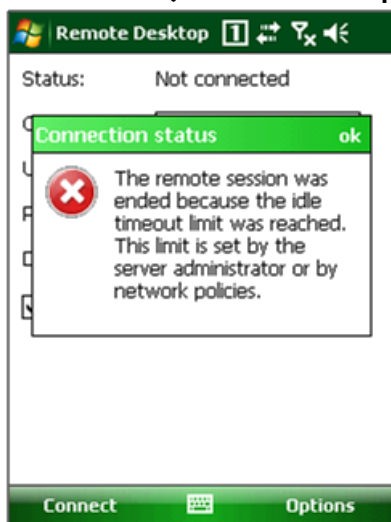
It is the same as the option settings shown in the ScanTest.exe section. Please refer to ScanTest.exe section for more details.

APPLICATION MANUAL

2.3 Helpful Tips



■ The RDC (Remote Desktop Connection) is disconnected automatically.

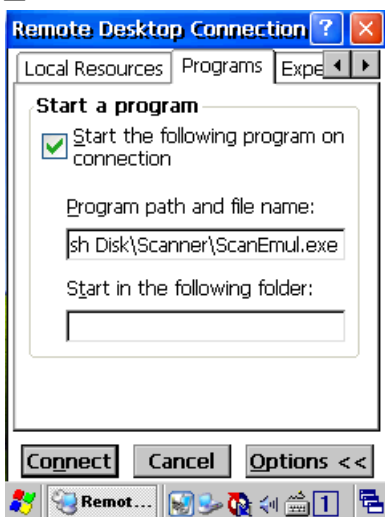


If you are using the RDC (Remote Desktop Connection) on your PDA, you may experience automatic disconnection of the RDC with the left error message on the screen. This error message appears because the terminal has been in the idle state for longer than the time limit set by the server administrator or by network policies as indicated in the message. The time limit is usually set to 10 minutes.

Since the time limit is set by the network system, it will not be solved by any configuration on the PDA. To prevent this automatic disconnection, 1. You will need to set the time limit longer than 10 minutes on the network system (consult your network administrator) or 2. Periodically send a packet to the server on you application to avoid going in to the idle state for longer than

10 minute. The packet sending period should be less than 10 minute obviously. Please alter either the 1) network system time limit or 2) your application on your preference.

■ Scan button does not work in Remote Desktop of M3 GREEN.



If scan button is not working in ScanEmul when using Remote Desktop, check the following lists.

Checking procedure:

1. WLAN must be connected to an AP properly.
2. Check if you can browse a website (Eg: www.google.com).
3. Launch Remote Desktop and configure as below.
 - \\Flash Disk\\Scanner\\ScanEmul.exe
4. Close the option Page and enter IP address that you wish to access.
5. Click connect button and enter appropriate ID and PW to connect to remote desktop.
6. Perform scan test after opening notepad or wordpad from remote desktop.

APPLICATION MANUAL

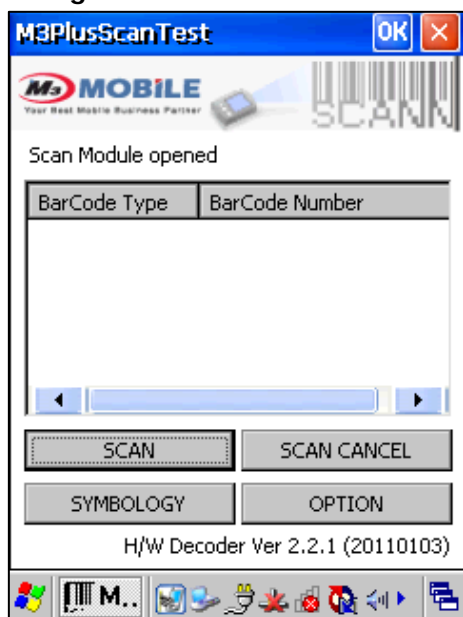


CHAPTER 3. SCANNER(HARDWARE DECODER)

Product	Model	Type	OS	Note
GREEN	MC-6400S	Hardware Decoder	WinCE 5.0	1D Scanner

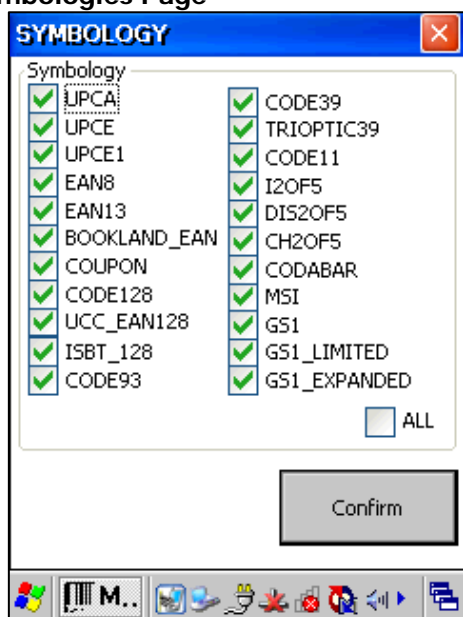
3.1 M3ScanTest.exe

1. Main Page



- **BarCode Type and data is displayed as list**
- **Scan button** : Start scanning
- **Scan Cancel** : Stop scanning
- **Clear List** : Clear the scan result in the list box
- **Information button** : Displays firmware, dll, decoder versions
- M3ScanTest version is indicated at the bottom.

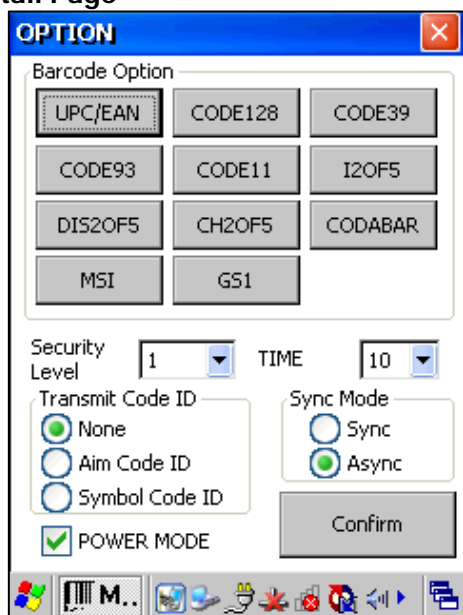
2. Symbolgies Page



- **Symbology and Scan option configuration**
- Enable or disable 21 different types of barcode
- **Scan Mode**
 - **Async** : Emits beam while the scan button is pressed. Limited by the TimeOut.
 - **Sync** : Emits beam for TimeOut period.
- **Read Option**
 - **TimeOut** : Beam emitting duration
 - **Security Level** : Determines how many successful read(s) confirm the result. Ex) 2 means it needs to successfully read the barcode twice to output the result
 - **AIM ID** : Add AIM ID of the barcode at the front of the data.
- **Sound**
 - **Default** : default sound after a successful scan
 - **Beep** : Beeps after a successful scan
 - **No Sound** : No sound after a successful scan

APPLICATION MANUAL

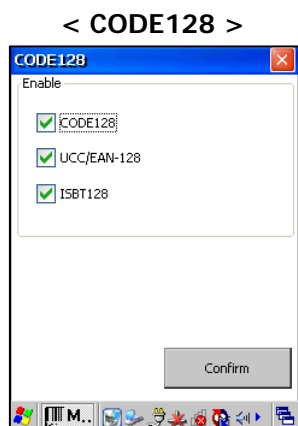
3. Detail Page



- **Advanced configuration for each barcode**
- Enter advanced settings for each barcode type by click on them
- **ScanEngine Option**
 - **Wide Scan** : Controls the width of the beam.
 - **High Filter** : Improved filter of scan engine. Improves accuracy but slows decoding.



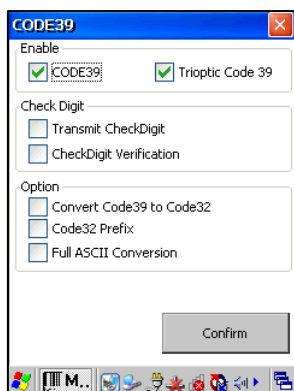
- **ENABLE** : Enable barcode decoding
- **Transmit Check Digit** : Check digit output option
- **Preamble**
 - **No Preamble** : Transmit no preamble.
 - **System Character** : Transmit system character only.
 - **Contry Code** : transmit system character and country code ("0" for USA)
- **Convert**
 - **UPC-E to A** : Convert to UPC-A by inserting '0' in the data
 - **UPC-E1 to A** : Convert to UPC-A by inserting '0' in the data.
 - **EAN-8 to EAN-13** : convert to EAN-13 by adding five zeros at the front of the data



- **CODE128** : Enable CODE128 decoding
- **UCC/EAN-128** : Enable UCC/EAN-128 decoding
- **ISBT128** : Enable ISBT128 decoding

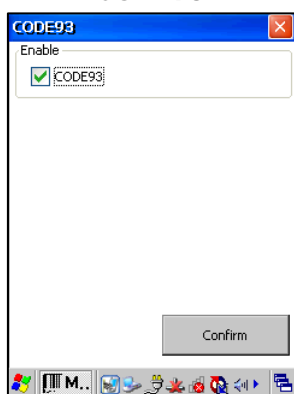
APPLICATION MANUAL

< CODE39 >



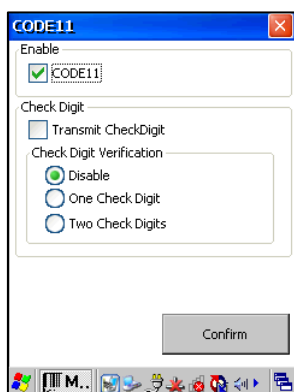
- **ENABLE** : Enable barcode decoding
- **Check Digit**
 - **Check Digit Verification** : Only decodes the barcode with check digit
 - **Transmit Check Digit** : Check digit output option
- **Option**
 - **Convert Conde39 to Code32** : Code39 is decoded as Code32.
 - **Code32 Prefix** : Enable this option to add the prefix character "A" to all Code 32 bar codes. Convert Code 39 to Code 32 (Italian Pharma Code)
 - **Full ASCII Conversion** : Code 39 Full ASCII is a variant of Code 39 which pairs characters to encode the full ASCII character set.

< CODE93 >



- **ENABLE** : Enable barcode decoding

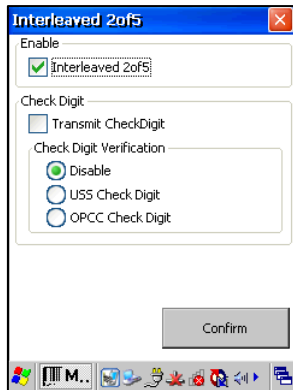
< CODE11 >



- **ENABLE** : Enable barcode decoding
- **Transmit Check Digit** : Check digit output option
- **Check Digit Verification**
 - **Disable** : Ignore the check digit.
 - **One Check Digit** : Only decodes the barcode with one or two check digit
 - **Two Check Digit** : Only decodes the barcode with two check digit

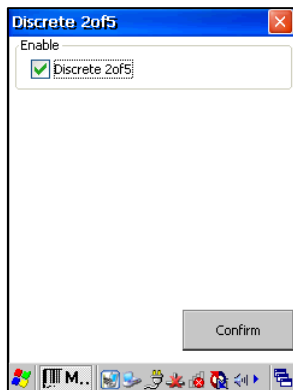
APPLICATION MANUAL

< I2OF5 > (Interleaved 2of5)



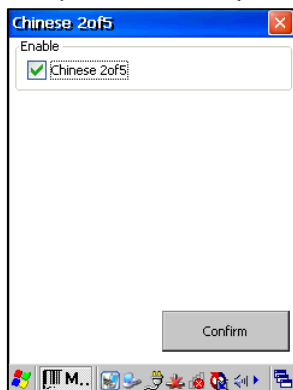
- **ENABLE** : Enable barcode decoding
- **Transmit Check Digit** : Check digit output option
- **Check Digit Verification**
 - **Disable** : Ignore the check digit.
 - **USS Check Digit** : Only decodes the barcode with USS check digit
 - **OPCC Check Digit** : Only decodes the barcode with OPCC check digit

< DIS2OF5 > (Discrete 2of5)



- **ENABLE** : Enable barcode decoding

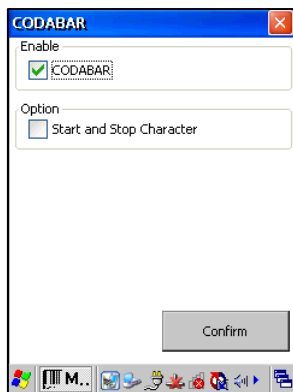
< CH2OF5 > (Chinese 2of5)



- **ENABLE** : Enable barcode decoding

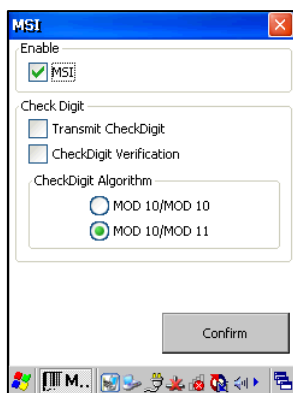
APPLICATION MANUAL

< CODABAR >



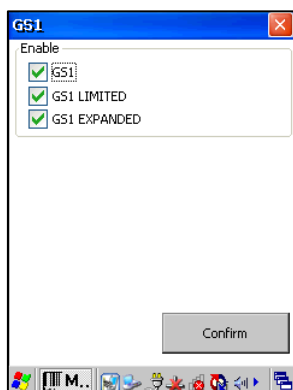
- **ENABLE** : Enable barcode decoding
- **Start and Stop Character** : Outputs start-stop bit of Codabar type barcodes

< MSI >



- **ENABLE** : Enable barcode decoding
- **Check Digit**
 - **Check Digit Verification** : Only decodes the barcode with check digit
 - **Transmit Check Digit** : Check digit output option
- **Check Digit Algorithm** : When the Two MSI check digits option is selected, an additional verification is required to ensure integrity. Select one of the following
 - **MOD 10/MOD 10**
 - **MOD 10/ MOD**

< GS1 >

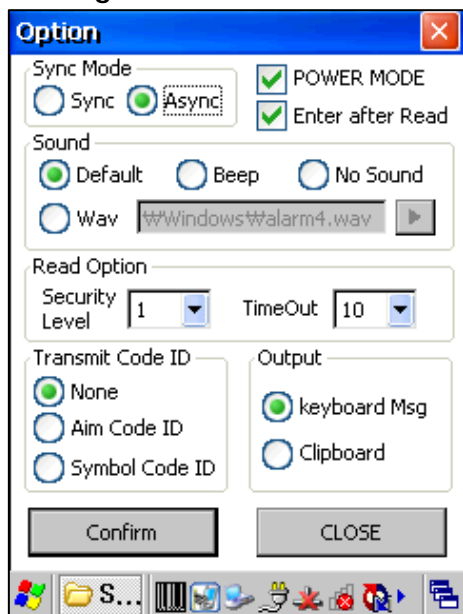


- **ENABLE** : Enable barcode decoding

APPLICATION MANUAL

3.2 ScanEmul.exe

1. Option Page

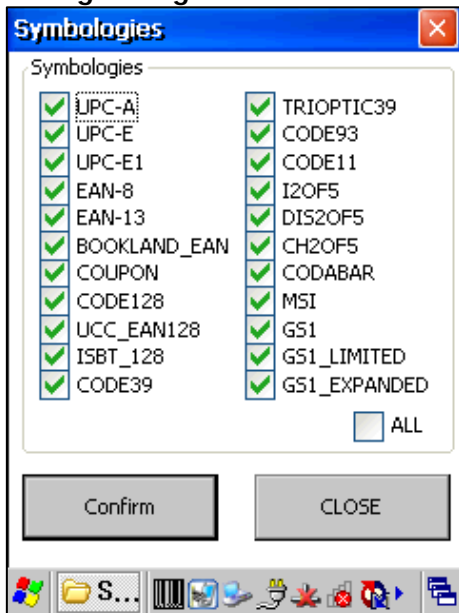


- **SyncMode**
 - **Async** : Emits beam while the scan button is pressed. Limited by the TimeOut.
 - **Sync** : Emits beam for TimeOut period
- **Sound**
 - **Default** : default sound after a successful scan
 - **Beep** : Beeps after a successful scan
 - **No Sound** : No sound after a successful scan
 - **Wav** : user defined wav sound
- **Read Option**
 - **Time Out** : Beam emitting duration
 - **Security Level** : Determines how many successful read output the result.
Ex) 2 means it needs to successfully read the barcode twice to output the result
- **Transmit Code ID**
 - **None** : No transmission
 - **AIM Code ID** : Output AIM ID of the barcode
 - **Symbol Code ID** : Output Symbol ID of the barcode
- **Output**
 - **keyboard Msg** : Outputs the result as keyboard type
 - **Clipboard** : Outputs the result to clipboard
- **Read after Enter** : Send VK_RETURN message after read
- **POWER MODE** : The scanner goes into Sleep power state automatically, and the SLEEP command is not necessary.

APPLICATION MANUAL



2. Symbolologies Page



- Enable or disable 22 different types of barcode

3. Symbology Option

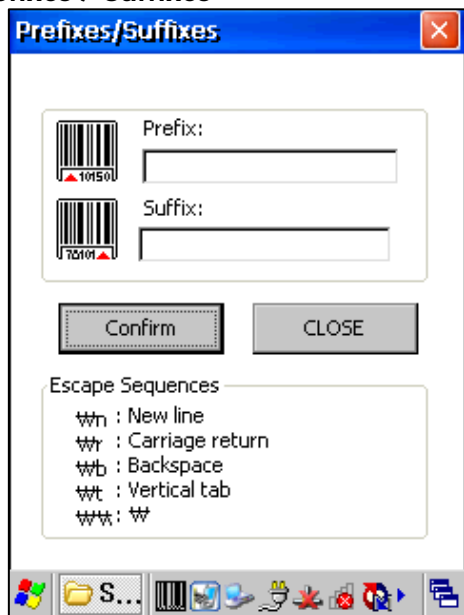


- Advanced configuration for each barcode
- Enter advanced settings for each barcode type by click on them

APPLICATION MANUAL

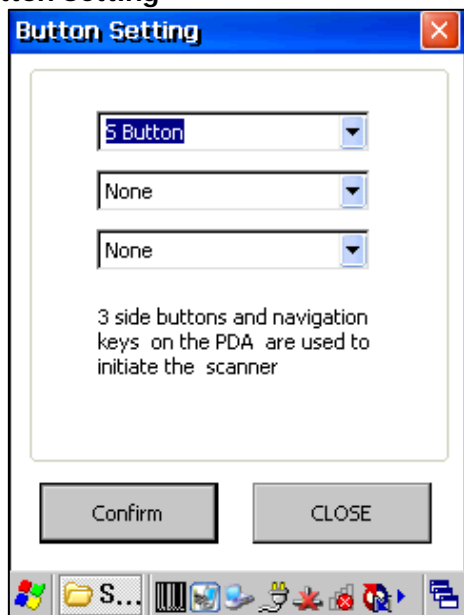


4. Prefixes / Suffixes



- **Prefix** : Enter data or command at the front of barcode data
- **Suffix** : Enter data or command at the end of barcode data
- Cannot enter commands if clipboard output is used

5. Button Setting

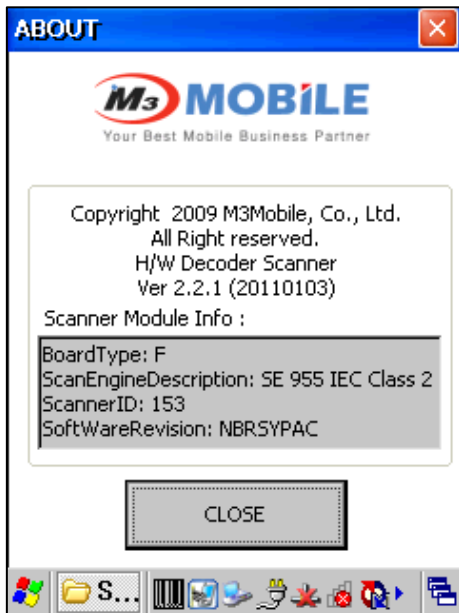


- Support up to 3 keys
- Can use the 4 side keys

APPLICATION MANUAL

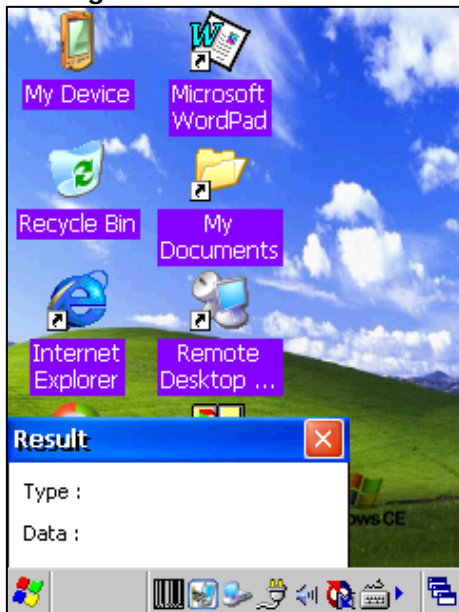


6. About



- Shows versions of
 - ScanEmul
 - ScanEngine Description
 - Software Revision

7. Result Page



- Displays
 - Decoded data
 - Barcode Type

8. Symbology Advance Settings in ScanEmul

It is the same as the option settings shown in the ScanTest.exe section. Please refer to ScanTest.exe section for more details.

APPLICATION MANUAL

CHAPTER 4. IMAGER

Product	Model	Type	OS	Note
GREEN	MC-6X00S	Software Decoder	WinCE 5.0	2D Scanner
T	MC-6700S	Software Decoder	WinCE 5.0	2D Scanner
POS	MC-8800S	Software Decoder	WinCE 5.0	2D Scanner

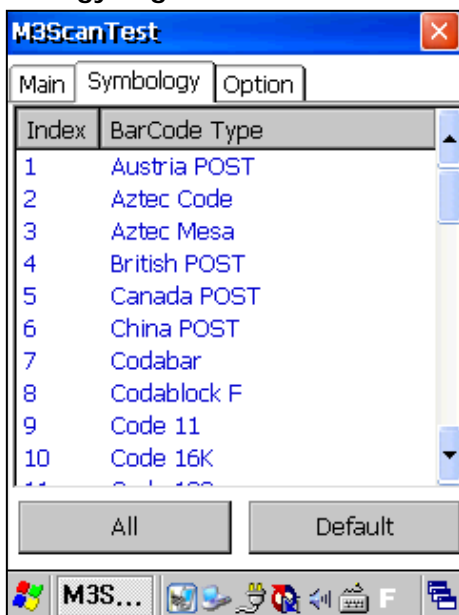
4.1 M3ScanTest.exe

1. Main Page



- **Scan** : Scanning button
- **Clear List** : Clears the scan result in the list box
- **Centering** : Imager Centering Mode
- **Info** : Imager version

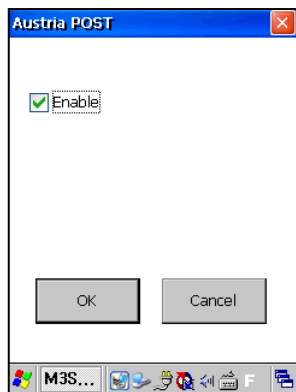
2. Symbolology Page



- **Symbolology Enable/Disable option configuration**
- **All** : Enable all barcode
- **Default** : Sets BarCode as initial values

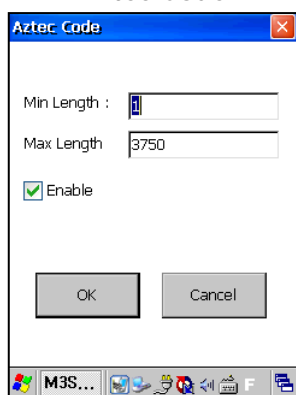
APPLICATION MANUAL

<Austria Post>



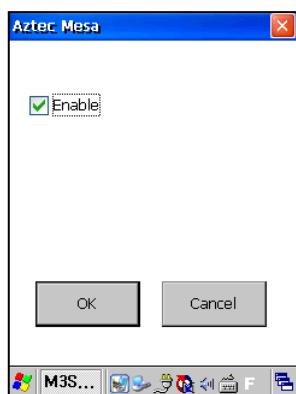
- **Enable** : Enable barcode decoding

< Aztec Code >



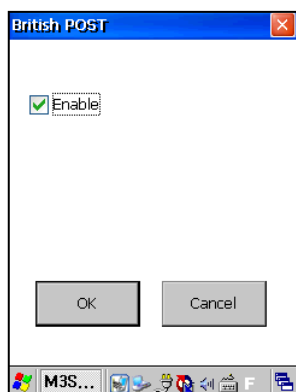
- **Enable** : Enable barcode decoding
- **Min / Max Length** : Minimum and maximum length of the readable data

< Aztec Mesa >



- **Enable** : Enable barcode decoding

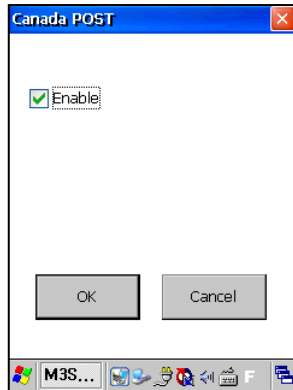
< British Post >



- **ENABLE** : Enable barcode decoding

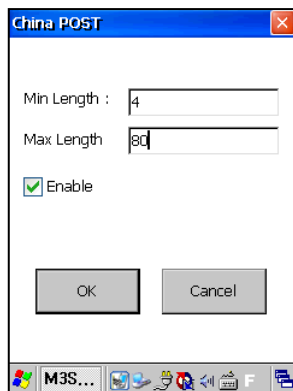
APPLICATION MANUAL

< Canada Post >



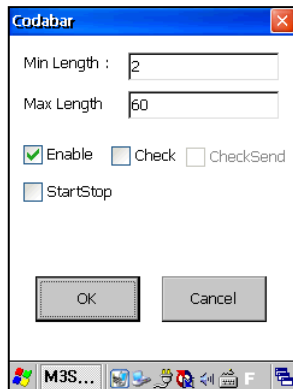
- **Enable** : Enable barcode decoding

< China Post>



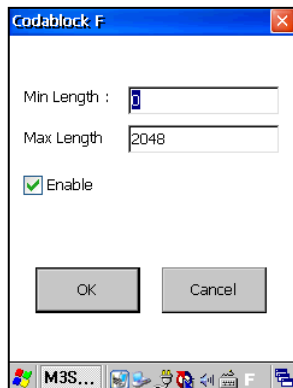
- **Enable** : Enable barcode decoding
- **Min / Max Length** : Minimum and maximum length of the readable data

< Codabar >



- **Enable** : Enable barcode decoding
- **Min / Max Length** : Minimum and maximum length of the readable data
- **Check** : Check Digit
- **CheckSend** : Shows the CheckDigit.
- **StartStop** : Shows the Start-Stop Bit.

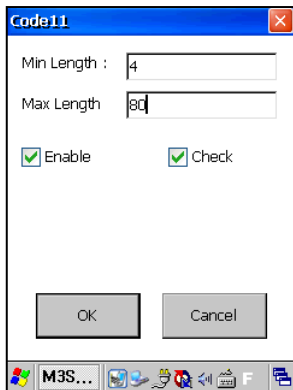
< CodablockF >



- **Enable** : Enable barcode decoding
- **Min / Max Length** : Minimum and maximum length of the readable data

APPLICATION MANUAL

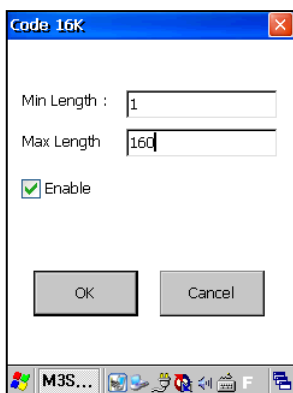
< Code11 >



Code11 configuration dialog box. It has a title bar with 'Code11' and a close button. Inside, there are two text input fields: 'Min Length' with the value '4' and 'Max Length' with the value '80'. Below these are two checked checkboxes: 'Enable' and 'Check'. At the bottom are 'OK' and 'Cancel' buttons. A taskbar at the very bottom shows icons for 'M3S...', a folder, and a file named 'F'.

- **Enable** : Enable barcode decoding
- **Min / Max Length** : Minimum and maximum length of the readable data
- **Check** : Check Digit

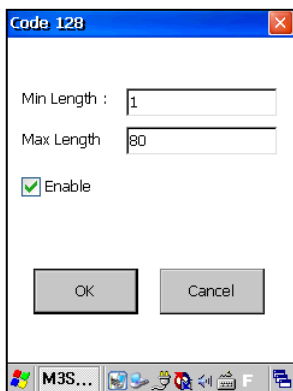
< Code16K >



Code16K configuration dialog box. It has a title bar with 'Code 16K' and a close button. Inside, there are two text input fields: 'Min Length' with the value '1' and 'Max Length' with the value '160'. Below these is one checked checkbox: 'Enable'. At the bottom are 'OK' and 'Cancel' buttons. A taskbar at the very bottom shows icons for 'M3S...', a folder, and a file named 'F'.

- **Enable** : Enable barcode decoding
- **Min / Max Length** : Minimum and maximum length of the readable data

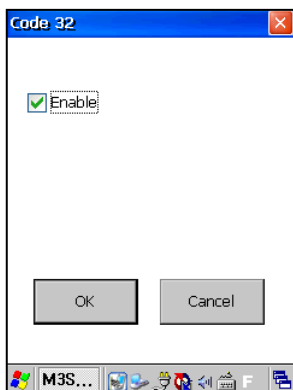
< Code 128 >



Code 128 configuration dialog box. It has a title bar with 'Code 128' and a close button. Inside, there are two text input fields: 'Min Length' with the value '1' and 'Max Length' with the value '80'. Below these is one checked checkbox: 'Enable'. At the bottom are 'OK' and 'Cancel' buttons. A taskbar at the very bottom shows icons for 'M3S...', a folder, and a file named 'F'.

- **Enable** : Enable barcode decoding
- **Min / Max Length** : Minimum and maximum length of the readable data

< Code 32 >

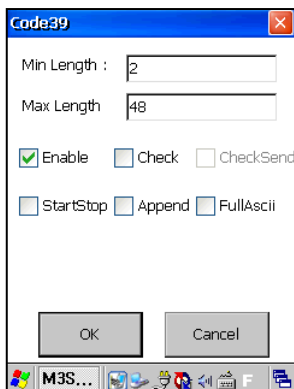


Code 32 configuration dialog box. It has a title bar with 'Code 32' and a close button. Inside, there is one checked checkbox: 'Enable'. At the bottom are 'OK' and 'Cancel' buttons. A taskbar at the very bottom shows icons for 'M3S...', a folder, and a file named 'F'.

- **Enable** : Enable barcode decoding

APPLICATION MANUAL

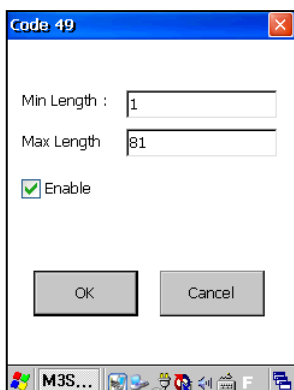
< Code39 >



Code39 configuration dialog box. It includes fields for Min Length (2) and Max Length (48). Checkboxes for Enable (checked), Check, CheckSend, StartStop, Append, and FullASCII are present. OK and Cancel buttons are at the bottom.

- **Enable** : Enable barcode decoding
- **Min / Max Length** : Minimum and maximum length of the readable data
- **Check** : Check Digit
- **CheckSend** : Shows the CheckDigit.
- **StartStop** : Shows the Start-Stop Bit.
- Append
- **FullASCII** : Set up if barcode contains letter

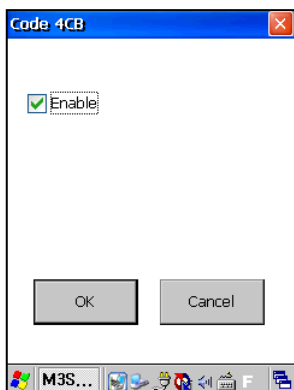
< Code 49 >



Code 49 configuration dialog box. It includes fields for Min Length (1) and Max Length (81). The Enable checkbox is checked. OK and Cancel buttons are at the bottom.

- **Enable** : Enable barcode decoding
- **Min / Max Length** : Minimum and maximum length of the readable data

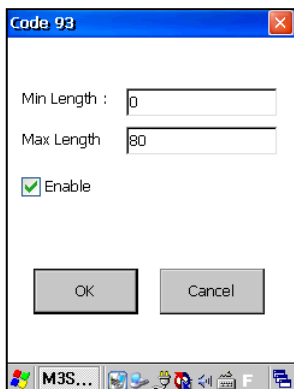
< Code 4CB >



Code 4CB configuration dialog box. It includes a checked Enable checkbox. OK and Cancel buttons are at the bottom.

- **Enable** : Enable barcode decoding

< Code 93 >

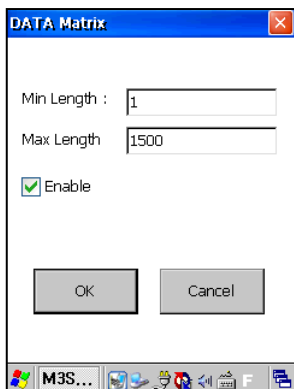


Code 93 configuration dialog box. It includes fields for Min Length (0) and Max Length (80). The Enable checkbox is checked. OK and Cancel buttons are at the bottom.

- **Enable** : Enable barcode decoding
- **Min / Max Length** : Minimum and maximum length of the readable data

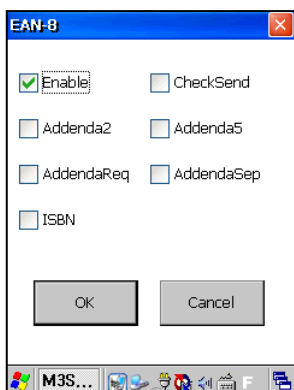
APPLICATION MANUAL

< DATA Matrix >



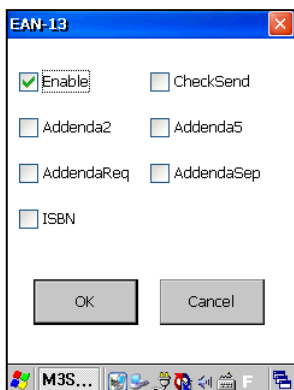
- **Enable** : Enable barcode decoding
- **Min / Max Length** : Minimum and maximum length of the readable data

< EAN-8 >



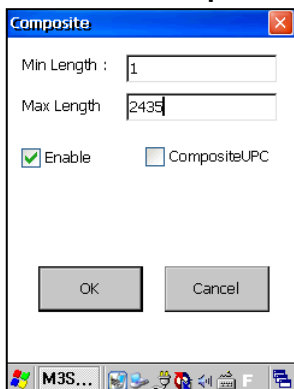
- **Enable** : Enable barcode decoding
- **CheckSend** : Shows the CheckDigit
- **Addenda2** : Add on 2
- **Addenda5** : Add On 5
- AddendaReq
- AddendaSep

< EAN-13 >



- **Enable** : Enable barcode decoding
- **CheckSend** : Shows the CheckDigit
- **Addenda2** : Add on 2
- **Addenda5** : Add On 5
- AddendaReq
- AddendaSep
- **ISBN** : Enable ISBN barcode

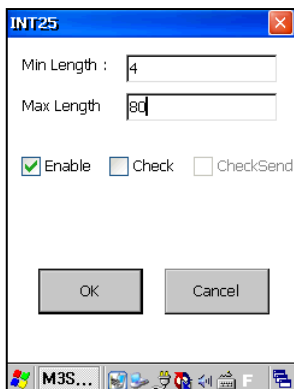
< EAN/UCC Composite >



- **Enable** : Enable barcode decoding
- **Min / Max Length** : Minimum and maximum length of the readable data
- CompositeUPC

APPLICATION MANUAL

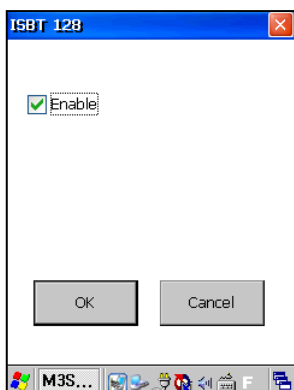
< Interleaved 2of5 >



The INT25 dialog box has a title bar with 'INT25' and a close button. It contains two input fields: 'Min Length' with the value '4' and 'Max Length' with the value '80'. Below these are three checkboxes: 'Enable' (checked), 'Check' (unchecked), and 'CheckSend' (unchecked). At the bottom are 'OK' and 'Cancel' buttons. A taskbar at the very bottom shows icons for 'M3S...', network, volume, and other system utilities.

- **Enable** : Enable barcode decoding
- **Min / Max Length** : Minimum and maximum length of the readable data
- **Check** : Check Digit
- **CheckSend** : Shows the CheckDigit.

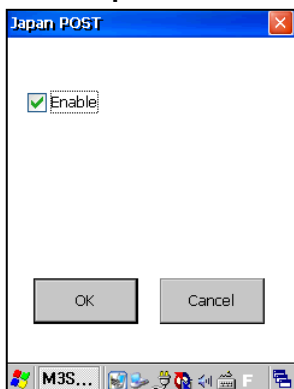
< ISBT 128 >



The ISBT 128 dialog box has a title bar with 'ISBT 128' and a close button. It contains a single checkbox labeled 'Enable' which is checked. At the bottom are 'OK' and 'Cancel' buttons. A taskbar at the very bottom shows icons for 'M3S...', network, volume, and other system utilities.

- **Enable** : Enable barcode decoding

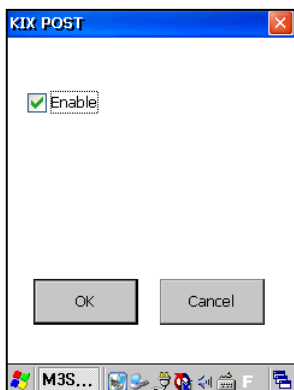
< Japan Post >



The Japan POST dialog box has a title bar with 'Japan POST' and a close button. It contains a single checkbox labeled 'Enable' which is checked. At the bottom are 'OK' and 'Cancel' buttons. A taskbar at the very bottom shows icons for 'M3S...', network, volume, and other system utilities.

- **Enable** : Enable barcode decoding

< KIX Post >

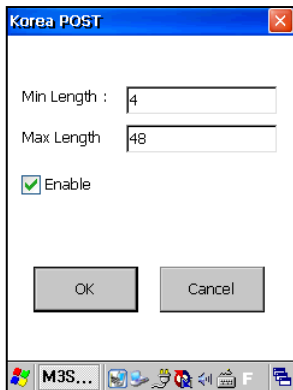


The KIX POST dialog box has a title bar with 'KIX POST' and a close button. It contains a single checkbox labeled 'Enable' which is checked. At the bottom are 'OK' and 'Cancel' buttons. A taskbar at the very bottom shows icons for 'M3S...', network, volume, and other system utilities.

- **Enable** : Enable barcode decoding

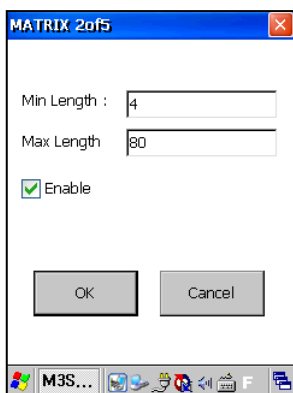
APPLICATION MANUAL

< Korea Post >



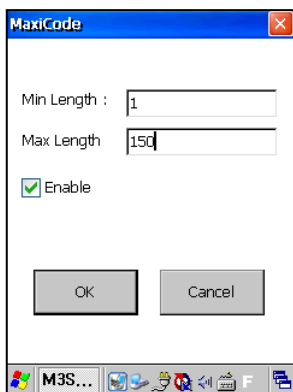
- **Enable** : Enable barcode decoding
- **Min / Max Length** : Minimum and maximum length of the readable data

< MATRIX 2of5 >



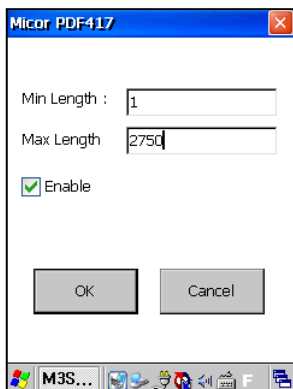
- **Enable** : Enable barcode decoding
- **Min / Max Length** : Minimum and maximum length of the readable data

< MaxiCode >



- **Enable** : Enable barcode decoding
- **Min / Max Length** – Minimum and maximum length of the readable data

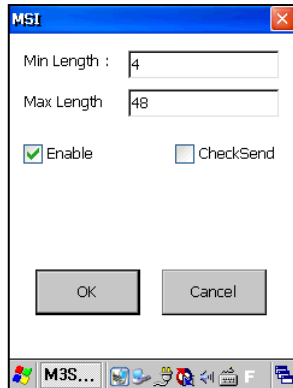
< Micro PDF417 >



- **Enable** : Enable barcode decoding
- **Min / Max Length** : Minimum and maximum length of the readable data

APPLICATION MANUAL

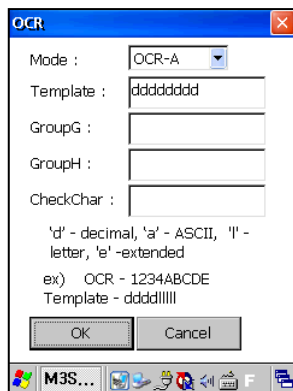
< MSI >



MSI configuration dialog box. It contains two input fields: 'Min Length' with the value '4' and 'Max Length' with the value '48'. Below these are two checkboxes: 'Enable' (checked) and 'CheckSend' (unchecked). At the bottom are 'OK' and 'Cancel' buttons. The taskbar at the bottom shows the 'M3S...' application icon.

- **Enable** : Enable barcode decoding
- **Min / Max Length** : Minimum and maximum length of the readable data
- **CheckSend** : Shows the CheckDigit.

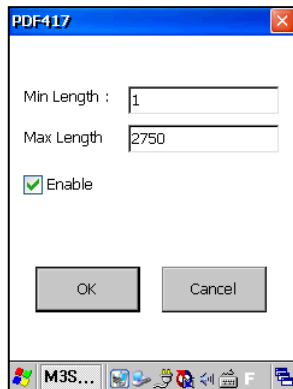
< OCR >



OCR configuration dialog box. It contains a 'Mode' dropdown menu set to 'OCR-A'. Below it are four text input fields: 'Template' (containing 'ddddddddd'), 'GroupG', 'GroupH', and 'CheckChar'. A note below these fields reads: 'd' - decimal, 'a' - ASCII, 'l' - letter, 'e' - extended. An example is provided: 'ex) OCR - 1234ABCDE Template - ddddlllll'. At the bottom are 'OK' and 'Cancel' buttons. The taskbar at the bottom shows the 'M3S...' application icon.

- **Mode** : Disable/ OCR-A/ OCR-B/ OCR-Money/ OCR-Micr
- Template
- GroupG
- GroupH
- CheckChar

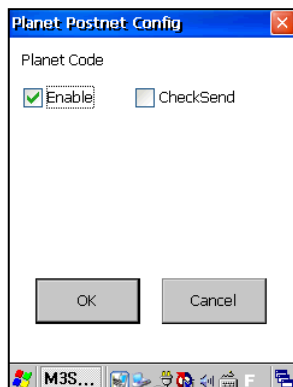
< PDF 417 >



PDF417 configuration dialog box. It contains two input fields: 'Min Length' with the value '1' and 'Max Length' with the value '2750'. Below these is a checked 'Enable' checkbox. At the bottom are 'OK' and 'Cancel' buttons. The taskbar at the bottom shows the 'M3S...' application icon.

- **Enable** : Enable barcode decoding
- **Min / Max Length** : Minimum and maximum length of the readable data

< Planet Code >

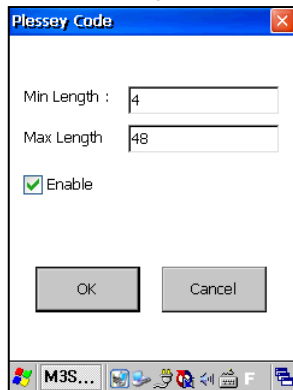


Planet Code configuration dialog box. It contains a checked 'Enable' checkbox and an unchecked 'CheckSend' checkbox. At the bottom are 'OK' and 'Cancel' buttons. The taskbar at the bottom shows the 'M3S...' application icon.

- **Enable** : Enable barcode decoding
- **CheckSend** : Shows the CheckDigit

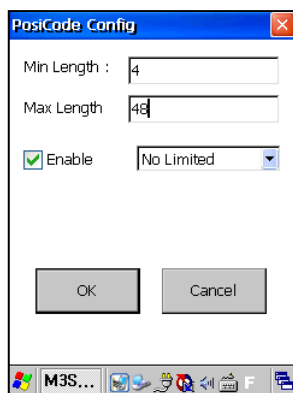
APPLICATION MANUAL

< Plessey Code >



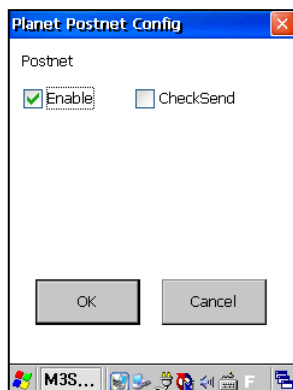
- **Enable** : Enable barcode decoding
- **Min / Max Length** : Minimum and maximum length of the readable data

< PosiCode >



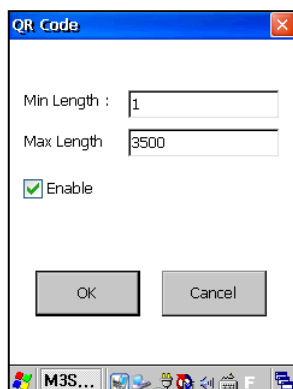
- **Enable** : Enable barcode decoding
- **Min / Max Length** : Minimum and maximum length of the readable data
- No Limited / Limited A / Limited B

< Postnet >



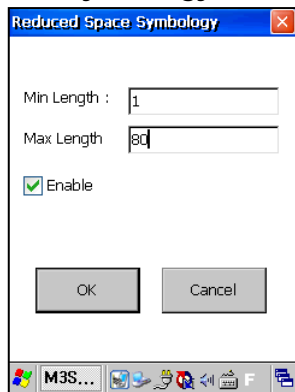
- **Enable** : Enable barcode decoding
- **CheckSend** : Shows the CheckDigit.

< QR Code >



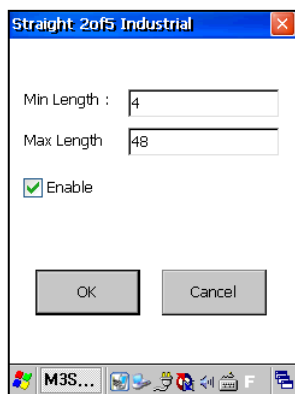
- **Enable** : Enable barcode decoding
- **Min / Max Length** : Minimum and maximum length of the readable data

< Reduced Space Symbology >



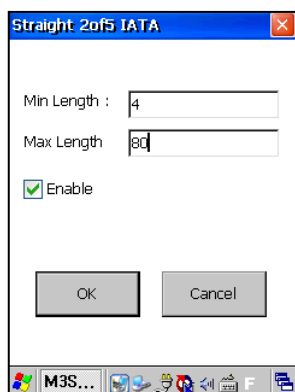
- **Enable** : Enable barcode decoding
- **Min / Max Length** : Minimum and maximum length of the readable data

< Straight 2of5 Industrial >



- **Enable** : Enable barcode decoding
- **Min / Max Length** : Minimum and maximum length of the readable data

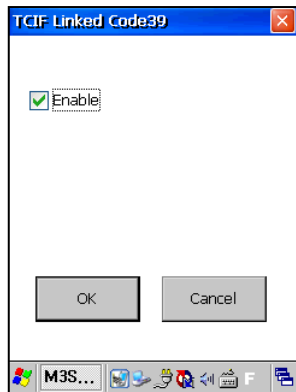
< Straight 2of5 IATA >



- **Enable** : Enable barcode decoding
- **Min / Max Length** : Minimum and maximum length of the readable data

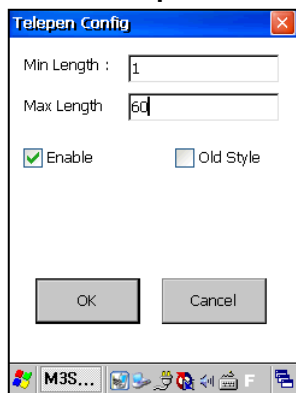
APPLICATION MANUAL

< TCIF Linked Code39 >



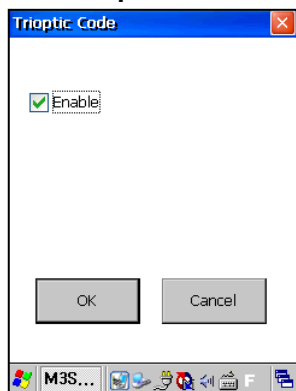
- **Enable** : Enable barcode decoding

< Telepen >



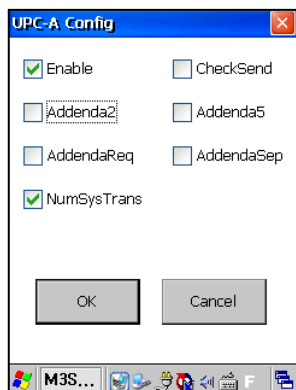
- **Enable** : Enable barcode decoding
- **Min / Max Length** : Minimum and maximum length of the readable data
- **Old Style**

< Trioptic Code >



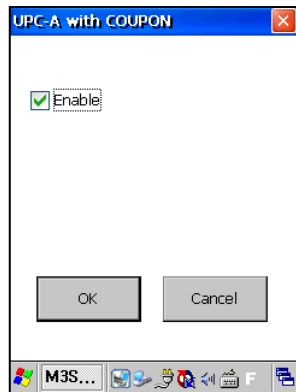
- **Enable** : Enable barcode decoding

< UPC-A >



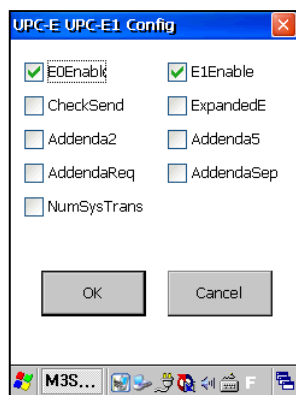
- **Enable** : Enable barcode decoding
- **CheckSend** : Shows the CheckDigit.
- **Addenda2** : Add on 2
- **Addenda5** : Add On 5
- **AddendaReq**
- **AddendaSep**
- **NumSysTrans** : Front most number output option

<UPC-A with COUPON>



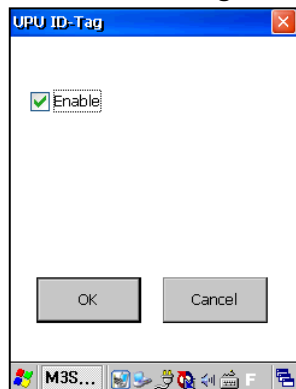
- **Enable** : Enable barcode decoding

< UPC-E >



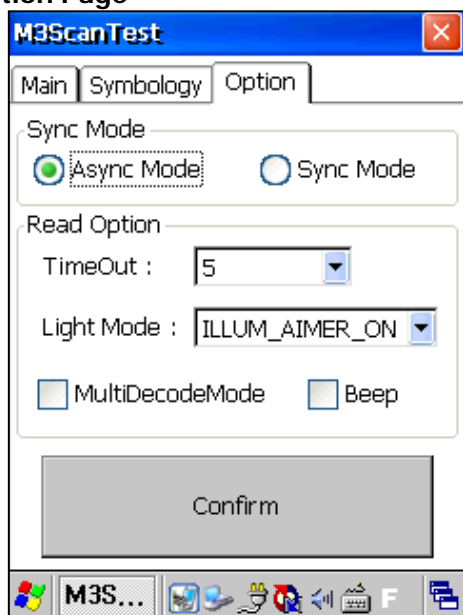
- **Enable** : Enable barcode decoding
- **E1Enable** : UPC-E1 Enable
- **CheckSend** : Shows the CheckDigit.
- **ExpandedE** : Enable expanded UPC-E1
- **Addenda2** : Add on 2
- **Addenda5** : Add On 5
- **AddendaReq**
- **AddendaSep**
- **NumSysTrans** : Front most number output option

< UPC ID-Tag >



- **Enable** : Enable barcode decoding

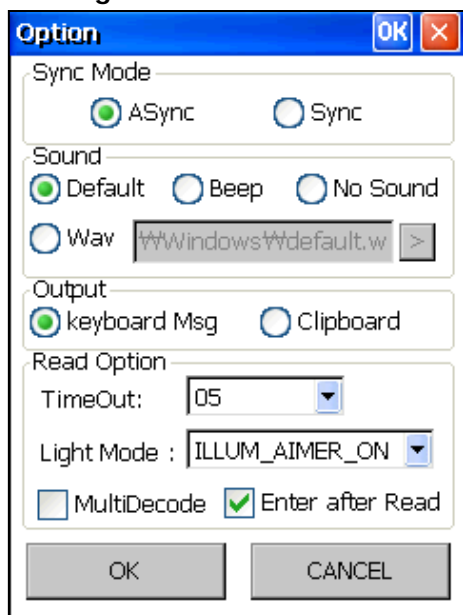
3. Option Page



- **Option configuration**
- **ASync Mode :**
Emits beam while the scan button is pressed.
- **Sync Mode :** Emits beam for Timeout period
- **Sync Timeout :** SyncMode duration
- **Scanner beam option**
 - **ILLUM_AIMER_ON(Default) :**
Emits red background beam and green bar at once
 - **ILLUM_ONLY_ON :**
Emits red background beam only
 - **AIMER_ONLY_ON :** Emits green bar only
 - **ILLUM_AIMER_OFF :** Does not emit any beams
- **MultiDecodeMode :**
Read more than two barcodes at once

4.2 ScanEmul.exe

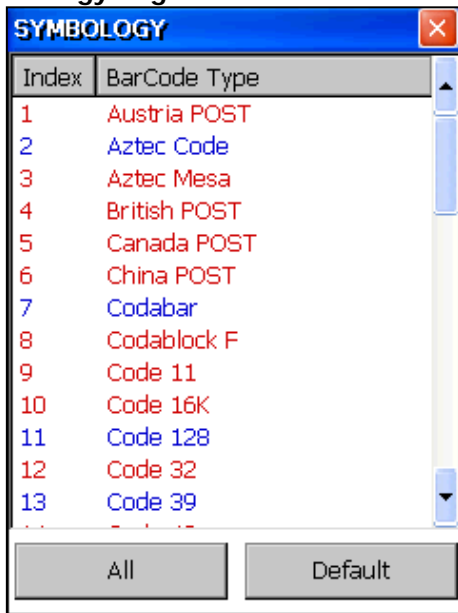
1. Option Page



- **Sync Mode**
 - **ASync** :
Emits beam while the scan button is pressed.
 - **Sync** : Emits beam for Timeout period
 - **ASyncU** : Emits beam while the scan button is pressed but decodes after releasing the scan button
 - **TimeOut** : Beam emitting duration
- **Sound**
 - **Default** : Default sound after a successful scan
 - **No Sound** : No sound after a successful scan
 - **Wav** : Use wav file after a successful scan
- **Output**
 - **keyboard Msg** :
Outputs the result as keyboard type
 - **Clipboard** : Outputs the result to clipboard
- **MultiDecodeMode** :
Read more than two barcodes at once
- **Scanner beam option**
 - **ILLUM_AIMER_ON(Default)** :
Emits red background beam and green bar at once
 - **ILLUM_ONLY_ON** :
Emits red background beam only
 - **AIMER_ONLY_ON** : Emits green bar only
 - **ILLUM_AIMER_OFF** : Does not emit any beams
- **Read after Enter** :
Send VK_RETURN message after read

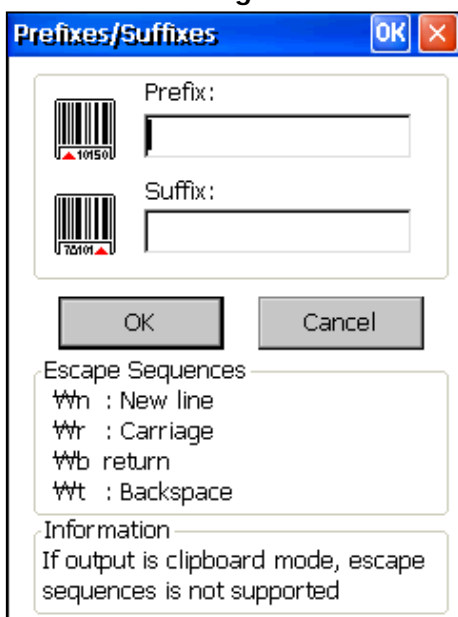
APPLICATION MANUAL

2. Symbology Page



- Enable/Disable several different types of barcode
- **All** : Enable all barcode
- **Default** : Set barCode as initial values
- **Close** : Close symbology page
- It is same with ScanTest option setting.

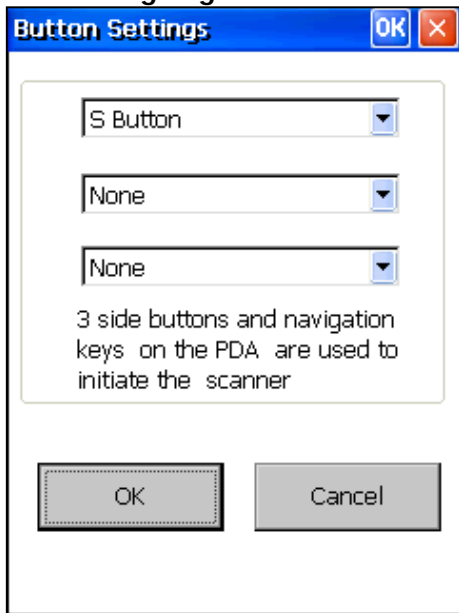
3. Prefixes/Suffixes Page



- **Prefix** :
Input data or command at the front of barcode data
- **Suffix** : Input data or command at the end of barcode

APPLICATION MANUAL

4. Button Setting Page



Button Settings

S Button

None

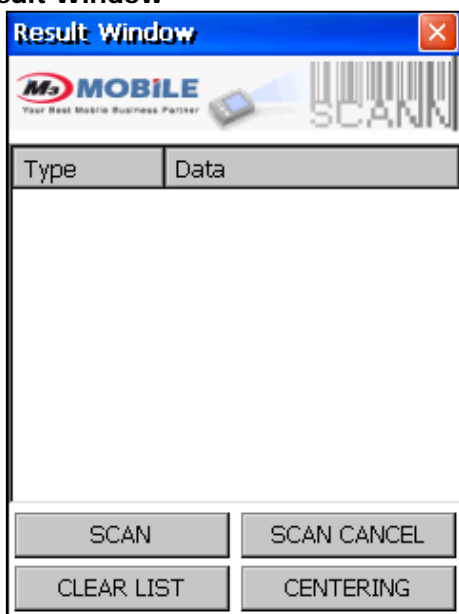
None

3 side buttons and navigation keys on the PDA are used to initiate the scanner

OK Cancel

- Support up to 3 keys
- **Button Setting**
 - S Button
 - C Button
 - LEFT Button
 - UP Button
 - RIGHT Button
 - DOWN Button
 - None

6. Result Window



Result Window

M3 MOBILE
Your Best Mobile Business Partner

SCAN

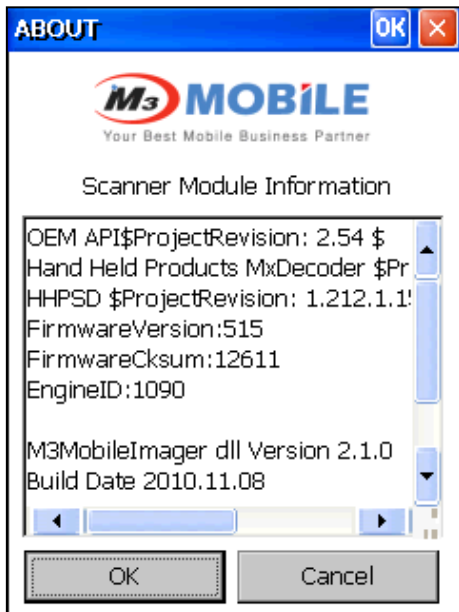
Type	Data
------	------

SCAN SCAN CANCEL
CLEAR LIST CENTERING

- Shows the barcode type and data
- **SCAN** : Scanning button
- **SCAN CANCEL** : Cancel the scanning
- **CLEAR LIST** : Clear the scan result in the list box
- **CENTERING** : Centering mode
- **CLOSE** : Close the scan page

APPLICATION MANUAL

7. About

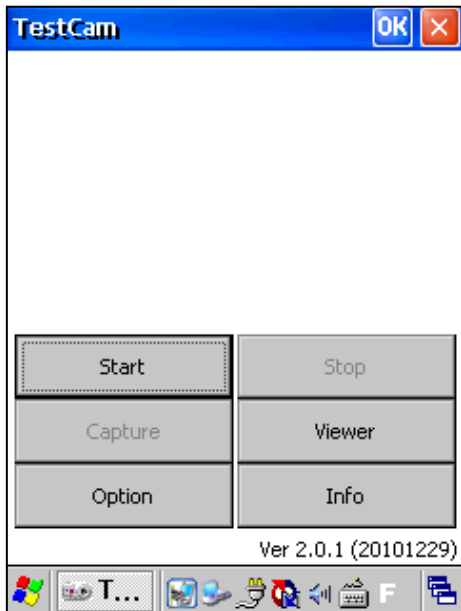


- Shows the Firmware / Dll / Application version.

APPLICATION MANUAL

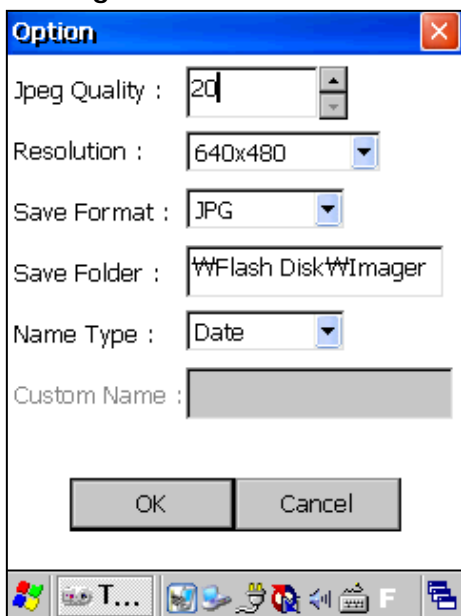
4.3 TestCam.exe

1. Main Page



- **Start** : Starts the Preview
- **Stop** : Stops the Preview
- **Capture** : Saves picture after capturing
- **Viewer** : Shows saved picture
- **Option** : Move to Option Page
- **Info** : Move to Information Page

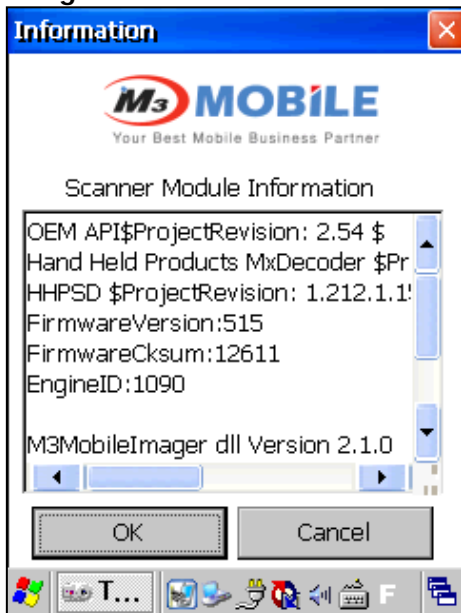
2. Option Page



- **Jpeg Quality** : Set Jpeg Quality
- **Resolution** : Select the resolution of imager
- **Save Format** : Select the save format(Jpg/Bmp)
- **Save Folder** : Set the save path
- **Name Type** : Set the name type
 - **Date** : Auto name format
 - **Custom** : User-defined name format
- **Custom Name** : Set the name if the Name Type is Custom Mode

APPLICATION MANUAL

3. Info Page



- Shows the Firmware/ DLL/ Application version.

APPLICATION MANUAL

CHAPTER 5. CAMERA

Product	Model	Type	OS	Note
GREEN T	MC-6XX0S	2.0M FF / 1.3M FF	Windows CE 5.0	with Camera Module
	MC-6700S	3.0M AF	Windows CE 5.0	with Camera Module

5.1 M3P CameraTest.exe (M3 GREEN only)

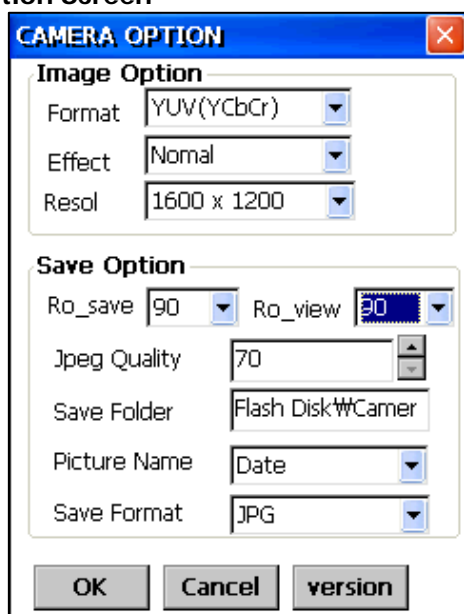
If the PDA is equipped with a camera, camera application can be run by executing Camera.exe in \ Flash Disk \ Camera.

1. Main Screen



- **START** : Starts Preview.
- **STOP** : Stops Preview.
- **CAPTURE** : Captures the preview image.
- **On** : Turns on the flash.
- **Off** : Turns off the flash.
- **Z0, Z1, Z2** : Adjusts the digital zoom level which is available in 2M camera only.
 - **Z0** : No digital zoom
 - **Z1** : Digital zoom level 1
 - **Z2** : Digital zoom level 2.
- **Brightness** : Adjusts the brightness level from 1 to 5. Level 1 is darkest and level 5 is brightest. Available in 2M camera only.
- **OPTION** : Setting for basic options of camera.

2. Option Screen



- **Format** : Select the image format.
- **Effect** : Select the effect when taking photos. Normal, Sepia, BlackWhite, Negative, UvRed, UvBlue and UvGreen are available.
- **Resol (Resolution)** : Set the resolution of photos. 1600 X 1200 is available in 2M camera only.
- **Ro_save (Rotation save)** : Rotates the output when saving photos.
- **Ro_view (Rotation view)** : Rotates the preview image at any angle as much as user wishes.
- **Jpeg Quality** : Choose Jpeg quality of image if Save Format is set as JPG.
- **Save Folder** : Set folder to save image.
- **Picture Name**
 - **Date** : Save as date format
 - **Custom** : Save as user-defined name in Save Folder option
- **Save Format** : Set format of image to save

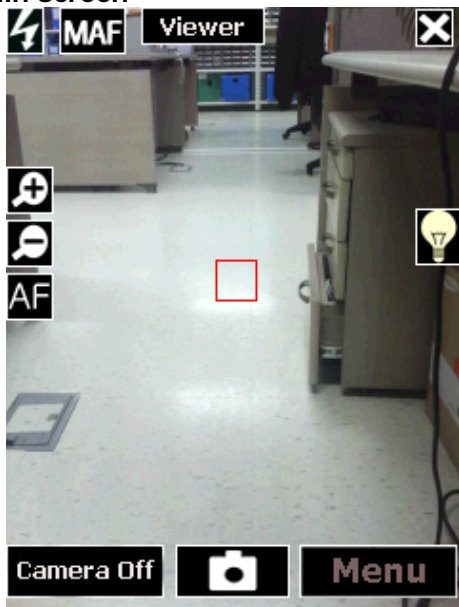
APPLICATION MANUAL



5.2 TestCam.exe (M3 T only)

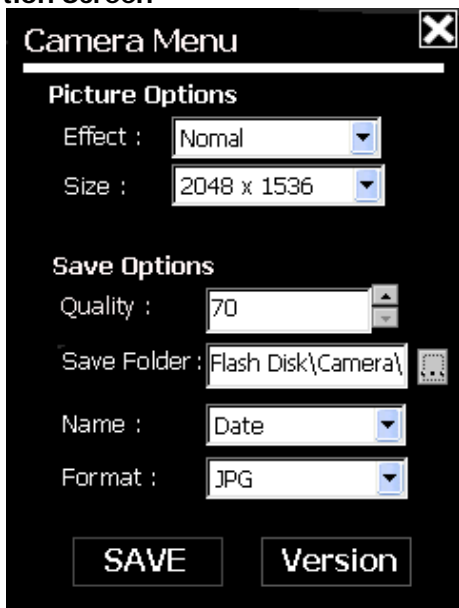
If the PDA is equipped with a camera, camera application can be run by executing Camera.exe in \ Flash Disk \ Camera.

1. Main Screen



- **Camera Off** : Turn off the Preview screen. (Preview On is showed when Preview Off status)
- **Capture** : Takes a photo.
- **Menu** : Sets the basic settings of camera and enables when Preview Off status.
- **Flash** : Turns on flash next to camera module.
- **Zoom in** : Zoom in the image.
- **Zoom out** : Zoom out the image.
- **AF** : Performs AutoFocus function.
- **MAF(Manual Auto Focusing), AAF(Auto Auto Focusing)** : Sets whether to perform AF function by automatically sensing the change of preview image.
- **Viewer** : Runs Viewer to check the taken image. (M3Viewer.exe file must exist at the same folder)
- **Auto Brightness** : Sets the brightness whether to automatically change as change of screen.

2. Option Screen



- **Effect** : Select the effect when taking photos. Normal, Sepia, BlackWhite, Negative, UvRed, UvBlue and UvGreen are available.
- **Size** : Select the image resolution.
- **Quality** : Choose Jpeg quality of image if Save Format is set as JPG.
- **Save Folder** : Set folder to save image.
- **Name** :
 - **Date** : Save as date format
 - **Custom** : Save as user-defined name in Save Folder option
- **Format** : Select the image format.
- **Version** : Check the version of camera program and DLL.
- **Save** : Applies setting values.

APPLICATION MANUAL

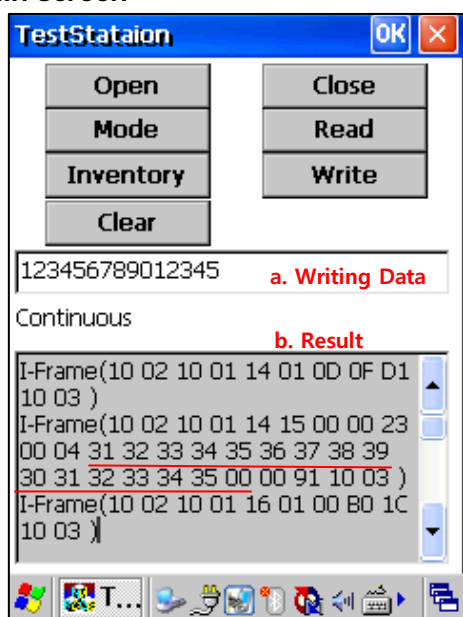
CHAPTER 6. RFID

Product	Model	Type	OS	Note
GREEN	MC-6X10S	13.56MHz	Windows CE 5.0	ISO 15693

6.1 TestStaion.exe

This is the RFID read / write demo SDK program for ISO 15693 tag.

1. Main Screen



- **Open** : Opens RFID Module.
- **Close** : Closes RFID Module.
- **Mode** : Can change the way of data reading according to mode.
 - **Continuous** : Constantly reads data.
 - **Normal** : Reads data once.
- **Read** : Reads the data of RFID tag.
- **Inventory** : Reads the serial number of RFID tag which is affected by Mode.
- **Write** : Writes data to tag's data section.
- **Clear** : Initializes the result of result window.
 - **Writing Data** : Input data to write in tag.
 - **Result** : Outputs the result. If data reading is performed, module shows the result including header, data and tail. Data is underlined part of left image.

6.2 Helpful Tips



■ How is the RFID Specification of M3 GREEN?

RFID Module used in M3Green is CEYON MOD1356C (13.56MHz).

Below table is General Information of RFID.

RFID TYPE	Frequency Band
LFID (Low Frequency Identification)	120 ~ 140 kHz
HFID (High Frequency Identification)	13.56 MHz
UHFID (Ultra High Frequency Identification)	868 ~ 956 MHz

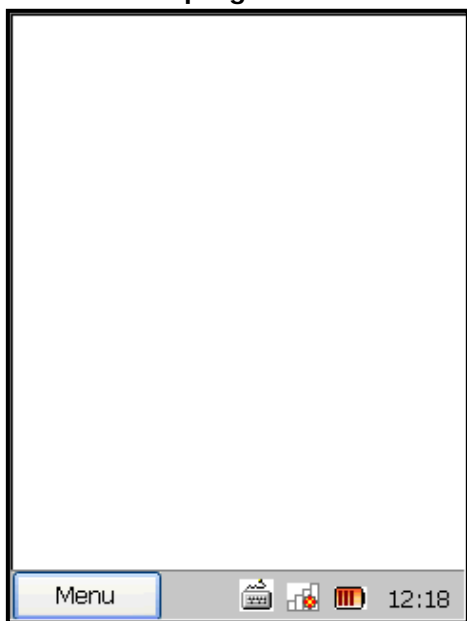
APPLICATION MANUAL

CHAPTER 7. APPCENTER

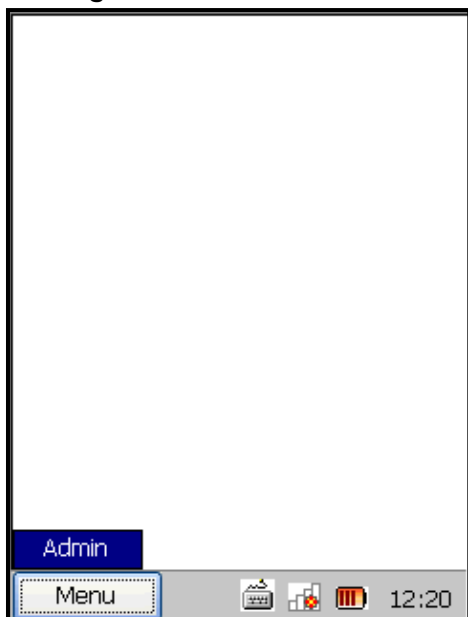
Product	Model	Type	OS	Note
GREEN T	MC-6XX0S	Software	Windows CE 5.0	Kiosk Mode
	MC-6700S	Software	Windows CE 5.0	Kiosk Mode

7.1 AppCenter

1. First view of the program



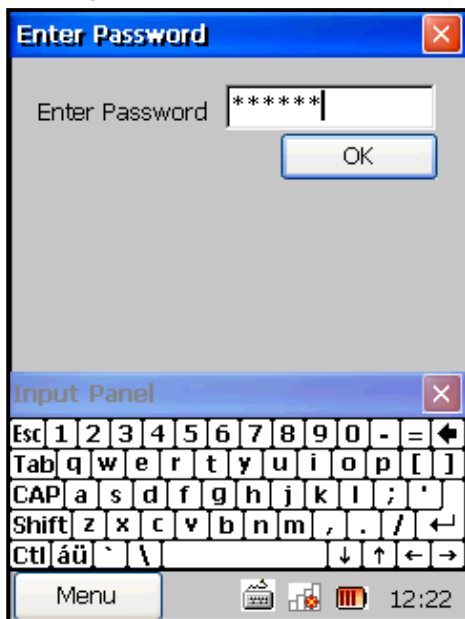
2. Admin Login



- Can activate 'Admin' by clicking 'Menu'.

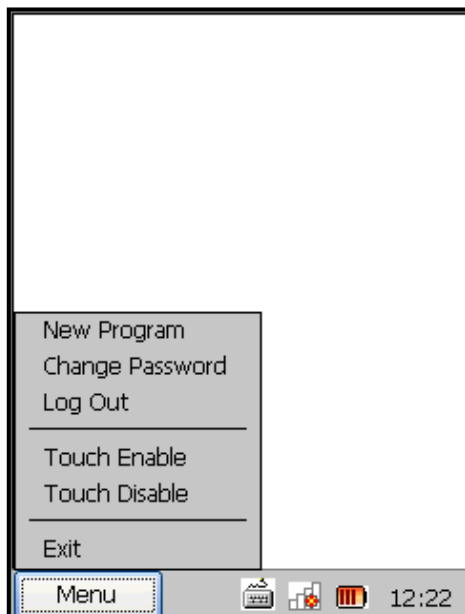
APPLICATION MANUAL

3. Admin Login



- **Enter Password** : Password (Default : mobile)

4. Admin account status

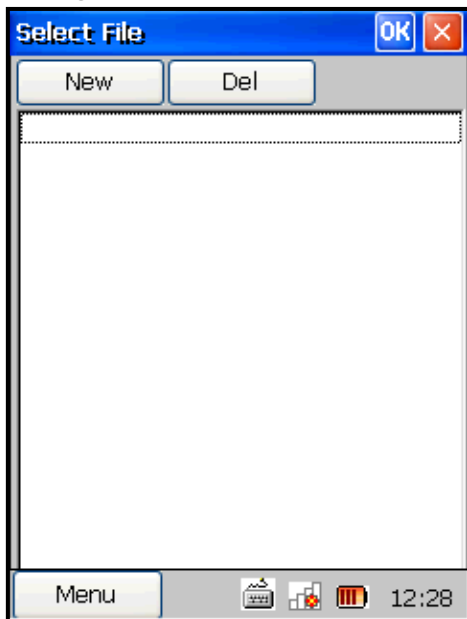


- **New Program** : Select applications you want to register to AppCenter.
- **Change Password** : Change admin account's password.
- **Log Out** : Logs out the admin account.
- **Touch Enable** : Enable to use touch screen of M3 T.
- **Touch Disable** : Disable to use touch screen of M3 T
- **Exit** : Exits AppCenter. (M3 T only)

In M3 T, Admin menu can be launched by Windows Key.

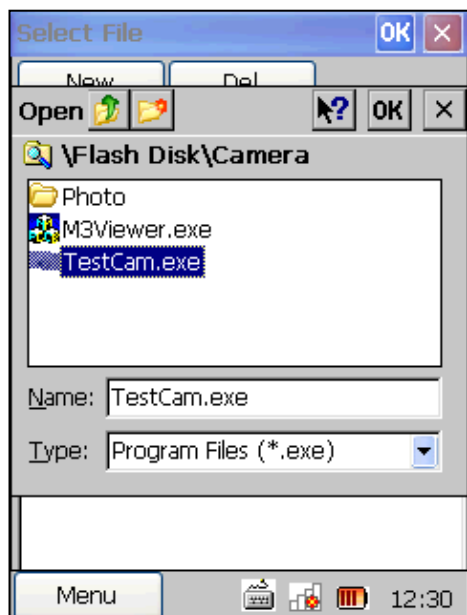
APPLICATION MANUAL

5. New Program



- **New Button** : Select applications you want to register to AppCenter.
- **Del Button** : Removes registered applications.

6. New Program → New



- **FILE SELECT** : Select executable file that you wish to register.

APPLICATION MANUAL

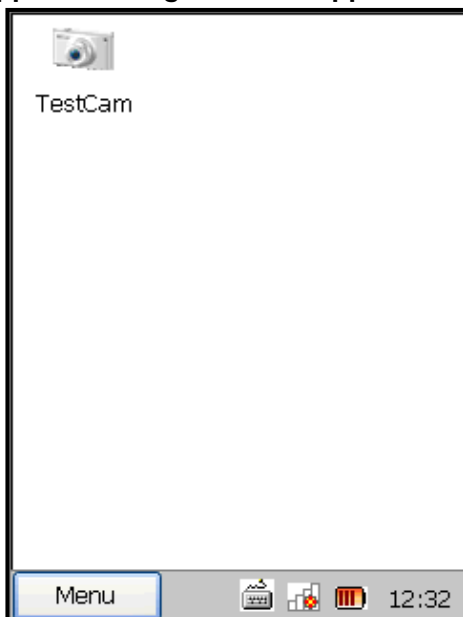


7. New Program



- AppCenter displays the path of the file once you have chosen the file.

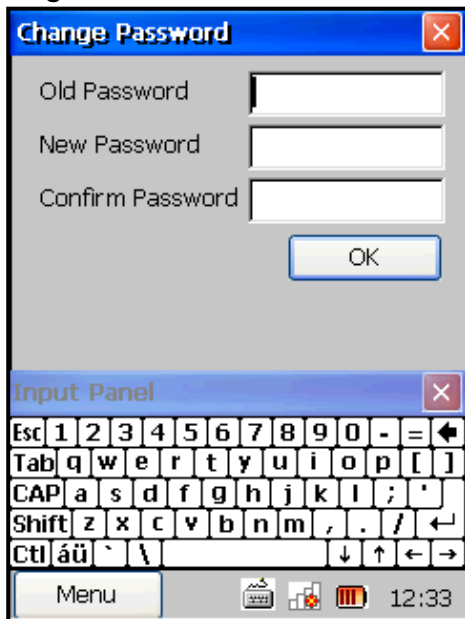
8. Application registered in AppCenter



- Registered application can be launched by clicking the icon.

APPLICATION MANUAL

9. Change Password



The image shows a 'Change Password' dialog box with three input fields: 'Old Password', 'New Password', and 'Confirm Password'. Below these fields is an 'OK' button. At the bottom of the dialog is an 'Input Panel' which contains a virtual keyboard with keys for letters, numbers, symbols, and navigation. The keyboard is organized into rows: Row 1: Esc, 1-0, -, =, Left Arrow; Row 2: Tab, q-w, e-r, t-y, u-i, o-p, [,]; Row 3: CAP, a-s, d-f, g-h, j-k, l-semicolon, apostrophe; Row 4: Shift, z-x, c-v, b-n, m-comma, period, forward slash, Right Arrow; Row 5: Ctl, á-ü, tilde, backslash, space, down arrow, up arrow, left arrow, right arrow. Below the keyboard is a 'Menu' button and a status bar showing icons for a printer, a folder, and a bar chart, along with the time 12:33.

- Changing password dialog.