

hw-2

Direct Card Printer

CX-120



hw-engineering
GmbH & Co. KG
Im Schoenblick 24
73066 Uhingen
Germany
Tel.: +49 (0) 7163/530818
Fax: +49 (0) 7163/530817
www.hw-eng.com
email: info@hw-eng.com

hw MENA
W.L.L.
P.O. Box: 40238
Manama
Kingdom of Bahrain
Tel.: +973 16101267
Fax: +973 17910267
www.hw-eng.com
email: hwmena@hw-eng.com

High Quality
Higher Speed
Highest Reliability

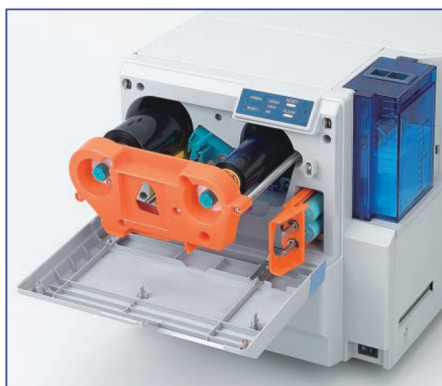
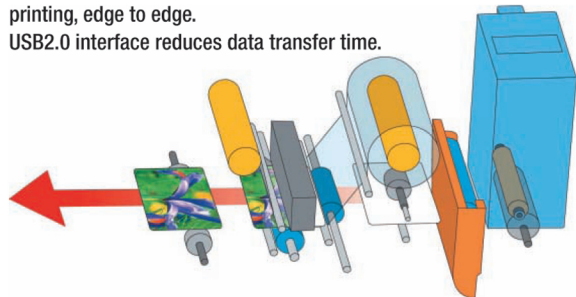
hw-2

Direct Card Printer

High speed printing is achieved by Horizontal Card Feeding

hw-2 printer series adopted an unconventional horizontal card feeding. This method shortens card feeding path and achieves high speed throughput of 20 seconds per card at YMCKO full color printing, edge to edge.

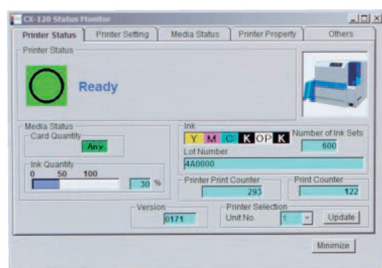
USB2.0 interface reduces data transfer time.



High volume printing with the highest reliability

hw-engineering associates its name only with the most reliable printers.

Whether you print several cards or several ten thousands cards, the hw-2 maintains excellent quality. High capacity YMCKO ribbon containing 750 images reduces the frequency of ink ribbon change.



User Friendliness/Ease of Operation

SMP (Status Monitor Program) shows the printer status and make it possible to change the parameters for printing from your PC.


Detachable card hopper gives you choice of replacing whole hopper or just adding more cards in it according to the type of job you do.



Meet various requirements

Providing more durability and security on the card has become more important issue these days. You can use field up-gradable lamination unit hw-L which gives the fastest single side print & lamination at 40 seconds. In addition, hw-2 offers options for magnetic, chip and contactless chip encoding.

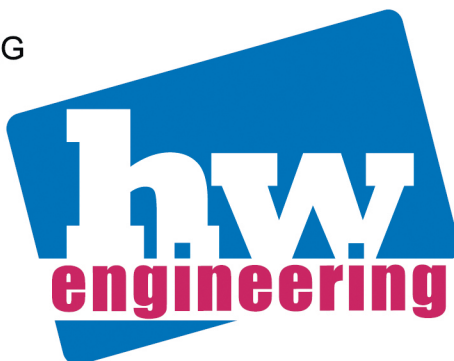
Specification



Printing Method	Dye Sublimation/Resin thermal transfer
Printable Area	Edge to Edge (except for 0.2mm around the corner)
Print Speed	Less than 20 seconds per single side (180 cards/hour) YMCKO full color
Interface	USB2.0 (Hi-Speed)
Dimension	W299×H308×D324mm
Weight	12kg
Resolution	300 dpi
Signal Level	256 levels per color (YMC) 2 levels (Bk)
Hopper Capacity	100 cards (0.76mm thickness)
Stocker Capacity	100 cards (0.76mm thickness)
Ink Ribbon	YMCKO (750 images/roll)
	YMCKOK (600 images/roll)
	K (2,200 images/roll)
Options	Magnetic Stripe Encoding (300/2750 Oersted)
	IC encoding/Contactless IC encoding
	Lamination unit
Safety Standard	CE, UL , FCC Class B, VCCI Class B, ICES-003 Class B

* Due to policy of continuous development, we reserve the right to alter details of specification and equipment without notice.

hw-engineering GmbH & Co. KG
Im Schoenblick 24
73066 Uhingen
Germany
Tel.: +49 (0) 7163/530818
Fax: +49 (0) 7163/530817
www.hw-eng.com
email: info@hw-eng.com



hw MENA W.L.L.
P.O. Box: 40238
Manama
Kingdom of Bahrain
Tel.: +973 16101267
Fax: +973 17910267
www.hw-eng.com
email: hwmena@hw-eng.com