



**IPX4 Certified(with Leather Case)
Compact yet Rugged**

SPP-R200

BIXOLON SPP-R200, a small and lightweight mobile receipt printer. A prudent choice for any mobile receipt printing application where you need fast, on-demand printing with speeds up to 80mm per second (3.15inches/sec). The SPP-R200 also utilizes a long-life Lithium-ion battery with a 8 hour continuous operation life. The magnetic card reader and Smart card reader integrated into the printer allows credit cards to be processed immediately at the point of transaction, increasing customers' sense of security since the credit card does not leave their sight.

HIGHLIGHTS

- Rugged design and small size
 - Damage-resistance to multiple drops of up to 1.2 meters (4 feet)
 - Rubber over-molding
 - IPX4 Class Certified (with Leather Case)
- Faster printing speeds-up to 80mm per second
- Long lasting Lithium-ion battery (7.4V, 1200mAh)
 - Operation: 8 hours
 - Stand-by: 14 hours
- Customer oriented software tools
 - Font download tool (Virtual Memory Switch Manager)
 - NV Image tool (Logo download)
- Easy-to-use
 - One touch cover open and easy paper loading
 - 4 step battery indicator and connectivity status
- Magnetic Stripe Reader (MSR)
 - One touch open (Patent applied)
 - All track conditions supported by Virtual Memory Switch Manager
 - Single track (1st track or 2nd track or 3rd track),
 - Dual track (1st/2nd track or 2nd/3rd track)
 - Triple track (1st/2nd/3rd track)
- Smart Card Reader (SCR)
 - Contact type

OTHER VALUE-ADDED FEATURES

- Various Interface communication and interface capabilities
 - Serial/USB - Bluetooth with high communication speed (115,200 bps)
- Intuitive LEDs
- Portable device suited for outdoor usage
 - Belt Strap (standard) - Leather Case (Option)
- 30 code pages included in the standard firmware (no update necessary, to be set by VMSM)
- 203 dpi printing
- Selectable color of hinge (Orange/Black)
- Software development kit / Windows driver / OPOS driver / Windows CE driver / Symbian SDK supported



SPP-R200

SPP-R200M (with MSR)

SPP-R200S (with SCR)

PRODUCT FEATURES

Rugged Design and Small Size

Uniquely designed for harsh outdoor environments, and handheld size the SPP-R200 is ideal for printing delivery receipts and invoices on the go.



Damage-resistance material
Rubber over-molding



Handheld size

Fast Printing Speed

To speed up customer transactions without sacrificing performance, the SPP-R200 prints texts and graphics at a consistent speed of 80mm per second. Reduced data processing time has been achieved by utilizing a more powerful CPU; increases in performance have been made by upgrading mechanical components and optimizing software.

- CPU : 32 bit
- Flash Memory : 16 Mbit (NV Image: 256KBytes)
- RAM : 64 Mbit (SDRAM)
- Buffer : 128 KByte

Long lasting Lithium-ion Battery (7.4V 1,200mAh)

The SPP-R200 utilizes a long-life lithium-ion battery with a 8 hours operation life of 203 dpi (8dots/mm) thermal printing on a single charger.

- Operation hours: 8 hours
- Standby hours: 14 hours

Magnetic Stripe Reader (MSR) and Smart Card Reader (SCR)

The Magnetic card reader and Smart card reader integrated into the printer allows credit cards to be processed immediately at the point of transaction, increasing the customers' sense of security since the credit card does not leave their sight.

- One touch open (Patent applied) : SPP-R200M
- Triple (Track 1-2-3) track supported (Standard) : SPP-R200M
- Contact type of Smart Card Reader (SCR) : SPP-R200S



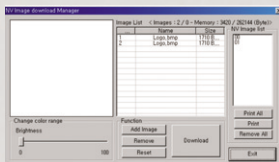
Magnetic Stripe Reader(MSR)



Smart Card
Reader (SCR)

User-friendly Software Tools

The SPP-R200 is supported by a rich pool of utility software. NV image tool and Virtual Memory Switch Manager (VMSM) are available with more software being added in the future. These new customer oriented utilities enable the users to directly access logo download, code page selection, and the other printer settings more.



SPECIFICATIONS

PRINT

- PRINT METHOD : Direct thermal
- PRINT SPEED : 80mm/sec (3.15 inch/sec)
- RESOLUTION : 203 dpi (8 dots/mm)
- CHARACTER SIZE : Font A : 12 x 24 , Font B : 9 X 24,
Korean : 24 X 24, Chinese : 24 X 24
- CHARACTER PER LINE : Font A : 32, Font B : 42,
Korean : 16, Chinese : 16
- CHARACTER SET : Alphanumeric character : 95
Extended character : 128 x 30 pages
International character : 32

BARCODES

- 1D : EAN-13, EAN-8, Code 39, Code 93,
Code 128, ITF, Coda Bar, UPC-A, UPC-E
- 2D : PDF417, QR code, Data Matrix, Maxicode

PAPER

- PAPER WIDTH : 58 ± 0.5 mm
- PAPER ROLL DIAMETER : Max. ø40 mm
- SUPPLY METHOD : Easy paper loading

RELIABILITY

- PRINTER UNIT : 35,000,000 lines
- TPH : 120 km
- BATTERY : 500 cycles rechargeable

INTERFACE : Bluetooth, USB, RS-232C

RECEIVE BUFFER : 128 Kbytes

NV IMAGE : 256 Kbytes

USER DEFINE BUFFER : 8 Kbytes

EMULATION : ESC / POST™

DRIVER : Windows SDK, Windows Driver,
OPOS Driver, Windows CE Driver, Symbian SDK

SENSOR : Paper End Sensor, Paper Cover Open Sensor

LANGUAGE : Buyer Language Supported

WEIGHT (g) : 184

(lbs) : 0.41

DIMENSION : 79.5 x 126.7 x 43.6 (W X L X H mm)

OPERATING TEMPERATURE : -10~50°C

BATTERY

- TYPE : Lithium-ion
- OUTPUT : Voltage - 7.4 VDC / Capacity - 1200 mAh
- CHARGING TIME : 2.5hrs

BATTERY CHARGER

- INPUT : Voltage - AC 100-250
- OUTPUT : Voltage - DC 8.4V / Current - 0.8A

OPTION

- BATTERY PACK : PBP-R200
- BATTERY CRADLE : PBD-R200
- CIGARETTE LIGHTER JACK CHARGER : PCC-R200
- LEATHER CASE : PLC-R200
- INTERFACE CABLE (SERIAL) : PIC-R200S
- INTERFACE CABLE (USB) : PIC-R200U
- INTERFACE CABLE (SERIAL + USB) : PIC-R200SU
- VEHICLE HOLDER : PVH-R200

BIXOLON® www.bixolon.com

This publication contains product descriptions without obligation.
All features and specifications are subject to change without notice. October 2010

BIXOLON Headquarters

Address #A-5F, Digital Empire Building, 980-3,
Yeongtong-dong, Yeongtong-gu, Suwon-si,
Gyeonggi-do, 443-702, Korea
Tel +82 (0) 31 218 5500 Fax +82 (0) 31 218 5589
E-mail sales@bixolon.com

BIXOLON America Inc.

Address 3171 Fujita St Torrance,
CA 90505
Tel +1 858 764 4580 Fax +1 310 257 6869
E-mail sales@bixolonusa.com

BIXOLON Europe GmbH

Address Tiefenbroicher Weg 35,
40472 Düsseldorf
Tel +49 211 68 78 54 0 Fax +49 211 68 78 54 20
E-mail sales@bixolon.de

BIXOLON Dongguan

Address #5 Luyi 2 Road, Tangxia Town,
Dongguan City, Guangdong Province, P.R.China
Tel +86 769 8262 0704 Fax +86 769 8262 0703
E-mail sales@bixolon.com