
5.5" Rugged IoT Handheld Device with Quad-core Processor

User Manual

使用手冊



Copyright Notice

All Rights Reserved.

This document contains proprietary information protected by copyright. All rights are reserved. No part of this manual may be reproduced by any mechanical, electronic, or other means in any form without prior written permission of the manufacturer.

Disclaimer

The information in this document is subject to change without prior notice in order to improve the reliability, design and function. It does not represent a commitment on the part of the manufacturer.

Under no circumstances will the manufacturer be liable for any direct, indirect, special, incidental, or consequential damages arising from the use or inability to use the product or documentation, even if advised of the possibility of such damages.

Federal Communications Commission (FCC) Statement

15.21

You are cautioned that changes or modifications not expressly approved by the part responsible for compliance could void the user's authority to operate the equipment.

15.105(b)

This equipment has been tested and found to comply with the limits for a Class B digital device, pursuant to part 15 of the FCC rules. These limits are designed to provide reasonable protection against harmful interference in a residential installation. This equipment generates, uses and can radiate radio frequency energy and, if not installed and used in accordance with the instructions, may cause harmful interference to radio communications. However, there is no guarantee that interference will not occur in a particular installation. If this equipment does cause harmful interference to radio or television reception, which can be determined by turning the equipment off and on, the user is encouraged to try to correct the interference by one or more of the following measures:

- Reorient or relocate the receiving antenna.
- Increase the separation between the equipment and receiver.
- Connect the equipment into an outlet on a circuit different from that to which the receiver is connected.
- Consult the dealer or an experienced radio/TV technician for help.

This device complies with Part 15 of the FCC Rules. Operation is subject to the following two conditions:

- 1) this device may not cause harmful interference and
- 2) this device must accept any interference received, including interference that may cause undesired operation of the device.

FCC RF Radiation Exposure Statement:

For body worn operation, this phone has been tested and meets FCC RF exposure guidelines when used with an accessory that contains no metal and that positions the handset a minimum of 1.5 cm from the body. Use of other accessories may not ensure compliance with FCC RF exposure guidelines.

NCC警語：

根據NCC低功率電波輻射性電機管理辦法 規定：第十二條 經型式認證合格之低功率射頻電機，非經許可，公司、商號或使用者均 不得擅自變更頻率、加大功率或變更原設計之特性及功能。

第十四條 低功率射頻電機之使用不得影響飛航安全及干擾合法通信；經發現有干擾現象時，應立即停用，並改善至無干擾時方得繼續使用。前項合法通信，指依電信法規定作業之無線電通信。低功率射頻電機須忍受合法通信或工業、科學及醫療用電波輻射性電機設備之干擾。

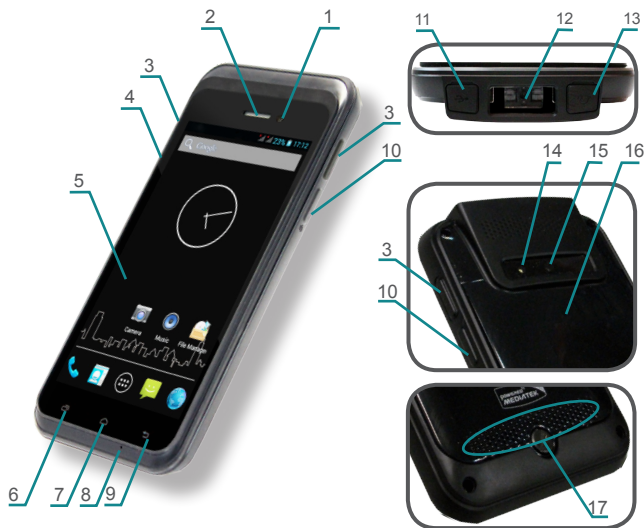
「減少電磁波影響，請妥適使用」。


「SAR標準值2.0W/Kg；SAR實測值為：0.222W/Kg」。

「EMC品質符合CNS13438限制值，充電線組限用原廠含鐵粉芯、1米長之隔離線USB Cable」。

Open Your Box

- ▶ Rugged IoT Handheld Device
- ▶ Rechargeable Li-ion battery pack (Pre-installed)
- ▶ Standard USB cable
- ▶ Universal power adapter
- ▶ Earphone
- ▶ User Manual



- | | |
|--------------------|--|
| 1 Front camera | 10 Power key  |
| 2 Receiver | * Press-and-hold this key to power on/off the computer. |
| 3 Scan key | * Press this key to turn on/off the display. |
| 4 Volume rocker | 11 USB connector with rubber cover |
| 5 Touch screen | 12 Scan window |
| 6 (OS) Menu button | 13 Headset jack with rubber cover |
| 7 (OS) Home button | 14 LED Flash |
| 8 Microphone | 15 Rear camera |
| 9 (OS) Back button | 16 Battery chamber |
| | 17 Speaker |

Battery Chamber

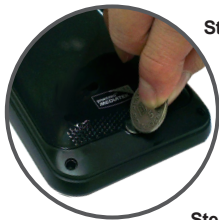


The Dual-SIM slots, microSD card slot, and battery are all located inside the battery chamber. To access these components, remove the battery cover.

Manually undo the retaining screw to gain access to the battery chamber.

Battery cover retaining screw

To remove battery cover:



Step 1:

Loosen the retaining screw on the battery cover with a coin.

Step 2:

Detach and remove the battery cover.

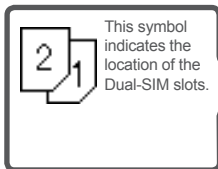


Step 3:

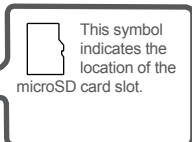
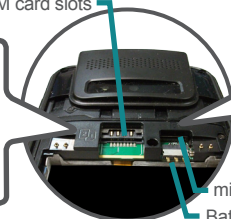
After the battery cover is removed, the microSD card slot and Dual-SIM slots are located inside the battery chamber.

Install SIM & microSD Cards

Double-stacked SIM card slots



This symbol indicates the location of the Dual-SIM slots.



This symbol indicates the location of the microSD card slot.

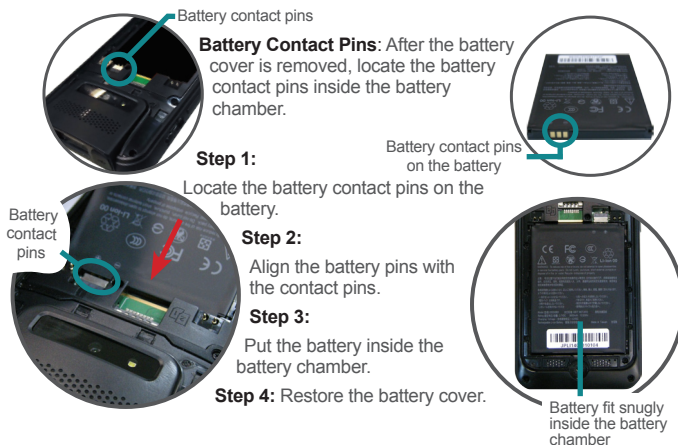
Step 1: Orientate the SIM cards and microSD card as the symbol directs.

Step 3: Restore the battery cover.

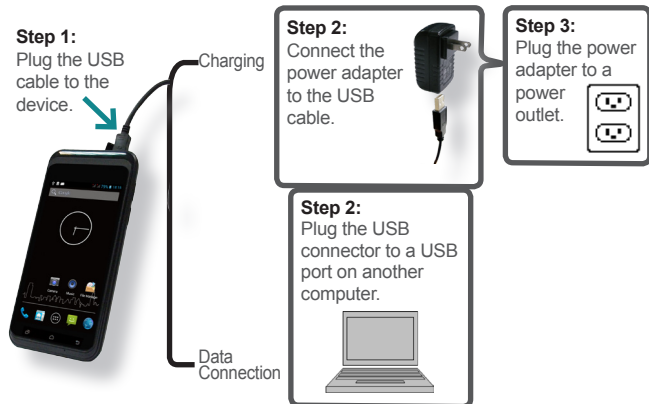
Step 2: Insert the SIM cards and microSD Card into the slots.

Caution: Remove the battery before SIM/microSD card installation to prevent from damage.

Install Main Battery

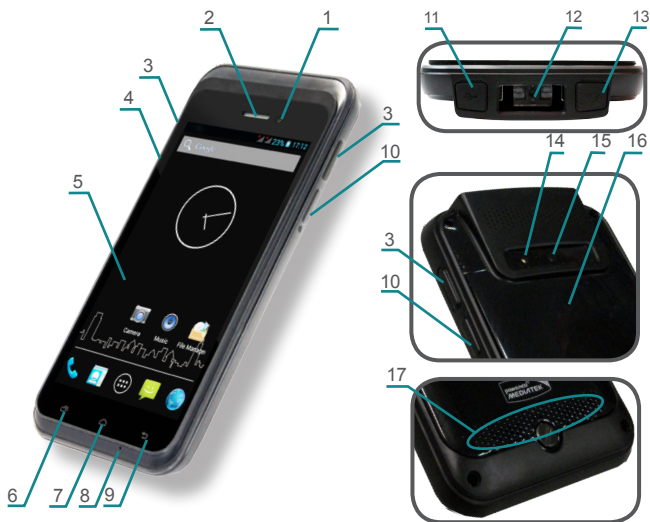


Charging & Data Connection



認識您的裝置

- ▶ 強固式物聯網手持裝置
- ▶ 抽換式鋰電池
- ▶ 標準USB傳輸/充電線
- ▶ 充電器
- ▶ 耳機
- ▶ 使用手冊



- | | |
|-------------|----------------|
| 1 前置相機 | 10 電源鈕 |
| 2 聽筒 | * 長按關閉/開啟裝置 |
| 3 條碼掃描鍵 | * 按一下關閉/開啟螢幕 |
| 4 音量鍵 | 11 USB插孔(含保護蓋) |
| 5 觸控螢幕 | 12 條碼掃描器 |
| 6 (系統) 功能鍵 | 13 耳機插孔(含保護蓋) |
| 7 (系統) 主螢幕鍵 | 14 LED 閃光燈 |
| 8 話筒 | 15 後置相機 |
| 9 (系統) 返回鍵 | 16 電池被蓋 |
| | 17 揚聲器 |

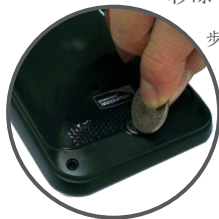
電池背蓋開啟方式



開啟電池背蓋後，即可見雙sim卡槽，microSD卡槽與電池都在其中。

要使用這些插槽，必須要開啟電池蓋。

移除電池蓋：



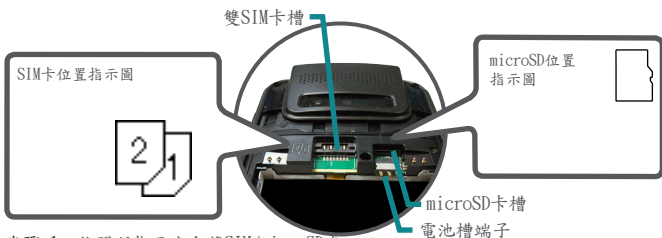
步驟1 用硬幣來旋鬆螺絲

步驟2 移除電池蓋

步驟3 取下電池蓋後即可使用SIM卡槽和microSD卡槽



安裝SIM卡及microSD記憶卡



步驟 1: 依照所指示方向將SIM/microSD卡對準插槽。

步驟 2: 將SIM/microSD卡插入

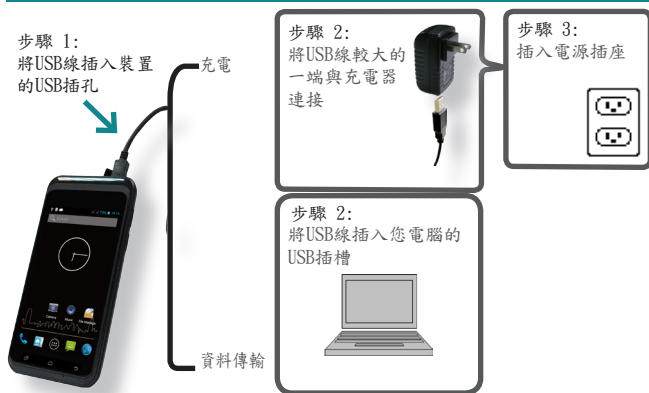
步驟 3: 裝上電池以及背蓋

注意：先取下電池，再插拔SIM卡以及microSD卡以免損傷機器或卡。

安裝電池



充電及資料傳輸



產品規格

產品額定電壓 / Rating Voltage: D.C. 5V

產品額定電流 / Rating Current: 1.5A

充電溫度範圍 / Charge temp.: 0-40°C

操作溫度範圍 / Operate temp.: -20-60°C

防水防塵等級 / water and dust-proof.: IP65

請注意以下要求!!

1. 請更換相同型號之電池以免產生爆炸的風險
2. 使用過之廢電池請依當地政府單位要求處理
3. 不得拆解、開啟、短路或撕裂二次單電池或電池組
4. 不得使單電池或電池組曝露於熱或火源。避免存放在陽光直射處。
5. 當單電池發生洩漏時，不得使液態電解質接觸皮膚或眼睛。
若不慎接觸時請以大量清水沖洗換部並尋求醫療協助。
6. 不得使用任何非設計搭配設備使用支單電池或電池組。
7. 二次單電池與電池組需於使用前充電。務必使用正確之充電器並依設備之使用手冊，以正確之程序進行充電。

CAUTION

1. RISK OF EXPLOSION IF BATTERY IS REPLACED BY AN INCORRECT TYPE.
2. DISPOSE OF USED BATTERIES ACCORDING TO THE INSTRUCTIONS

To prevent possible hearing damage, do not listen at high volume levels for long periods



This page is intentionally left blank.